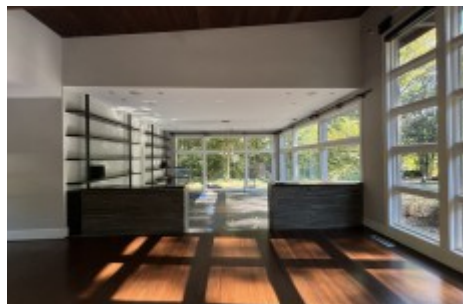


Hidden In Plain Sight - 501 Journey

501 Journey St Concord, NC 28025

35.388507678362146, -80.5744370782946



Hidden in plain sight, this mid-century gem welcomes you with floor-to-ceiling windows, redwood ceilings, refinished oak floors, and a double-sided flagstone fireplace. The gourmet kitchen features a Wolf gas range, a Sub-Zero fridge, four Fisher & Paykel dishwashers, and a dedicated ice maker. The guest wing's hallway leads to two bedrooms with en-suites and walk-in cedar closets, while the opposite wing houses the primary suite with a fireplace and dream closet. Both wings open to a Zen garden leading to a gunite, saltwater infinity pool with a covered bar, outdoor fireplace, grilling stations, and a full bath. A separate four-bay garage with shop space completes this retreat. It is set on 11+ acres with a lush wooded perimeter, manicured grounds, an irrigation system, fruit trees, and an enclosed hobby garden. Accessible via a private drive, this gated, fenced oasis awaits you.[LINK TO AGENT'S LISTING](#)

Overview

Market Status:Active	Sale or Rent:For Sale	Initial list price (subject to change):\$1849900
Rent price:\$	Land area:11.57acre	Living area:3841ft2
Bedrooms:3	Full Bathrooms:4	Half Bathrooms:1
Architect:Hoover	Builder:	Year Built:1953

Amenities

✓ Garage

✓ Pool

✓ Vaulted Ceiling

✓ Workshop

✓ Art Studio

Agent Details

tice@morticecre.com - brid1109

NC Modernist Houses For Sale/Rent