







**the approach** Follow a road through a scattering of trees, then around a bend, and the Artist's Palette sits in a wide, open sloping meadow that appears to embrace it. The house, covered in stained cedar siding that picks up the colors of the landscape, has no true front or facade, but rather has a presence from every approach.

PHOTOS COURTESY OF ANGERIO DESIGN PLLC

## ARTIST

CONTINUED FROM PAGE 1E

living in her own home near her son's previous residence. "We designed this house so that she could come live with us and still have her own living space," said Garrison.

The mother-in-law suite is different from the rest of the house stylistically, from the traditional country furniture rather than the mix of Danish modern and antiques in most of the rest of the house to the space's distinct warm, floral scent rather than the oak scent of the communal space or the cedar smell outside.

The suite has its own spacious living room, a smaller kitchen and a porch. The porch has a view of a meadow that goes on 12 acres, and offers the avid gardener a connection to gardening spaces. There's a side door entrance, giving his mother the option of going to her residence without having to interact with the rest of the house.

Back in the foyer, a turn to the right takes guests up the stairs to a loft where the couple's son retreats when home. Straight ahead, past the brick fireplace, are the light-filled living and dining spaces. At the rear of the house is the master suite alongside two workshops and a music room.

The family shares a front entry, but they can go off to their individual spaces, being as connected or disconnected as they want to be. "It allows some freedom to negotiate how much they want to be with one another," Angerio said.

Designated spaces — the entry hallway, the back wall of a fireplace, and a long wall in the living room — display artwork, most by Garrison with some paintings by his mother. Angerio said she wanted to "subtly support the artwork and not overpower it since [the house] is a gallery space as well as a living space."



## the woodwork

The custom staircase leading up to the bedroom loft shows off the precision of local woodworking crafters. The wood used is the same kind of wood used on the floor, making it feel as if the floor is moving up the stairs. The flat banister lets hands glide up the staircase.

Special attention was given to how natural light filters into the house and how it might affect the artwork, both in lighting and potential damage. Two workshops, one with double doors leading to a covered deck, were included specifically for Scott Garrison. Even with very little separation between the two rooms,

there's an amazing sense of quiet.

"I am a mixed-media painter," said Garrison. "I have larger studio needs. The covered deck is sort of an outside working space where I can pull a saw out and cut wood, sand surfaces down, and other work that can get a little messy."

Garrison, who had gotten used to working in garages or basements, said, "This is the first real studio I've ever had."

Idyllic views all around the house lend inspiration and a connection to nature. On the inside and out, the house is a work of art itself. In addition to the gallery and spatial organization, the house is filled with color — reds, yellows, sage greens and browns, with Carolina blue up in their son's room.

"We gave him a Carolina room even though the house is divided because you have Duke graduates," Angerio said.

The house employs a mixture of natural materials including warm, brown brick on the fireplace, granite countertops and maple cabinetry in the kitchen, intricate woodworking by local crafters and red oak floors throughout the house.

"The selections were done intentionally to work with the overall building of the house's palette," the architect said.

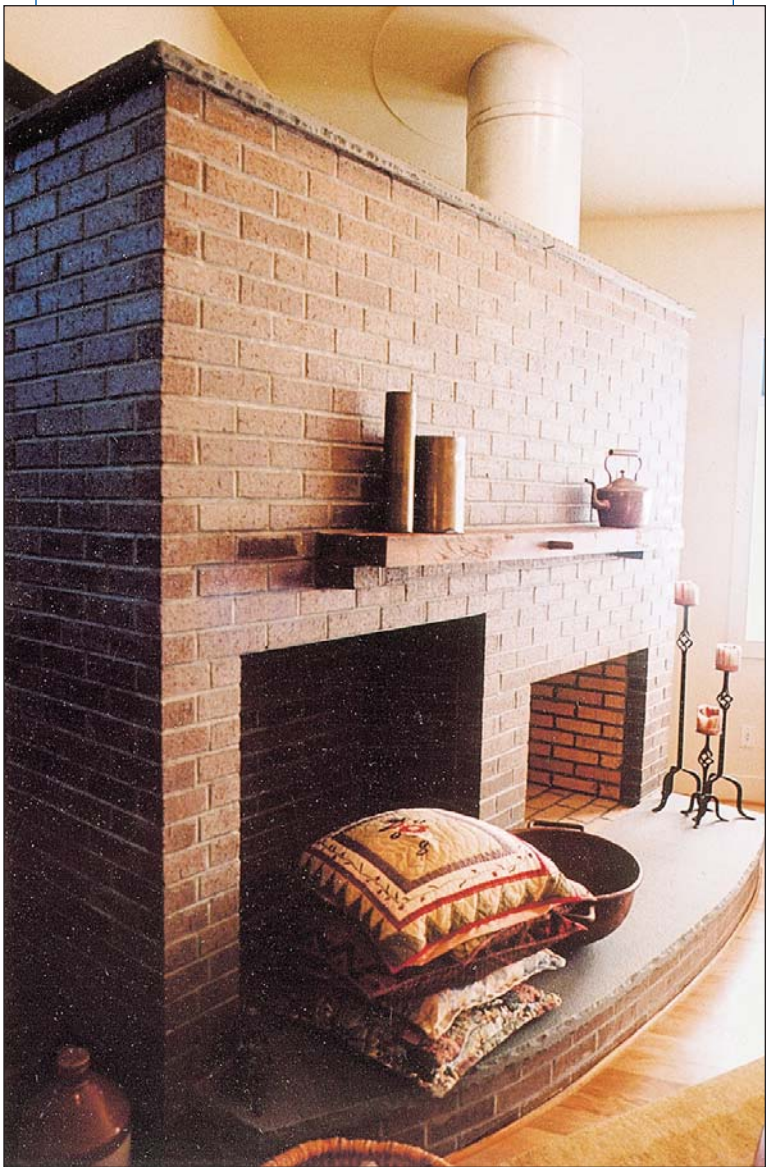
Outside, the barnlike house sits under asphalt shingles and corrugated metal roofing. The house has a simple, rustic design balanced by whimsical color, traditional forms and modern touches. Stained cedar siding picks up the colors of the landscape around the house. The siding alternates between a horizontal lap and a vertical tongue-and-groove profile.

The house is sited so that the meadow's sloping form appears to embrace it with no disruption in the landscape. The house looks like a timeless form that's been a part of the landscape forever. The house has a cedar exterior all the way around it, so it has no true front or facade — the front door is clearly marked by the tall "barn" portion of the house and the intricately crafted front doors — so guests coming around the bend up to the house discover that it has a presence from every approach. Even the glass on the large windows merges into the landscape: on the outside, a tint reflects the landscape and on the inside, the glass frames the landscape.

"The same way the interior of the house was creating all these different levels of living and different levels of intimacy with different kinds of gardening or gathering places," said Angerio, "we wanted the outside of the house to offer different kinds of activity, gardens and gathering spaces." So decks and gardens allow the nature-loving homeowners to enjoy the land in various levels.

With its layers of generational living, sensitivity to the landscape and attention to the vernacular form and light that facilitates creativity, spaces in this house are blended, much like the dabs of colors on an artist's palette.

Reach Ginger DM Krieg at  
homeandgarden@newsobserver.com.

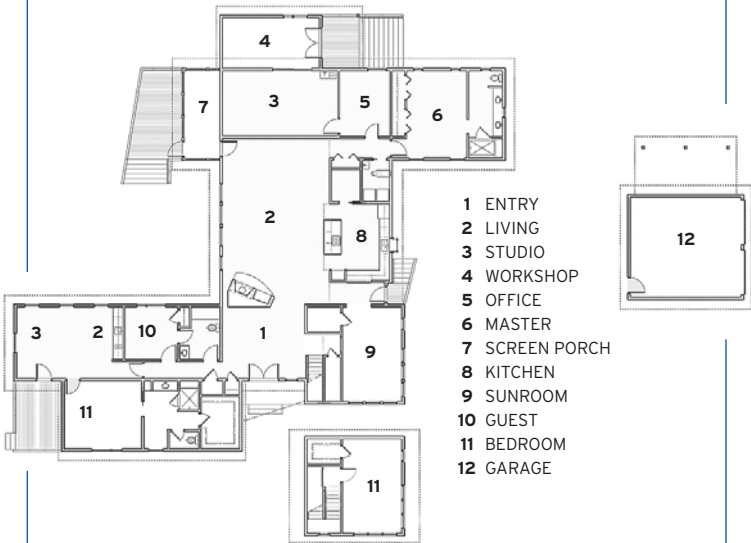


**the warmth** The brown brick fireplace deposits warmth and coziness into the heart of the house, and its back side is a display space for Garrison's art.



**side deck** A screened porch and deck is high enough off the ground for quiet moments spent gazing out onto the landscape. In an area at the foot of the steps, the family is planning a courtyard with more garden space.

**the architect's aim** "A lot of what generated the house was the generational requirements," architect Angerio said. The efforts amounted to "more contemplated, more quiet spaces at the edges, and more communal space at the heart of the house."



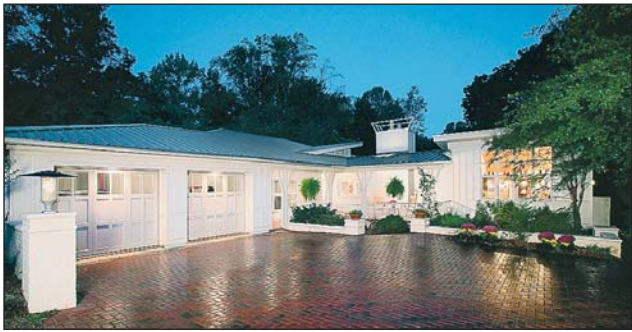
**PROJECT CREDITS**  
GENERAL CONTRACTOR: DENMARK CONSTRUCTION; PHOTOGRAPHER: ANGERIO DESIGN PLLC; STAIR: BRAD MARZEC, MARZEC STAIR BUILDING LLC; CABINETS: JOHN GAUL, "THE CABINET MAN"



# home of the month

Which design would you like to learn more about?

You've seen the panel's choices, now it's your turn. Here are the entries that did not make the final cut. Vote for the one you're most interested in and we'll take you through the house that gets the most votes. Send your votes to Home & Garden at 215 S. McDowell St., Raleigh 27601, or e-mail [homeandgarden@newsobserver.com](mailto:homeandgarden@newsobserver.com). (Specify "Home of the Month" in the subject field.) Deadline is Dec. 2. For a better look at these houses, or to read about the designs we've profiled so far, go to [www.newsobserver.com](http://www.newsobserver.com) key word: **architectural**.



**a** Davis Residence  
Jeffrey T. Davis, Jdavis Architects



**c** Doyle Residence  
Karl R. Mrozek, AIA



**e** May Residence  
Ian A. Johnston, Johnston Architecture, LLP, AIA



**g** Store/House  
John Reese, Clearscapes PA



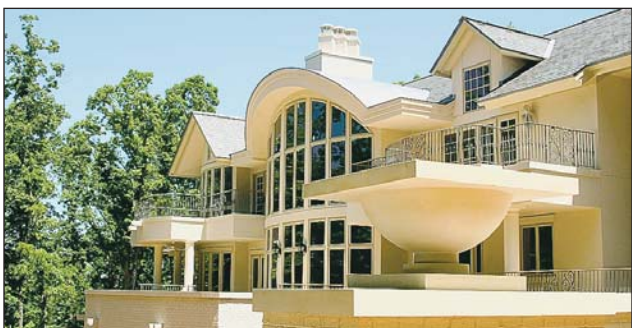
**i** Churchill  
Perry Cox, Perry Cox Architect, PA



**k** Renovations to Sipe Residence  
Rebecca T. Kalsbeek, Rare Designs



**m** The Bailey  
Maurer Architecture



**o** Henningsen Residence  
Sterling Stevens, Strahan Associates PA



**b** Edwards Residence  
Eugene Wilson Brown, AIA



**d** Hirst Residence  
Tony Hirst, AIA



**f** Sagasti Residence  
Leo Sagasti



**h** Painter Residence  
Sterling Stevens, Strahan Associates PC



**j** Renovation of the Purcell House  
Dawn Blobaum, Blobaum/Bartl



**l** Hilltop Views  
William J. Hirsch Jr. Inc



**n** English Country Cottage  
William J. Hirsch Jr. Inc



**p** Craftsman Contemporary  
William J. Hirsch Jr. Inc

**"DARING AND MOVING FILMMAKING. A MUST-SEE FOR PEOPLE WHO CARE ABOUT ADVENTUROUS CINEMA."**  
— Peter Hirsch, PREMIERE MAGAZINE

**"AN EPIC MINDBLOWER. BREATHTAKING. AN EMOTIONAL POWERHOUSE."**  
— Stephen Lee, PLAYBOY MAGAZINE

**THE FOUNTAIN**  
WHAT IF YOU COULD LIVE FOREVER?  
**2006**

**PG-13**

[thefountainmovie.com](http://thefountainmovie.com)

MOBILE USERS: Free Showtimes - Text FOUNTAIN with Your ZIP CODE to 43KIX (435491)

<b>Regal Cinemas</b> <b>BRIER CREEK STADIUM 14</b> 1-540 & US Hwy 70 800/FANDANGO #1302	<b>Regal Cinemas</b> <b>NORTH HILLS MOVIES 14</b> 1-440 w/ SR, Sh. Forks Rd 800/FANDANGO #1306
<b>Carmike Cinemas</b> <b>CARRIAGE 16</b> 3501 Atlantic Springs Rd 919/455-1111	<b>Carmike Cinemas</b> <b>PARK PLACE 16</b> 18 9520 Chapel Hill Rd 919/455-1111
<b>Consolidated</b> <b>CROSSROADS 20</b> 1-40 & US 1 919/476-FILM	<b>Consolidated</b> <b>RALEIGH GRAND</b> Lynn Road & Hwy 70 919/476-FILM
<b>Morgue Cinemas</b> <b>MARKET CINEMAS 12</b> 10900 Cameron Oaks Dr 919/453-2746	<b>Consolidated</b> <b>SOUTHPOINT</b> CINEMA 16 8520 Randleman Pkwy 919/476-FILM

SPECIAL ENGAGEMENTS NO PASSES OR SEQUENTIAL SEATING ACCEPTED  
CHECK THEATRE DIRECTORIES OR CALL FOR SEATING INFORMATION AND SHOWTIMES

**Wanna Dance?**

*Moon & Stars Dance Band*  
Sat. night

**THE IRREGARDLESS**  
C A F E

Raleigh 833-8898  
[Irregardless.com](http://Irregardless.com)

**"A Great Movie! Every family in America should see it!"**  
— Dan Reeves, NFL Coaching Great

**FACING THE GIANTS**

**PG**

[www.FacingTheGiants.com](http://www.FacingTheGiants.com)

**Now Playing**  
Call for Showtimes

**CARMIKE FIFTEEN**  
5501 Atlantic Springs Road (919) 878-8977

**ICE SKATING**

**FACTORY ICE HOUSE**  
S. Main Street • Wake Forest 453-1500

**GARNER ICE HOUSE**  
New Rand Road • Garner 861-7465

**CARY ICE HOUSE**  
Buck Jones Road • Cary 460-2756

**For Public Skating Hours:**  
[WWW.ICEHOUSERINKS.COM](http://WWW.ICEHOUSERINKS.COM)

**"A HIGH-OCTANE-ACTION SUSPENSE THRILLER!"**  
PETE HAMMOND, MAXIM

**"AN EDGE-OF-YOUR-SEAT THRILL RIDE!"**  
GUY FARRIS, ABC-TV/SACRAMENTO

**"'DÉJÀ VU' IS EXCITING, THRILLING AND FULL OF SURPRISES!"**  
BRYAN ERDY, NBC-TV/COLUMBUS

**DENZEL WASHINGTON**  
**DÉJÀ VU**

**PG-13** [DejaVu.movies.com](http://DejaVu.movies.com)

MOBILE USERS: Free Showtimes - Text DEJAVU With Your ZIP CODE to 43KIX (435491)

<b>CARMIKE 15</b> 2501 Fenton Dr. 855-0111	<b>Consolidated</b> <b>CROSSROADS 20</b> 1-40 & US 1 919-476-FILM (3456)	<b>Consolidated</b> <b>RALEIGH GRAND</b> Lynn Rd. & Hwy. 70 919-476-FILM (3456)	<b>Consolidated</b> <b>SOUTHPOINT CINEMA 16</b> 8520 Randleman Pkwy 919-476-FILM (3456)
<b>United Artists</b> <b>GARNER TOWNE SQ.</b> 1450 Timber Dr. 272-2212	<b>PHOENIX 10</b> ON THE PLAZA @ NORTHGATE 1-40 & US Hwy 70 288-1001 • Durham	<b>Regal Cinemas</b> <b>BRIER CREEK STADIUM 16</b> 1-40 & US Hwy 70 800-FANDANGO #1302	<b>Regal Cinemas</b> <b>NORTH HILLS STADIUM 14</b> 1-440 w/ SR, Sh. Forks Rd 800-FANDANGO #1306

SORRY, NO PASSES

Goodnight's Comedy Club Invites You to  
**See Great Comedy, Live On Stage!**

This Weekend: Nov. 24-26:  
**White Collar Comedy Tour**  
Three nationally touring headliners bring you a clean show and prove funny doesn't have to be blue!  
Rated PG

Next Weekend: Nov. 30-Dec. 2  
**Christopher Titus**  
From his own hit television show, 'Titus,' also seen on The Tonight Show with Jay Leno, Comedy Central's Premium Blend, and CBS's Yes Dear  
Rated R

Call 828-5233 (LAFF) or visit [goodnightcomedy.com](http://goodnightcomedy.com) for information and reservations.

**THE GRILLE**  
AT GOODNIGHT'S

[www.VisitBooneNC.com](http://www.VisitBooneNC.com)  
**1-800-699-5097**  
[info@VisitBooneNC.com](mailto:info@VisitBooneNC.com)

**BOO!**  
GREAT SURPRISES

PHOTOS COURTESY OF MARC LAMKIN PHOTOGRAPHY, EUGENE WILSON BROWN, SETH TICE-LEWIS, SUSAN HIRST, TIM BUCHMAN, MIRIAM SAGASTI, JAY MANGUM PHOTOGRAPHY, STAN FOWLER, BLOBAUM/BARTL, REBECCA TALTON KALSBECK, WILLIAM J. HIRSCH JR., MAURER ARCHITECTURE, STERLING E. STEVENS