

SCHOOLS OF INTEREST 5

DIVISION OF SCHOOL PLANNING
NORTH CAROLINA DEPARTMENT OF PUBLIC INSTRUCTION

FOREWORD

In the State of North Carolina, the statutory responsibility for operating the local public schools is delegated to county and city boards of education. A board of education is a policy-making body and has the legal responsibility and authority for entering into contracts for the design and construction of local public school system buildings.

Charged with this responsibility, a conscientious school board, as well as a successful superintendent, keeps abreast of recent developments and trends in public education, utilizes every source of professional information, and plans continuously for the improvement of the educational program. Along with the highest quality of educational decision-making, the alert school board secures the best design talent available.

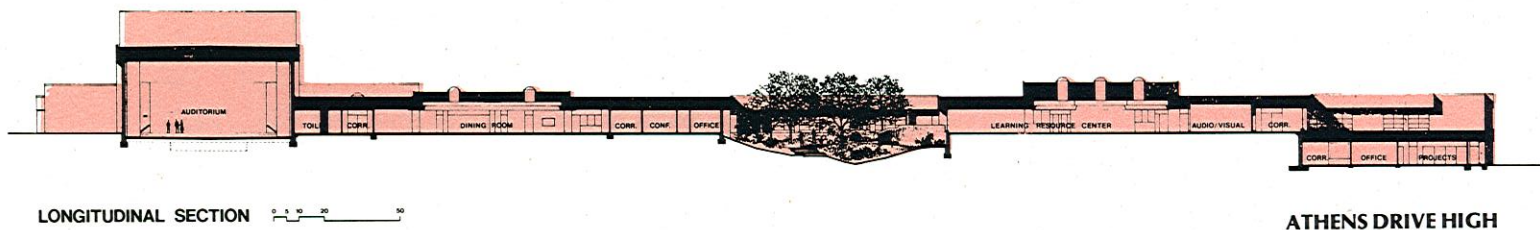
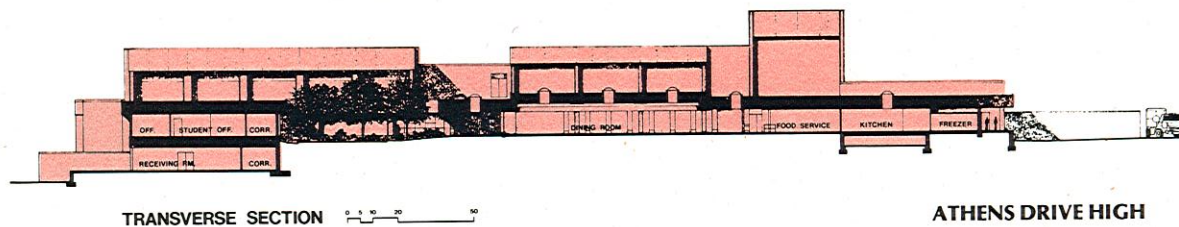
Effective and intelligent planning and design does not occur accidentally but through a thoughtfully-prepared process that is sensitive to local conditions. This publication presents several projects which reflect that process. The process usually includes preparation of educational specifications, analysis of educational specifications, development of a design program, design program schematic plans, plan development, and evaluation and review of plans. This process provides a framework for systematic, purposeful planning and permits the flexibility necessary for adaptation to local need or special conditions.

We commend this publication to your attention. Along with the four previous issues of SCHOOLS OF INTEREST beginning June, 1971, by the Division of School Planning, it can serve as the basis for an effective and imaginative school planning program to strengthen and improve building programs. The Staff of the Department of Public Instruction is available for consultation and assistance in any aspect of the planning process.



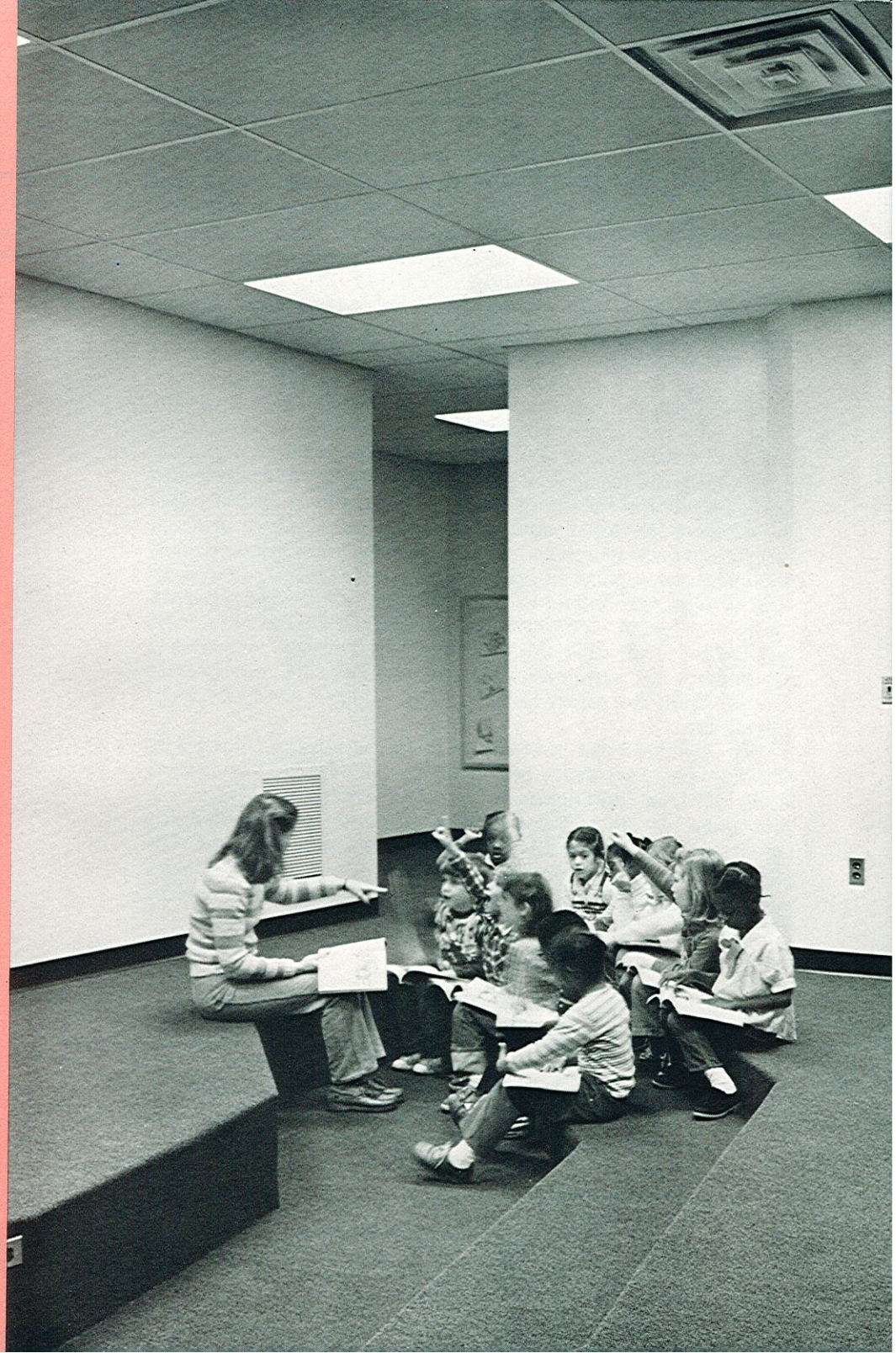
A. Craig Phillips, State Superintendent
N.C. Department of Public Instruction

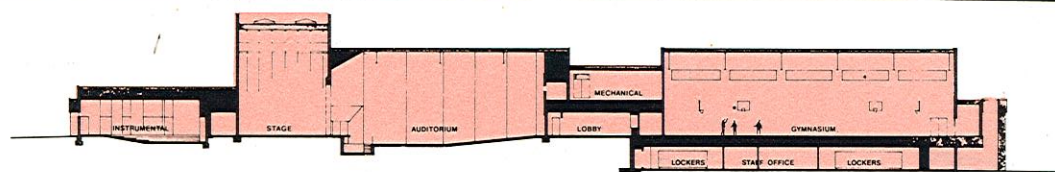
June, 1981



5

GARDNERS ELEMENTARY





ATHENS DRIVE HIGH

TRANSVERSE SECTION 0 10 20 50

We are pleased to present several examples of floor plans for buildings constructed during the last three years. Selecting just a few schools for this publication from among the many notable designs constructed in North Carolina is difficult. There are others which are worthy of presentation each time we prepare an issue of *SCHOOLS OF INTEREST*. Almost all administrative districts have a new school or an addition to an older school which is of particular educational or architectural interest. Quality professional planning and design services are readily available to all school boards.

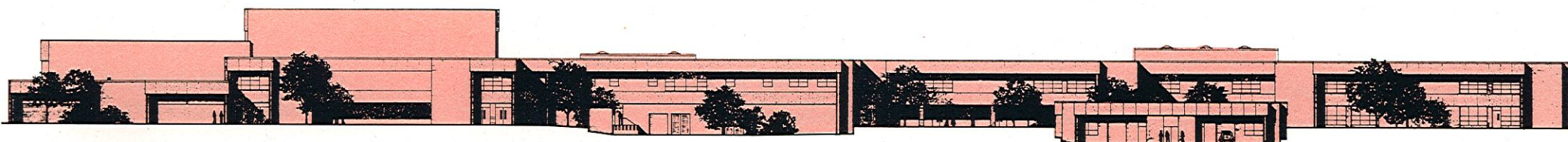
The schools presented here represent a wide range of educational philosophies and design solutions. These preferences and objectives blend with the capabilities of local design services and educational objectives to produce more variety than is ordinarily believed to be the case. Each community may express its own individuality and educational preference. The public school planning process is remarkably responsive in this respect.

The process of public school programming, planning, and design has matured during the period of the 1973 Public School Facilities Fund. Plan relationships can be a matter of choice as well as tradition. Special program facilities are included or anticipated wherever local educational preferences dictate. Room sizes, arrangements, and relationships, can and do vary as much as the perceptions of educators, architects, and school boards. The latest educational or architectural trends are usually reflected in a new school building somewhere. Also, many school facility design efforts have provided experience and information which are useful when applied to other building types. This variety of building design solutions is illustrative of the democratic complexity and evolutionary responsiveness of public education.

Lacy M. Presnell, Jr.

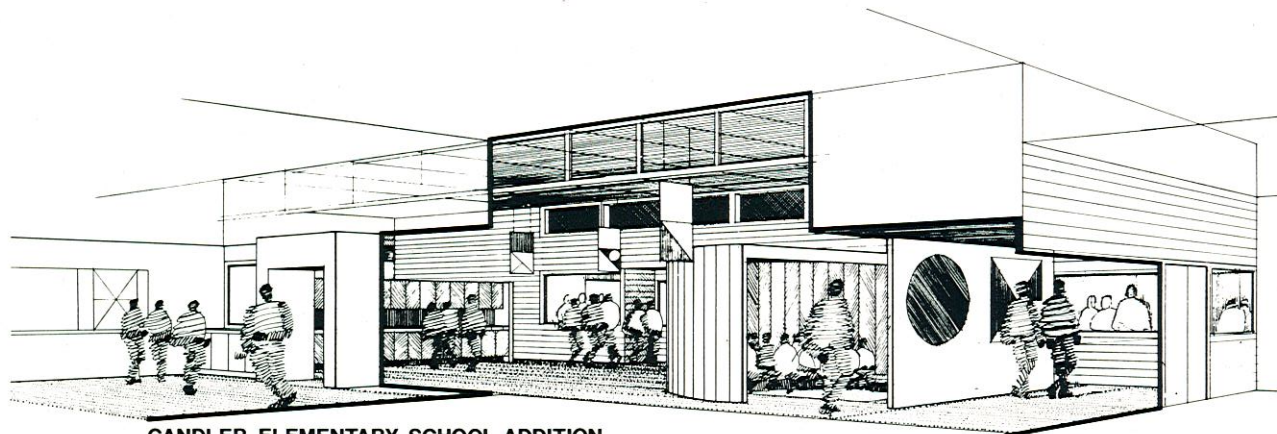
Lacy M. Presnell, Jr., Director
Division of School Planning
N.C. Department of Public Instruction

June, 1981



SOUTH ELEVATION 0 10 20 50

ATHENS DRIVE HIGH



CANDLER ELEMENTARY SCHOOL ADDITION

ADMINISTRATIVE UNIT	SCHOOL	CAPACITY
New Elementary Schools, 1977-80		
Buncombe County	Swannanoa	800
Buncombe County	Valley Springs	1,218
Cumberland County	District 1	624
Cumberland County	District 3	624
Davidson County	Southwood	950
Duplin County	Kenansville	410
Winston-Salem/Forsyth	Clemmons	812
Winston-Salem/Forsyth	Old Richmond	611
Guilford County	Southwest	500
Jackson County	Smoky Mountain	500
Jones County	Maysville	281
Randolph County	Ramseur	738
Robeson County	East Robeson	564
Robeson County	Pembroke	1,084
Rutherford County	Harris	750
Stokes County	King Intermediate	639
Wayne County	Spring Creek	716

New Middle Schools, 1977-80

Brunswick County	Shallotte	1,100
Brunswick County	South Brunswick	670
Cabarrus County	Northwest Cabarrus	800
Kannapolis	Kannapolis	1,050
Carteret County	Beaufort	510
Carteret County	Morehead Central	600
Lumberton	Lumberton	1,260

New Junior High Schools, 1977-80

Davie County	North	830
Davie County	South	830
Person County	Northern	930
Reidsville	Reidsville	830

New High Schools, 1977-80

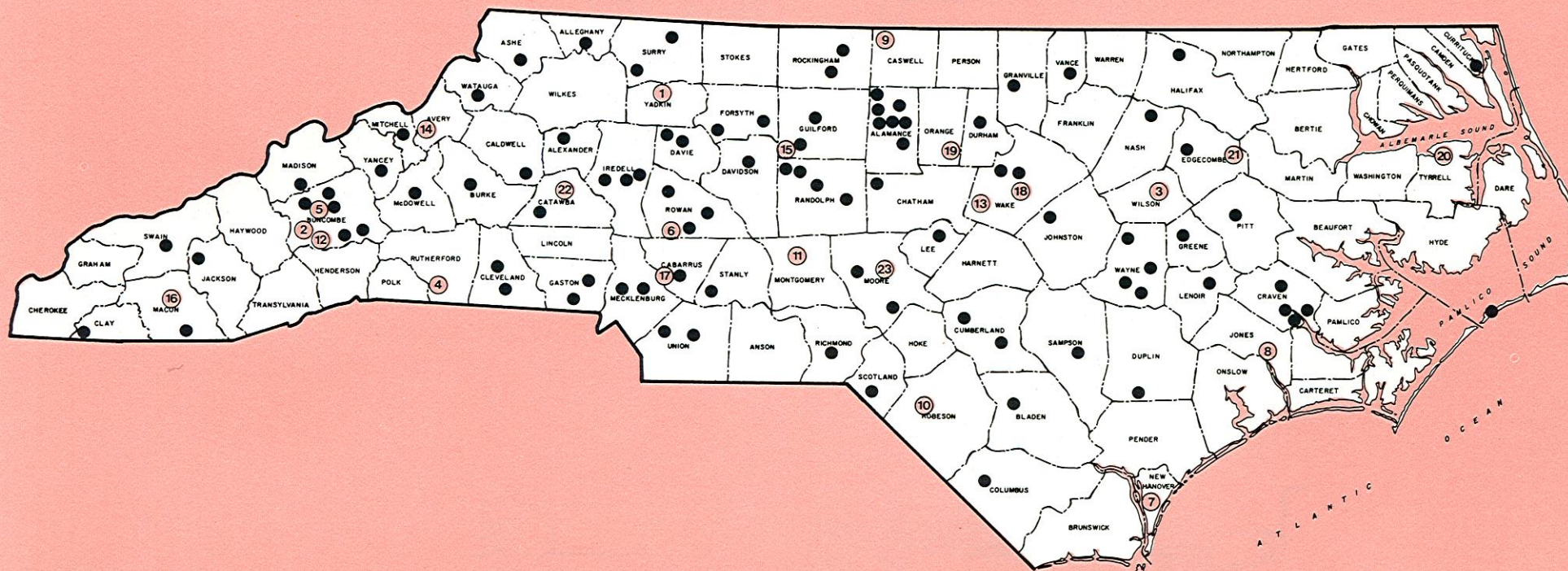
Guilford County	Southwest	1,000
Halifax County	Southeast	800
Warren County	Warren	888
Wilkes County	Central	950

1 BOONVILLE ELEMENTARY
 2 CANDLER ELEMENTARY
 3 GARDNERS ELEMENTARY
 4 HARRIS ELEMENTARY
 5 IRA B. JONES ELEMENTARY
 6 LANDIS ELEMENTARY
 7 MARY C. WILLIAMS ELEMENTARY
 8 MAYSVILLE ELEMENTARY
 9 PELHAM ELEMENTARY
 10 PEMBROKE ELEMENTARY
 11 TROY ELEMENTARY
 12 WILLIAM ESTES ELEMENTARY

YADKIN COUNTY
 BUNCOMBE COUNTY
 WILSON COUNTY
 RUTHERFORD COUNTY
 ASHEVILLE
 ROWAN COUNTY
 NEW HANOVER COUNTY
 JONES COUNTY
 CASWELL COUNTY
 ROBESON COUNTY
 MONTGOMERY COUNTY
 BUNCOMBE COUNTY

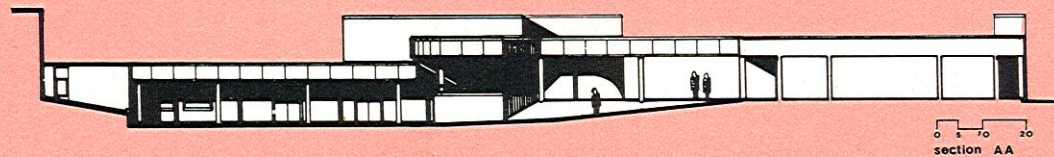
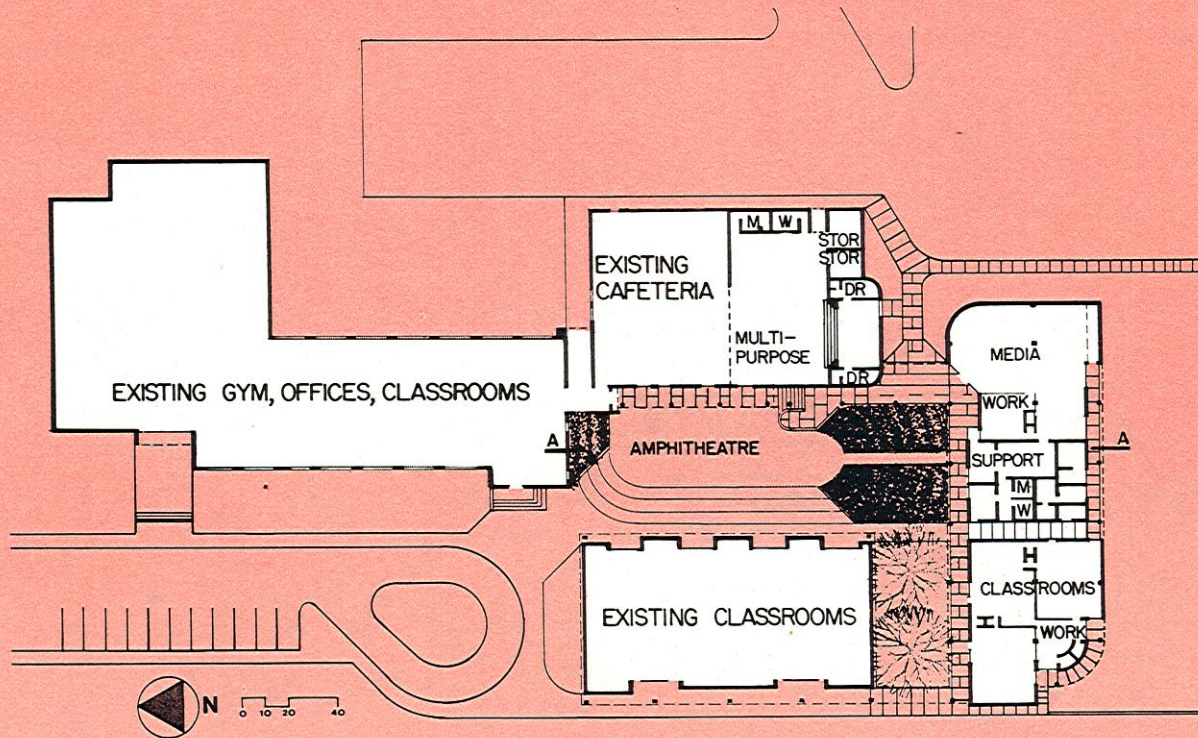
13 APEX MIDDLE
 14 CROSSNORE-NEWLAND MIDDLE
 15 FERNDALE JUNIOR HIGH
 16 MACON MIDDLE
 17 WEST CABARRUS MIDDLE
 18 ATHENS DRIVE HIGH
 19 CHAPEL HILL HIGH
 20 COLUMBIA HIGH
 21 TARBORO HIGH
 22 CONOVER SCHOOL
 23 SOUTH CENTRAL REGIONAL
 EDUCATION CENTER

WAKE COUNTY
 AVERY COUNTY
 HIGH POINT
 MACON COUNTY
 CABARRUS COUNTY
 WAKE COUNTY
 CHAPEL HILL
 TYRRELL COUNTY
 TARBORO
 NEWTON-CONOVER
 MOORE COUNTY



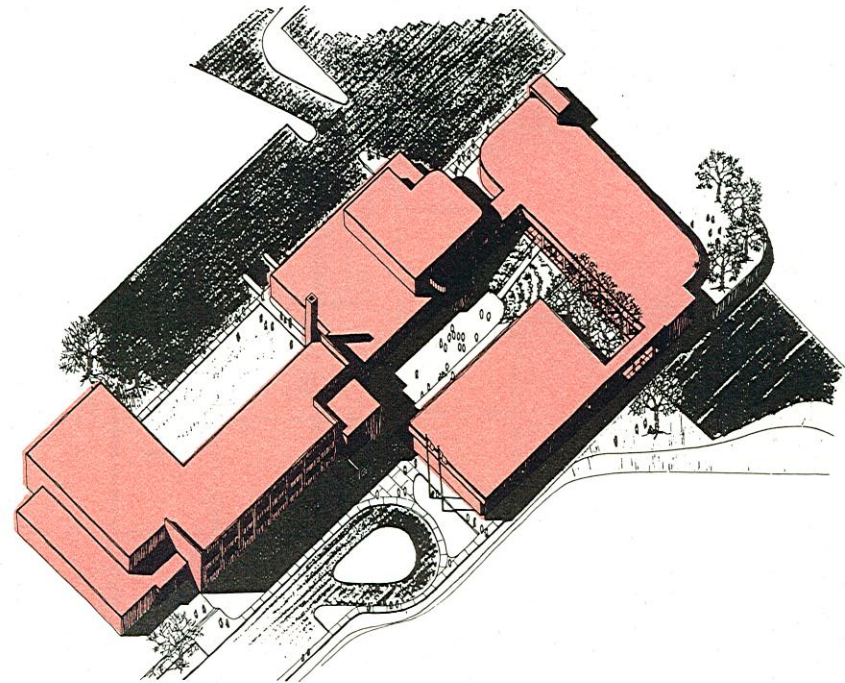
● PREVIOUS SCHOOLS OF INTEREST

1 BOONVILLE ELEMENTARY

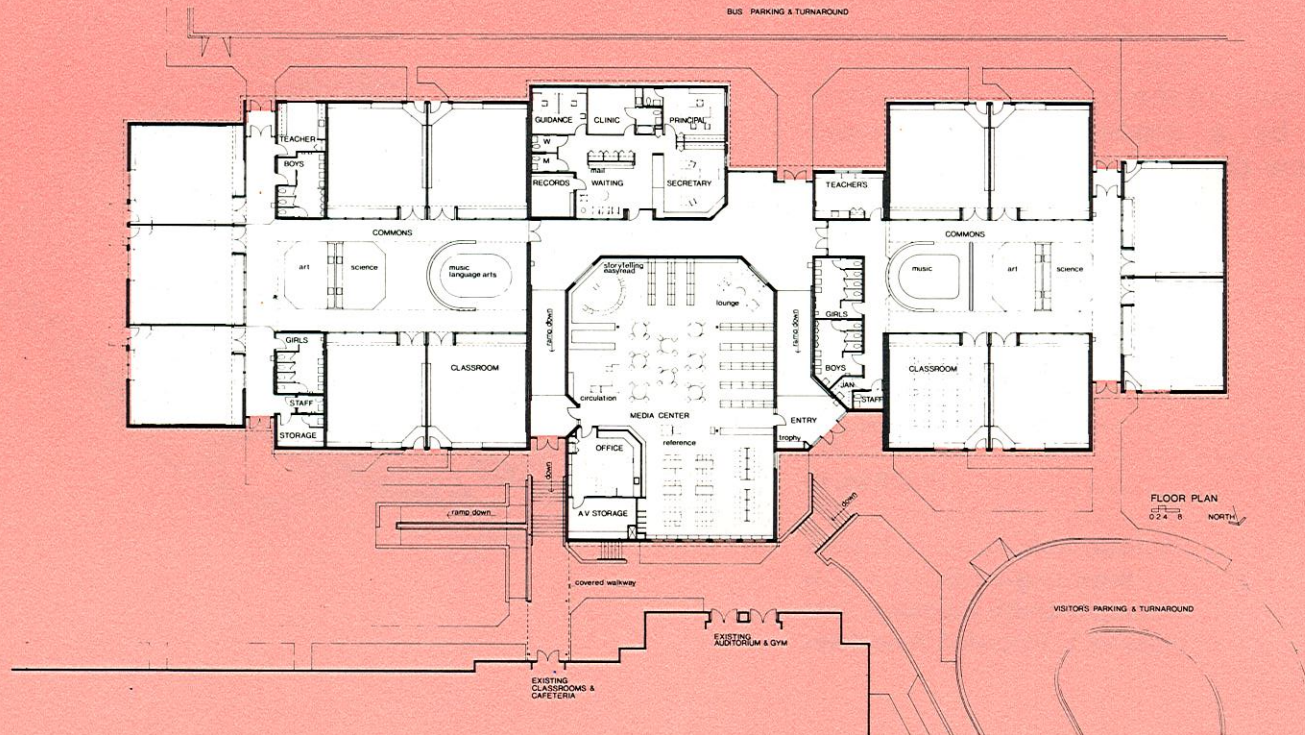
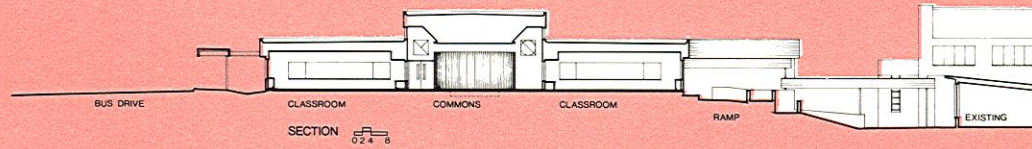


A school formerly having several substandard buildings dating to 1917 and a site divided by through drives has been transformed into a modern facility. Skillful landscape design has made this a successful project. The area between retained buildings and new construction is now the focus of the campus. In addition to functioning as a multi-purpose outdoor area, it also draws attention away from the age difference of the buildings. Specialized spaces required by a modern program were provided in the new construction.

Administrative Unit	Yadkin County
Superintendent	Paul E. Welborn
Grade Organization	K-8
Approximate Capacity	472
Square Footage	15,000 sq. ft.
Opening Date	September, 1977
Architects	Bonson Hobson & J. H. Benton
Structural Engineers	Browning-Smith Associates
Mechanical Engineers	McKnight-Smith Engineers, Inc.
Electrical Engineers	Stephen T. Hocsak & Associates



2 CANDLER ELEMENTARY



Administrative Unit Buncombe County
Superintendent N. A. Miller
Grade Organization 2-5
Approximate Capacity 367
Square Footage 30,000 sq. ft.
Opening Date August, 1979
Architects Moore Associates
Structural Engineers Sutton & Kennerly
Mechanical and Electrical ... Reece, Noland & McElrath, Inc.

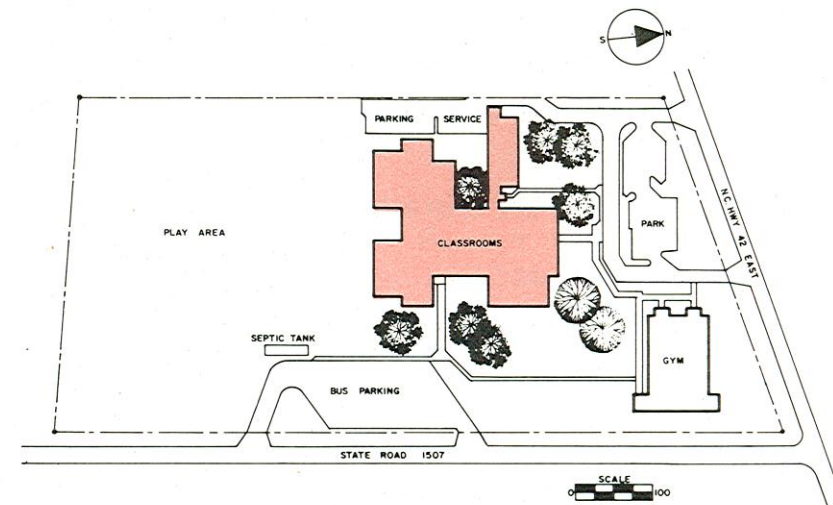
Existing buildings are characteristic of 1950's double-loaded corridor schools. The addition extends school planning tradition by using spacious central corridor commons areas around which are grouped the customary self-contained classrooms. The photograph shows one of the commons areas. Central clerestory daylight illumination is shared by adjacent classrooms by means of partial window walls which face corridors. The new library is located conveniently to new and existing classrooms. Site elevation changes are accommodated by means of exterior and interior ramps.



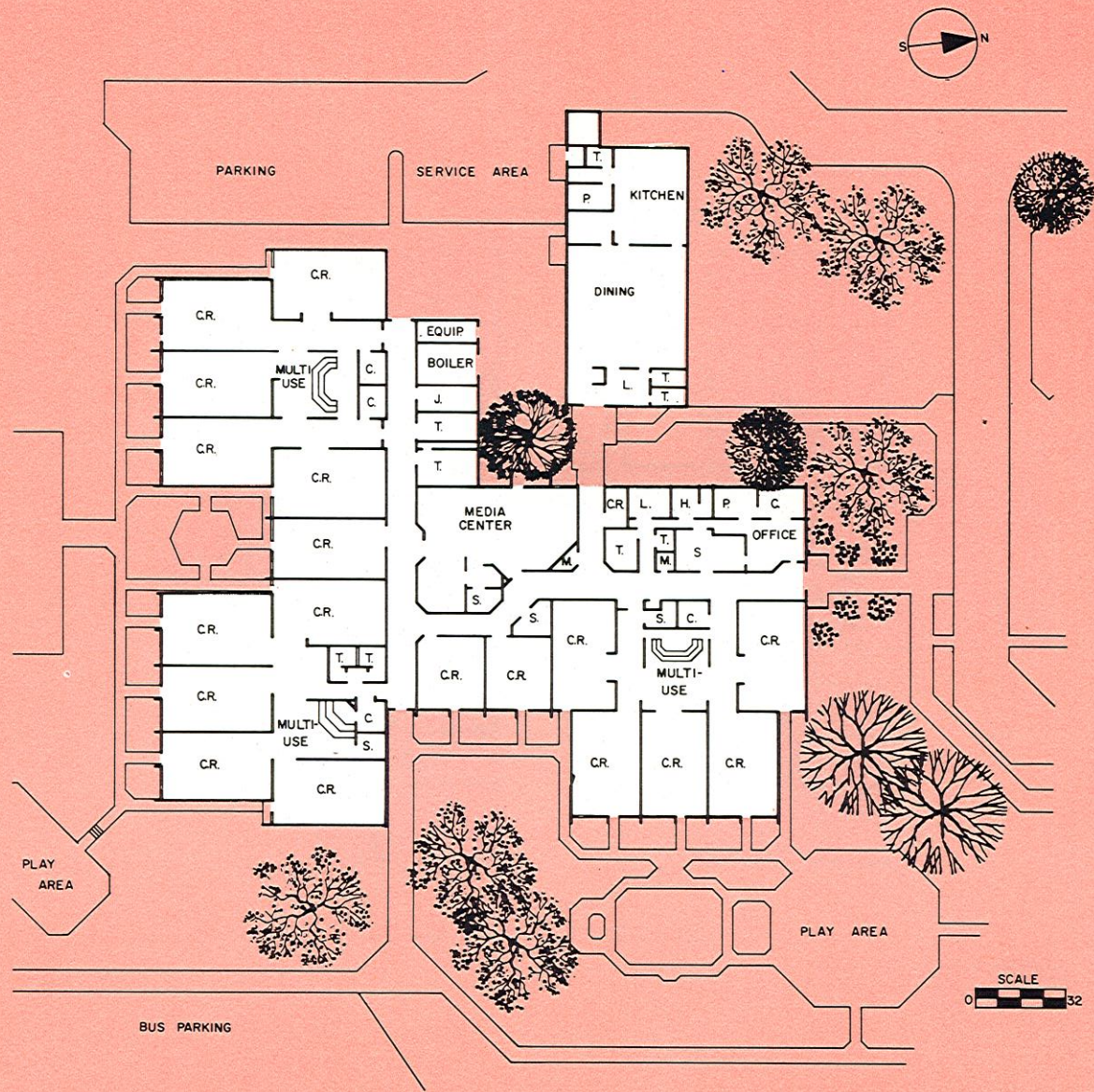
3 GARDNERS ELEMENTARY



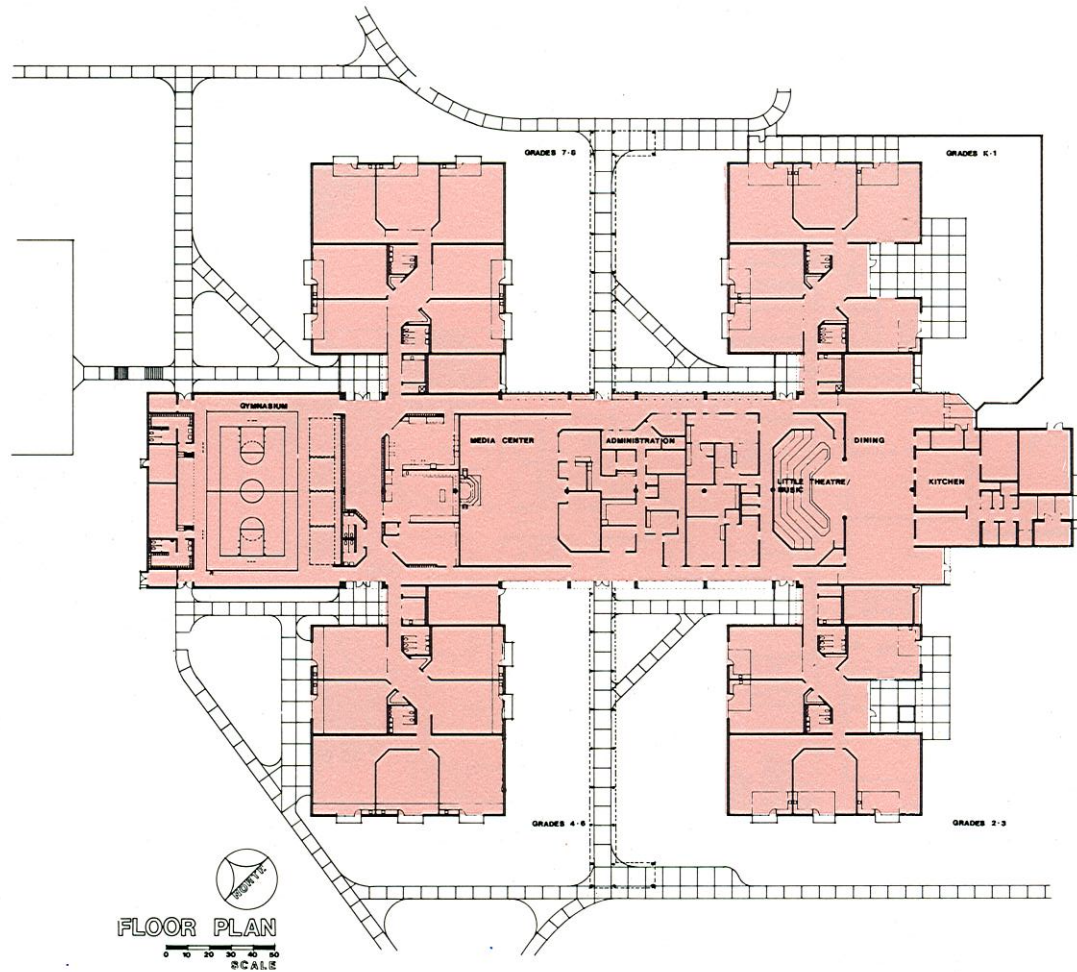
An old school site with only a gymnasium suitable for retention has been transformed into an attractive modern facility. One of the important features of this project is the carefully preserved trees. Large deciduous trees not only provide a completed landscape design, but also contribute to the energy efficiency of the building. Probably the most important feature of this plan is that there are no interior classrooms. Even the centrally located media center has a view to the outside. Thoughtful designers and school administrators do not confine students in windowless classrooms for the entire school day.



Administrative Unit	Wilson County
Superintendent	W. O. Fields, Jr.
Grade Organization	K-5
Approximate Capacity	400
Square Footage	32,000 sq. ft.
Opening Date	August, 1979
Architects	Skinner-Lamm
Structural Engineers	W. H. Gardner, Jr. & Associates
Mechanical and Electrical Engineers ...	Fenner & Proffitt, Inc.

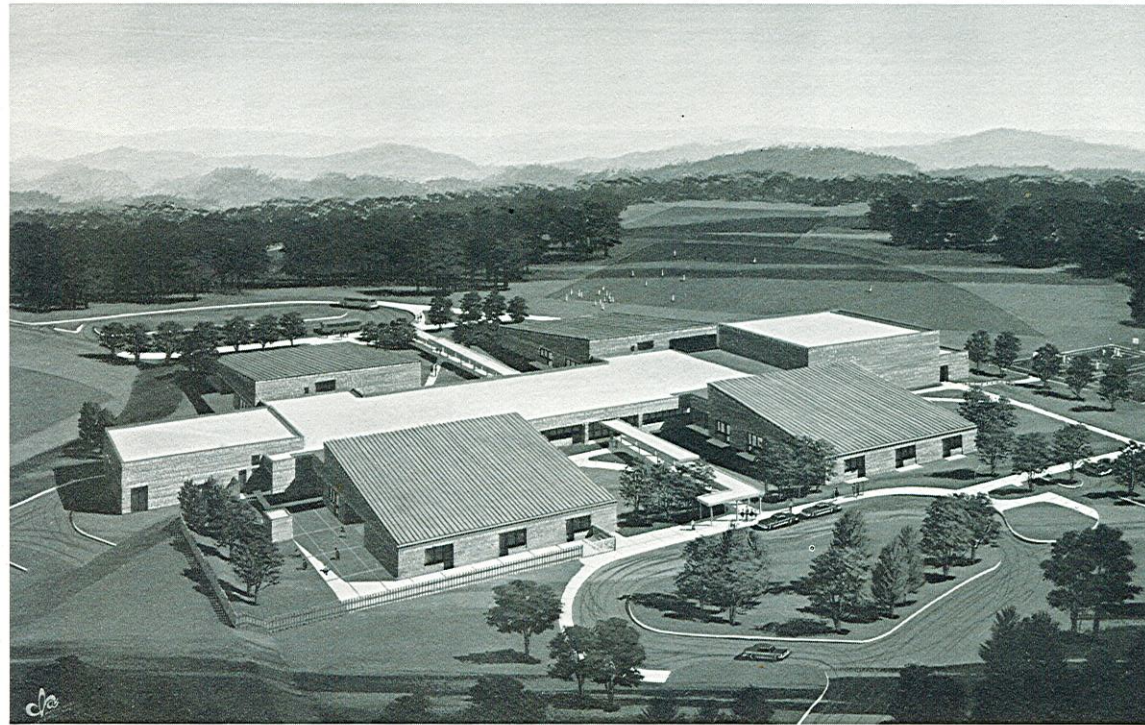


4 HARRIS ELEMENTARY

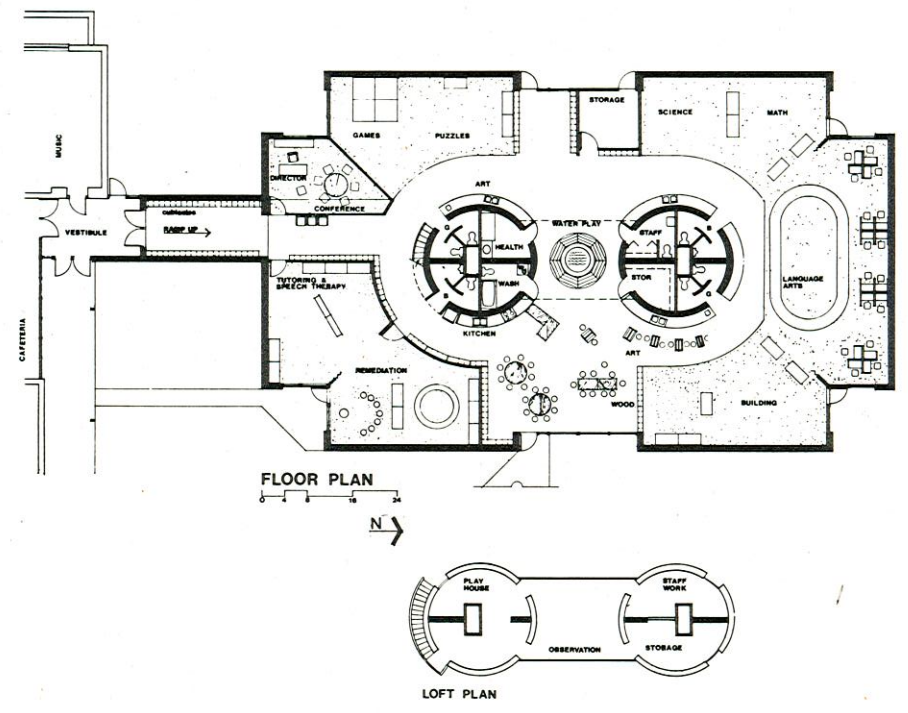
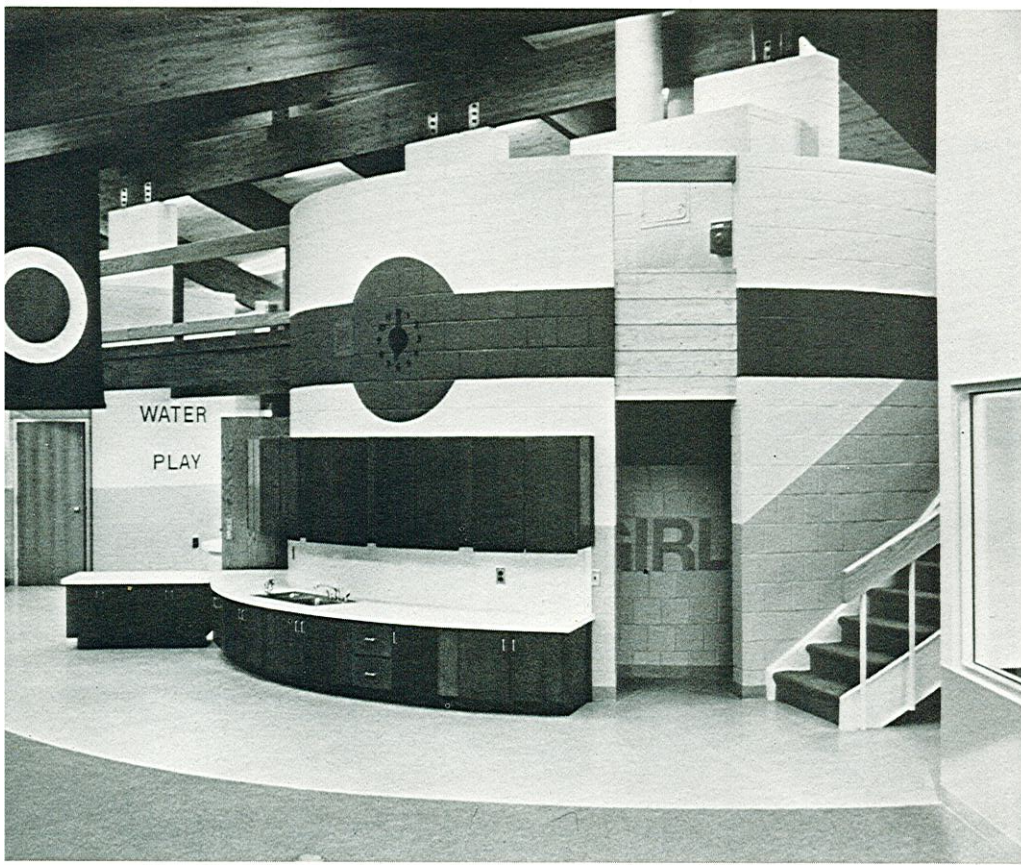


Administrative Unit Rutherford County
Superintendent Douglas L. Pearson
Grade Organization K-8
Approximate Capacity 750
Square Footage 75,000 sq. ft.
Opening Date April, 1981
Architects Padgett & Freeman
Structural Engineers Sutton & Kennerly
Mechanical Engineers Mechanical Engineers, Inc.
Electrical Engineers Bullard Associates

Classroom clusters attached to a central core of supporting activities could be the pattern for planning all types of schools, one that adapts to many site conditions. The cluster and core plan allows for growth and individualization of each educational program area. Floor level and ceiling height changes can be accommodated where necessary or as architecturally appropriate. The kindergarten through eighth grade organization in this school made possible the inclusion of a regular gymnasium and a little theater.

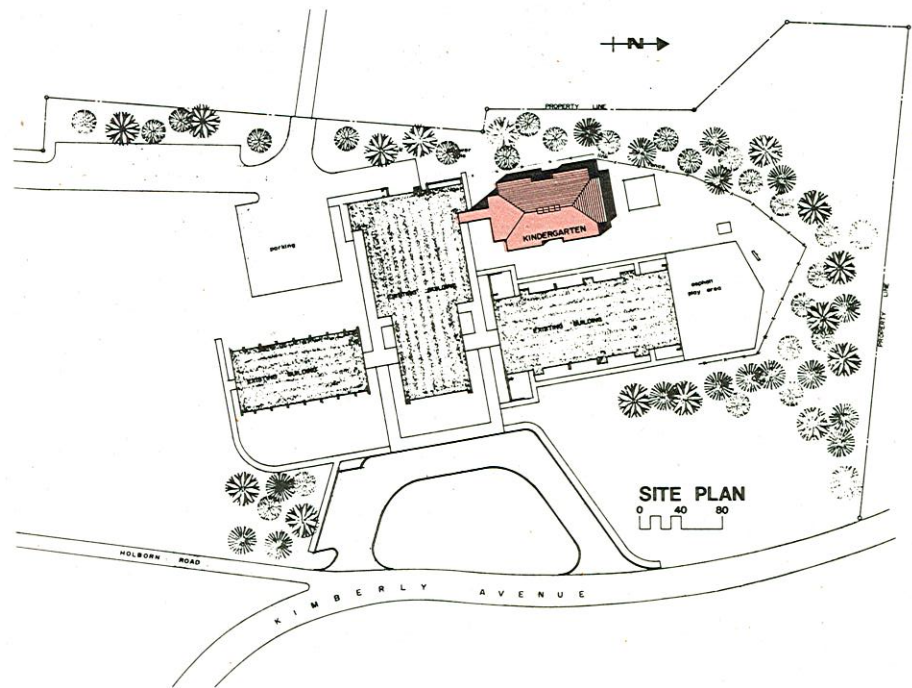


5 IRA B. JONES ELEMENTARY

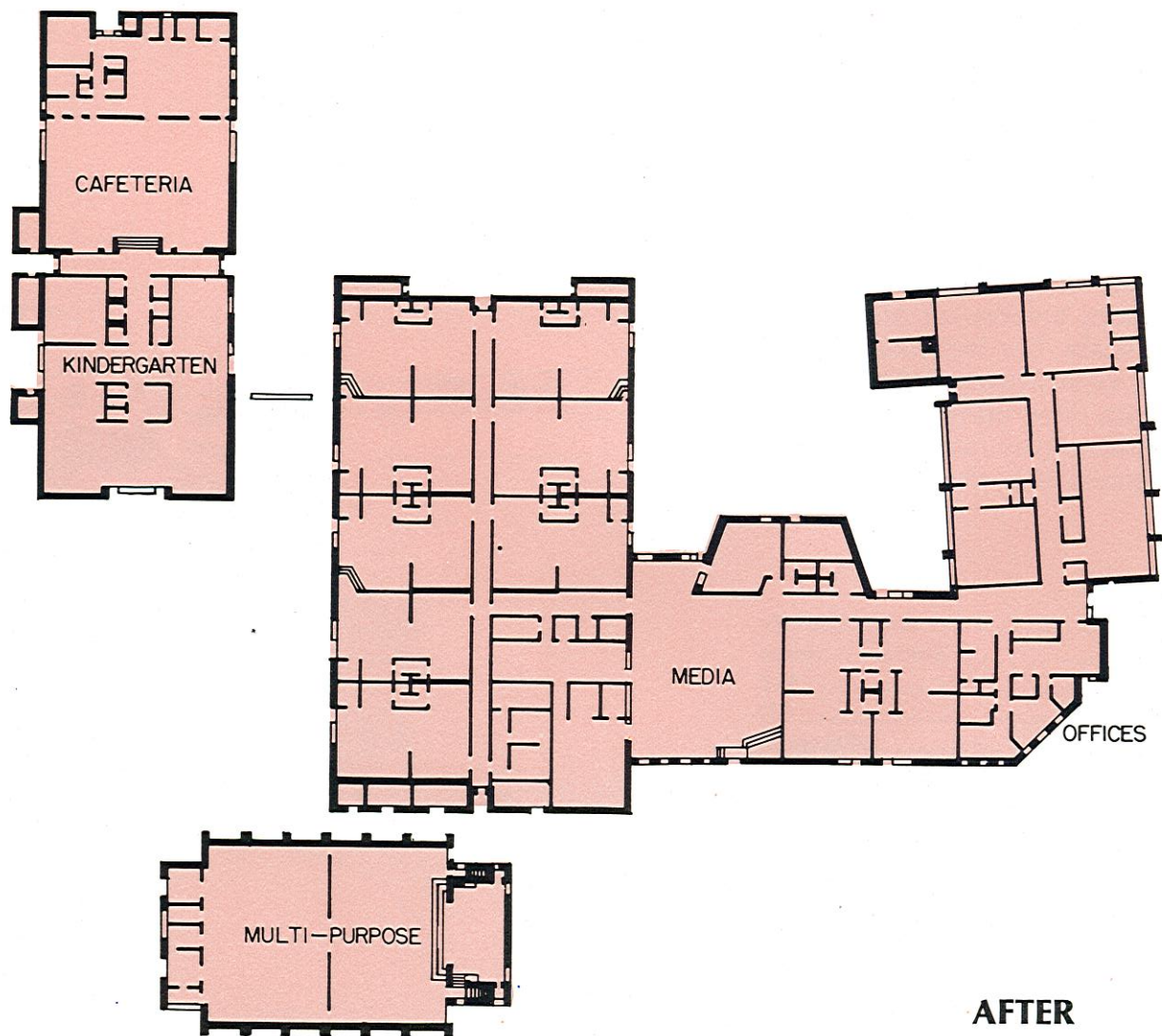


Kindergartens always offer an opportunity to create an extraordinary environment for children. The architects met the challenge and excelled in this project. This building demonstrates the idea of children needing a school space that has visual variety, complimentary color decoration, a sense of place, and appropriate architectural scale. The laminated wood beams and wood decking contribute a great deal to the success of the project. The bilevel kiosks are strong space dividers. Kindergarten facilities need to be happy places. Ira B. Jones is a model of such a place.

Administrative Unit Asheville City
 Superintendent Donald D. Jones
 Grade Organization K-5
 Approximate Capacity of Addition 120
 Square Footage 7,400 sq. ft.
 Opening Date January, 1976
 Architects Moore Associates
 Structural Engineers Sutton & Kennerly
 Mechanical and
 Electrical Engineers Reece, Noland & McElrath, Inc.



6 LANDIS ELEMENTARY



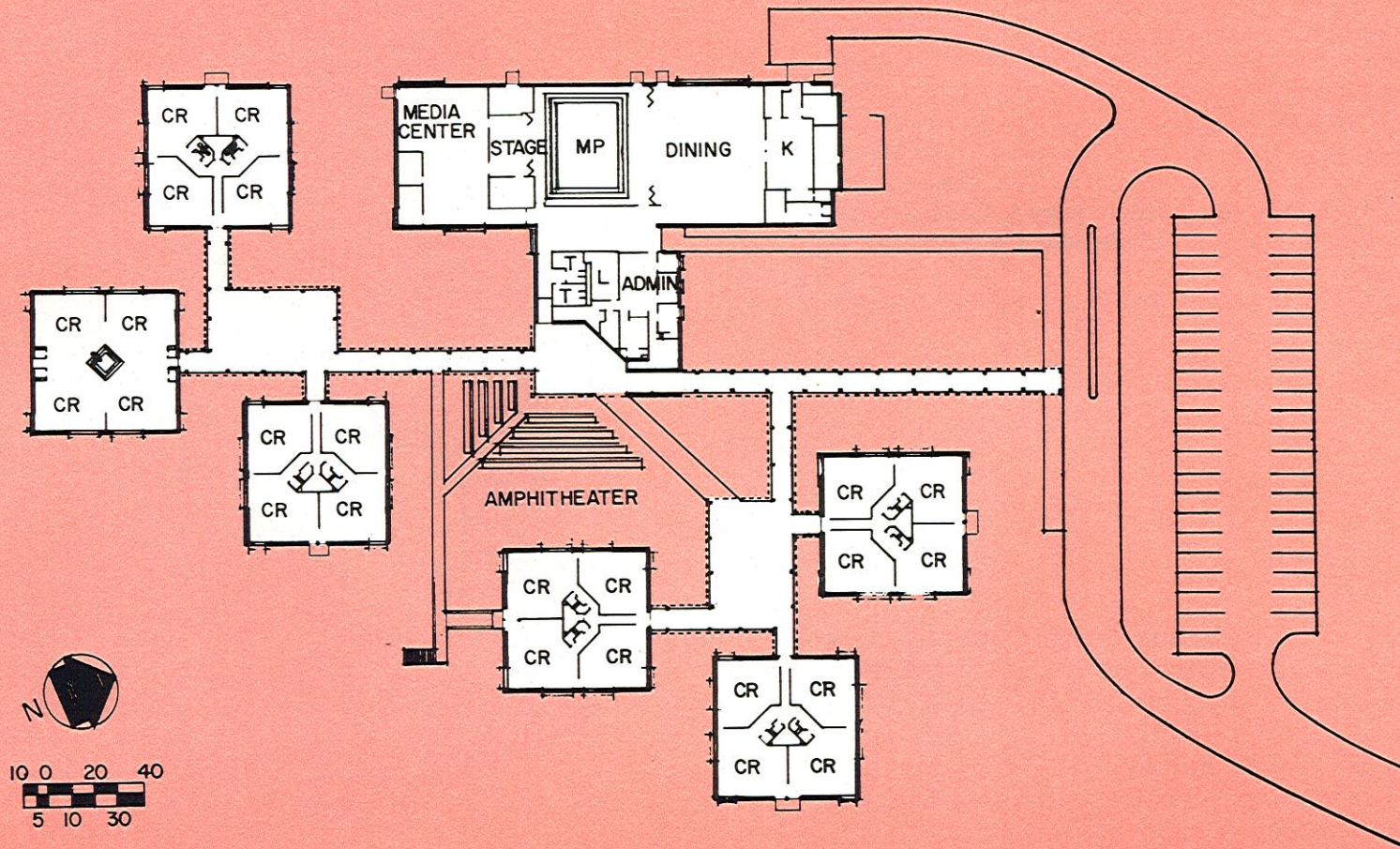
AFTER

7 MARY C. WILLIAMS ELEMENTARY

Administrative Unit New Hanover County
Superintendent Heyward C. Bellamy
Grade Organization K-4
Approximate Capacity 650
Square Footage 42,950 sq. ft.
Opening Date September, 1976
Architects Jefferies & Faris
Structural Engineers Henry Von Oesen & Associates
Mechanical and
Electrical Engineers Steuer-Cheatham Association

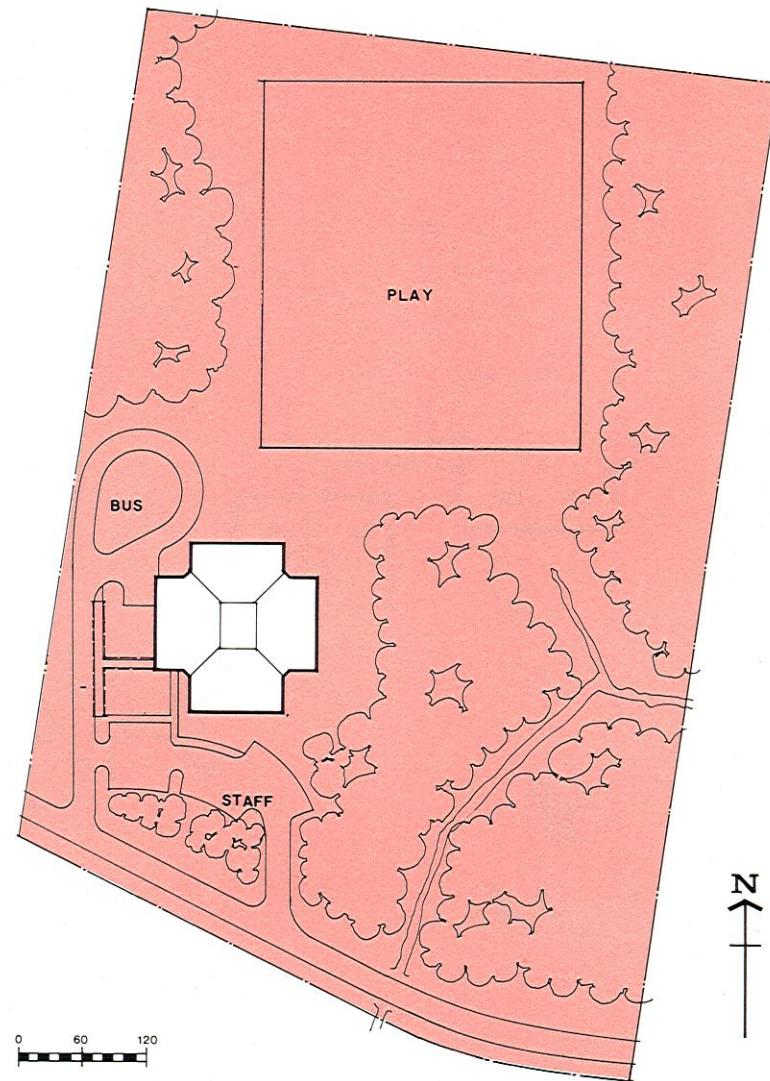
Sometimes repetition of a single planning element can result in design and construction economies. Although a campus plan does not always relate well to a complex educational program, it can be used to advantage where a more structured program is expected to prevail. This school has an advantage in that each four-teacher pod is built with flexible partitioning to facilitate temporary changes. Covered walks connect all pods to the central library and activities building. An unusual feature throughout is the use of wood siding to clad the exterior of the concrete block buildings. Hip-roofs shelter all buildings.



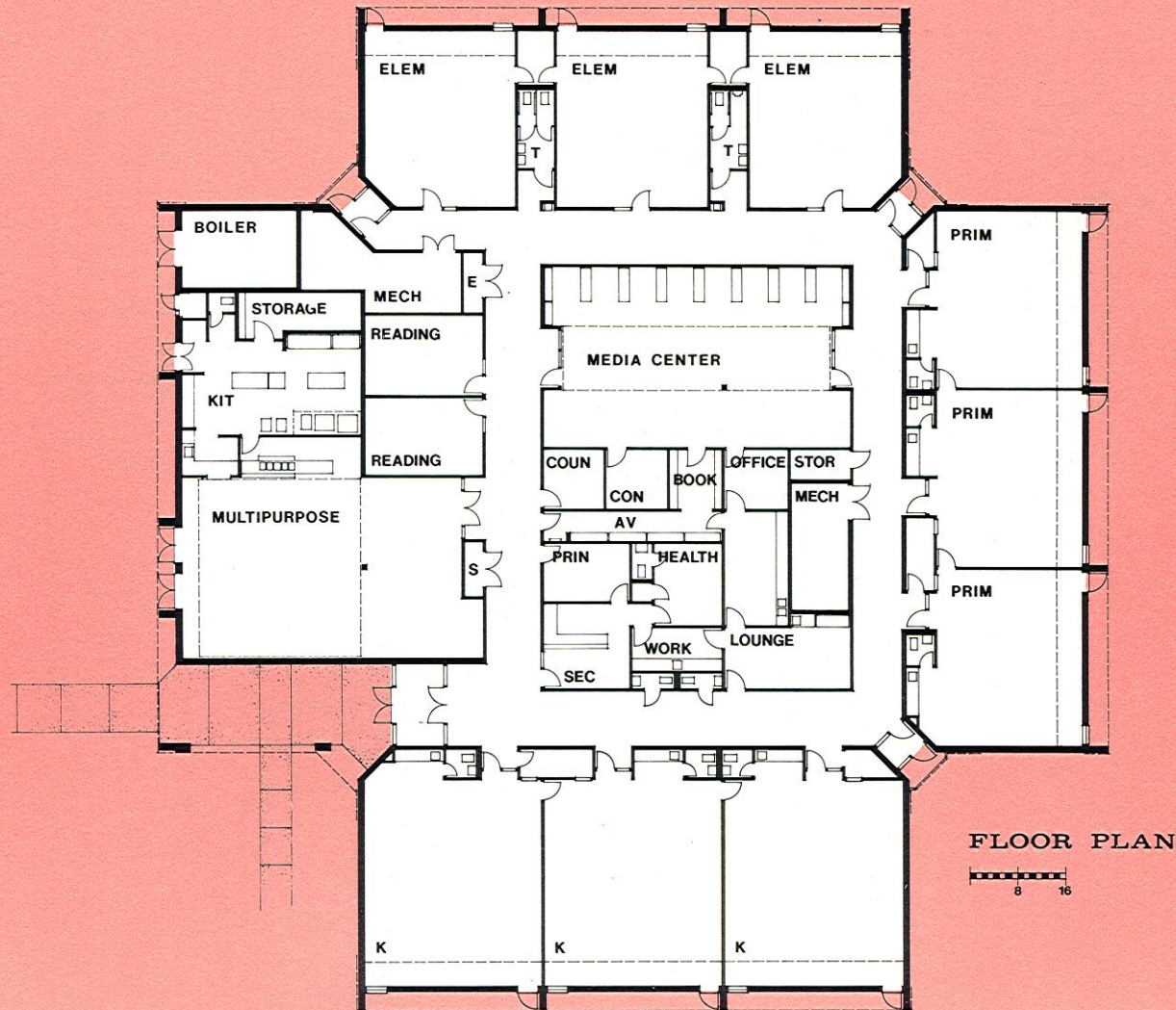


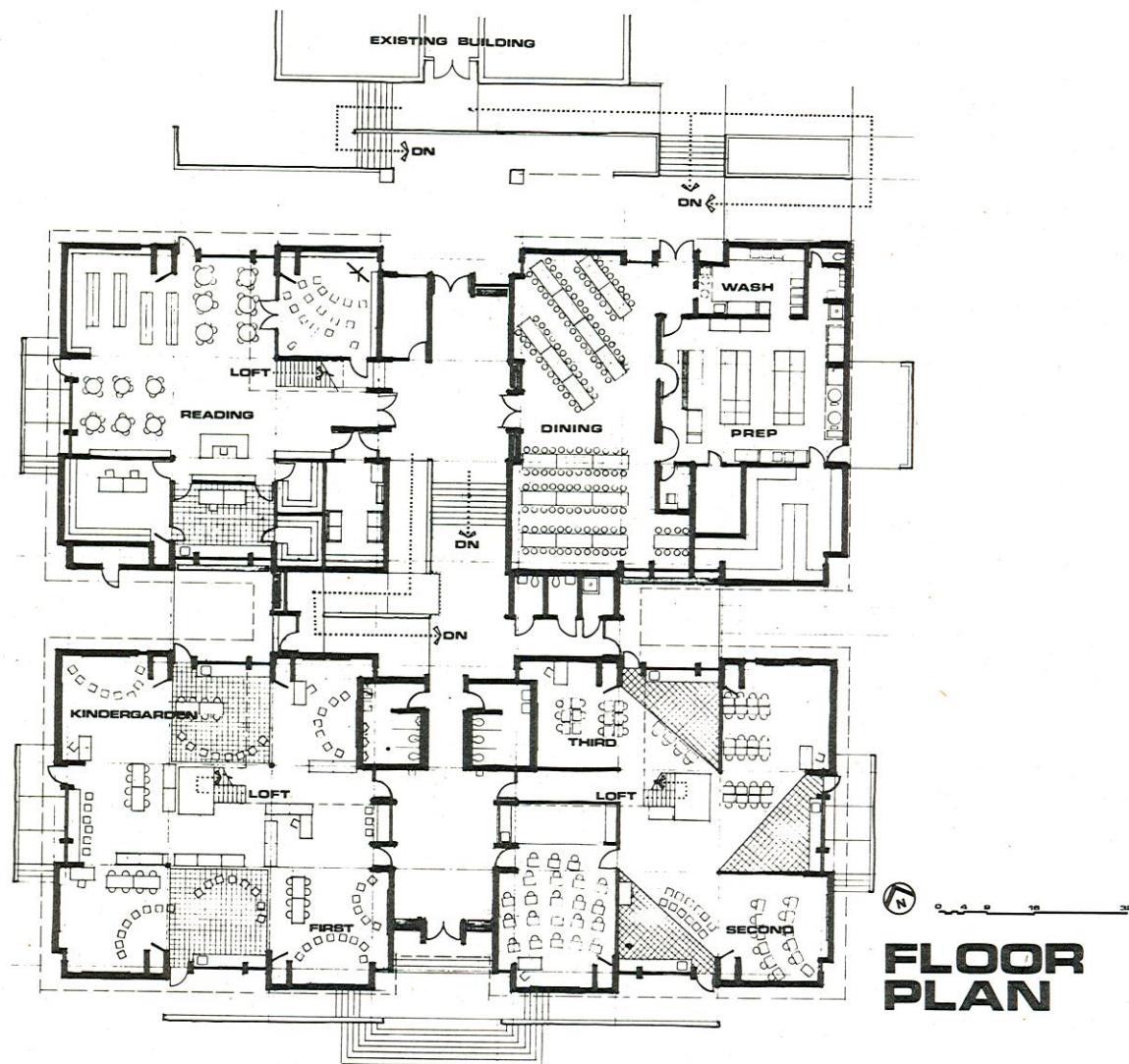
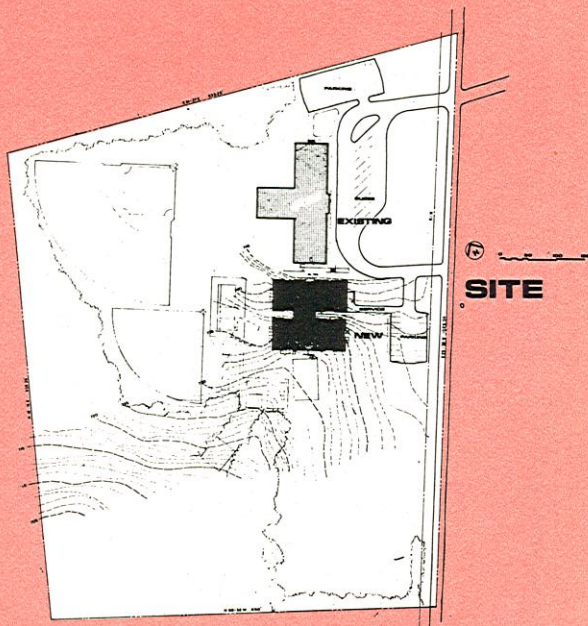
Administrative Unit Jones County
Superintendent J. S. Collins
Grade Organization K-6
Approximate Capacity 198
Square Footage 20,235 sq. ft
Opening Date August 31, 1979
Architects Theodore J. Peters/Jerry A. Cook, Associate
Structural Engineers Kimley-Horn & Associates, Inc.
Mechanical and Electrical Engineers Buffaloe, Morgan & Associates

Limited school construction budgets are always an opportunity for unconventional planning, regardless of the educational program to be housed. In this case, the designers responded by creating an architecturally simple building without resorting to the usual double-loaded corridor plan. Original site planning intended to take advantage of a nicely wooded site by using the trees for shading the building and retaining the soil. This part of the project was postponed by premature use of the bulldozer.



SITE PLAN





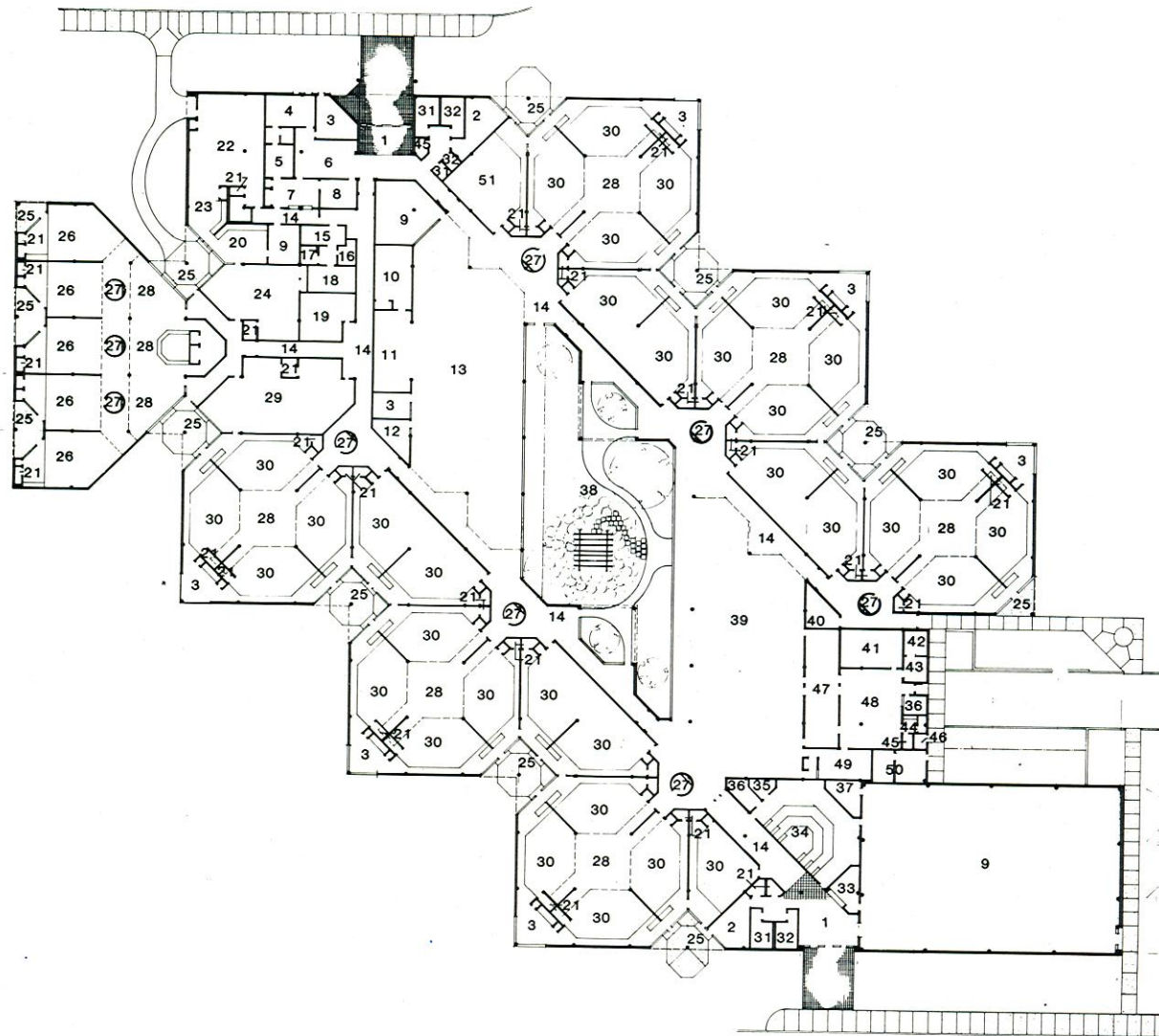


Administrative Unit Caswell County
Superintendent W. Willard Woodard
Grade Organization K-7
Approximate Capacity 240 (Addition) 400 (Total)
Square Footage 15,105 sq. ft.
Opening Date January, 1978
Architects George M. Smart-Architects, Inc.
Structural Engineer Fikri Saleh
Mechanical and Electrical Engineer G.W. Francis

Here is another example of laminated wood beams and wood roof deck construction used to provide an educational setting with more than the customary architectural affects. The high sloping roofs provide space for a loft area in each of the four pods. The photograph shows the library and a special activity loft area. Additional spatial variety is expressed by means of relating floor level changes to site contours. The visual complexity of the pods and the ramped level changes are not what one expects to see in an elementary school.

LEGEND

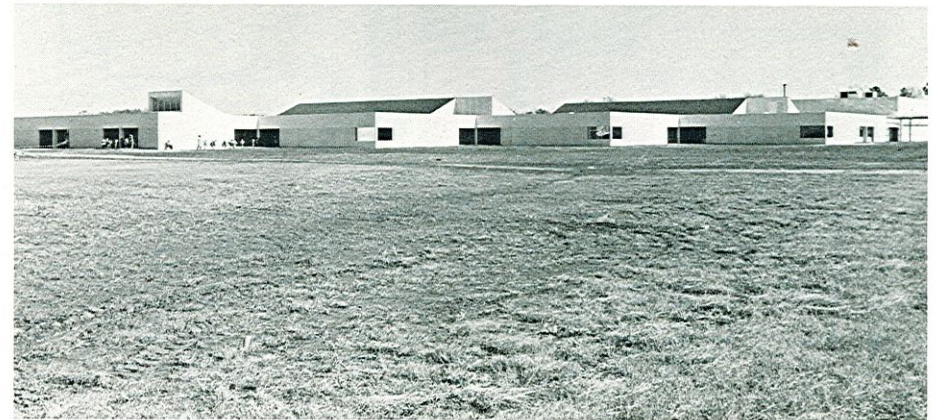
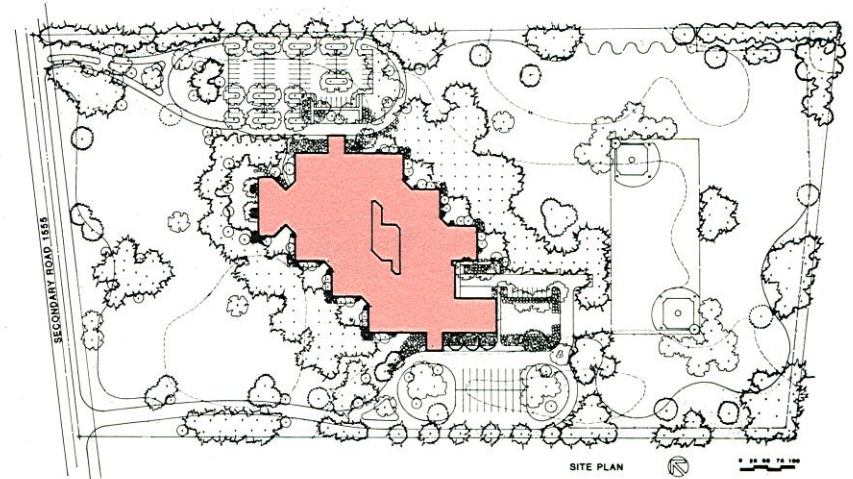
- 1 LOBBY
- 2 LOUNGE
- 3 CONFERENCE
- 4 PRINCIPAL
- 5 STORAGE
- 6 SECRETARY/RECEPTION
- 7 WORK ROOM
- 8 ASSISTANT PRINCIPAL
- 9 MULTIPURPOSE
- 10 AV STORAGE
- 11 OFFICE WORKROOM
- 12 SPEECH & HEARING
- 13 MEDIA CENTER
- 14 CORRIDOR
- 15 NURSE
- 16 EXAM
- 17 BATH
- 18 SICK BAY
- 19 GUIDANCE
- 20 SPECIAL PROJECTS
- 21 TOILETS
- 22 TRAINABLE MENTALLY RETARDED
- 23 KITCHEN
- 24 EDUCATABLE MENTALLY RETARDED
- 25 PORCH
- 26 KINDERGARTEN CLASSROOM
- 27 KIOSK
- 28 SHARED SPACE
- 29 REMEDIAL MATH & READING
- 30 CLASSROOM
- 31 MEN
- 32 WOMEN
- 33 SUPPLY STORE
- 34 MUSIC
- 35 PRACTICE
- 36 OFFICE
- 37 OFFICE/STORAGE
- 38 COURTYARD
- 39 DINING HALL
- 40 CUSTODIAN
- 41 STOREROOM
- 42 FREEZER
- 43 REFRIGERATOR
- 44 LOCKERS
- 45 JANITOR
- 46 CANWASH
- 47 SERVING
- 48 KITCHEN
- 49 DISHWASHING
- 50 MECHANICAL
- 51 GIFTED & TALENTED

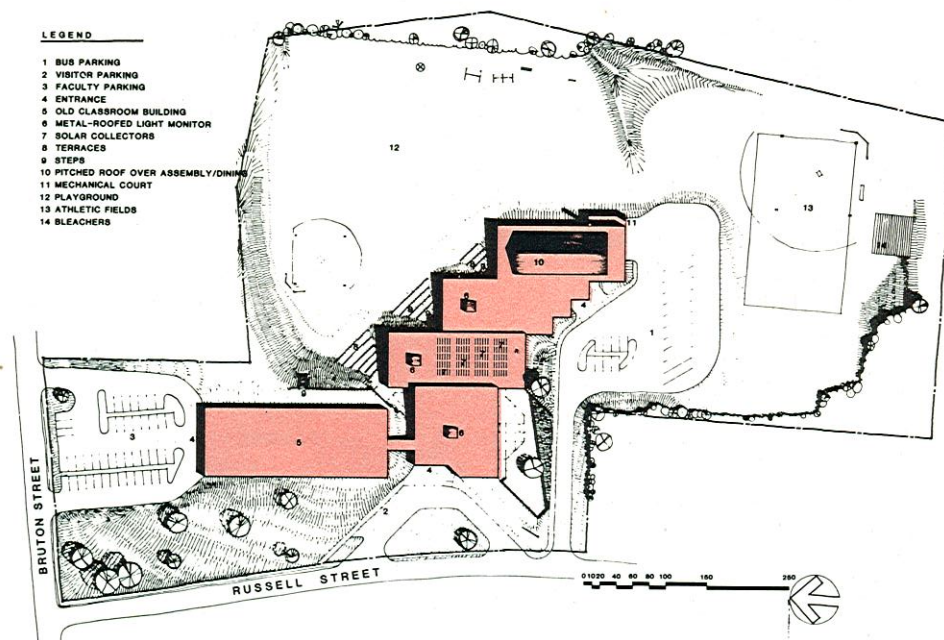


0 10 20 40 60 80

Designing a large school that avoids the look and impersonality of an institution is difficult. This large school succeeds in establishing architectural scale suitable for small children by repeating a pattern of two-classroom and four-classroom clusters around a spacious core of open areas and gardens. The diagonal juxtaposition of similar areas is particularly effective. Although there is a relationship between educational programming and architectural design programming, it is not a binding relationship. School buildings are seldom used as originally intended. Education objectives change. Personnel change. Children come and go. The school building remains. It needs to have some personality of its own in order to continue to be an interesting place.

Administrative Unit Robeson County
 Superintendent Purnell Swett
 Grade Organization K-6
 Approximate Capacity 1,150
 Square Footage 84,000 sq. ft.
 Opening Date May, 1980
 Architects Hayes, Howell & Associates
 Structural Engineers W. H. Gardner, Jr. & Associates
 Mechanical and
 Electrical Engineers McMichael, McCracken
 Landscape Architect Eden Planning Group

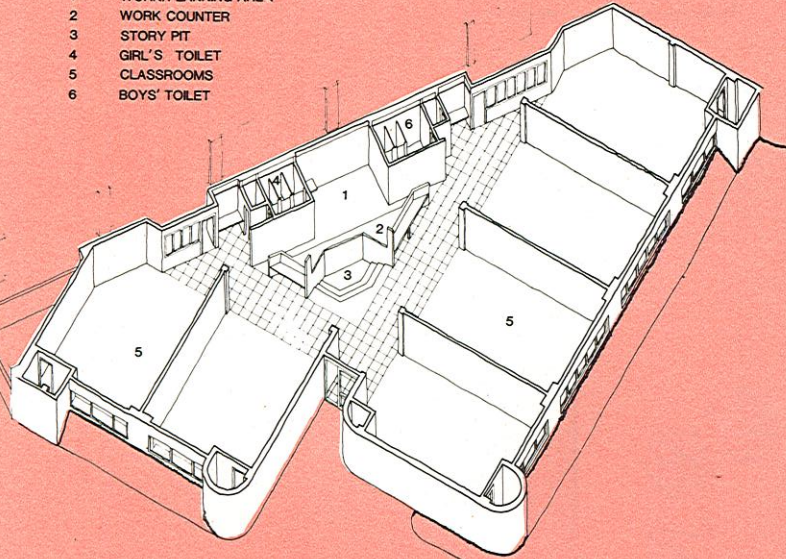




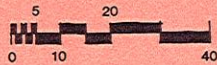
The initial educational and architectural program called for an open plan school with provisions for partitioning if self-contained classrooms are needed. Each classroom has an exterior door as a secondary exit. The overall plan is compact without resorting to the negative aspects of confining children to interior classrooms. Spatial variety results from rooms of many shapes, even though the basic planning groups are rectangles formed by standard column and beam construction. Here is more evidence of imaginative planning that begins with a standard educational program and a reasonable construction budget.

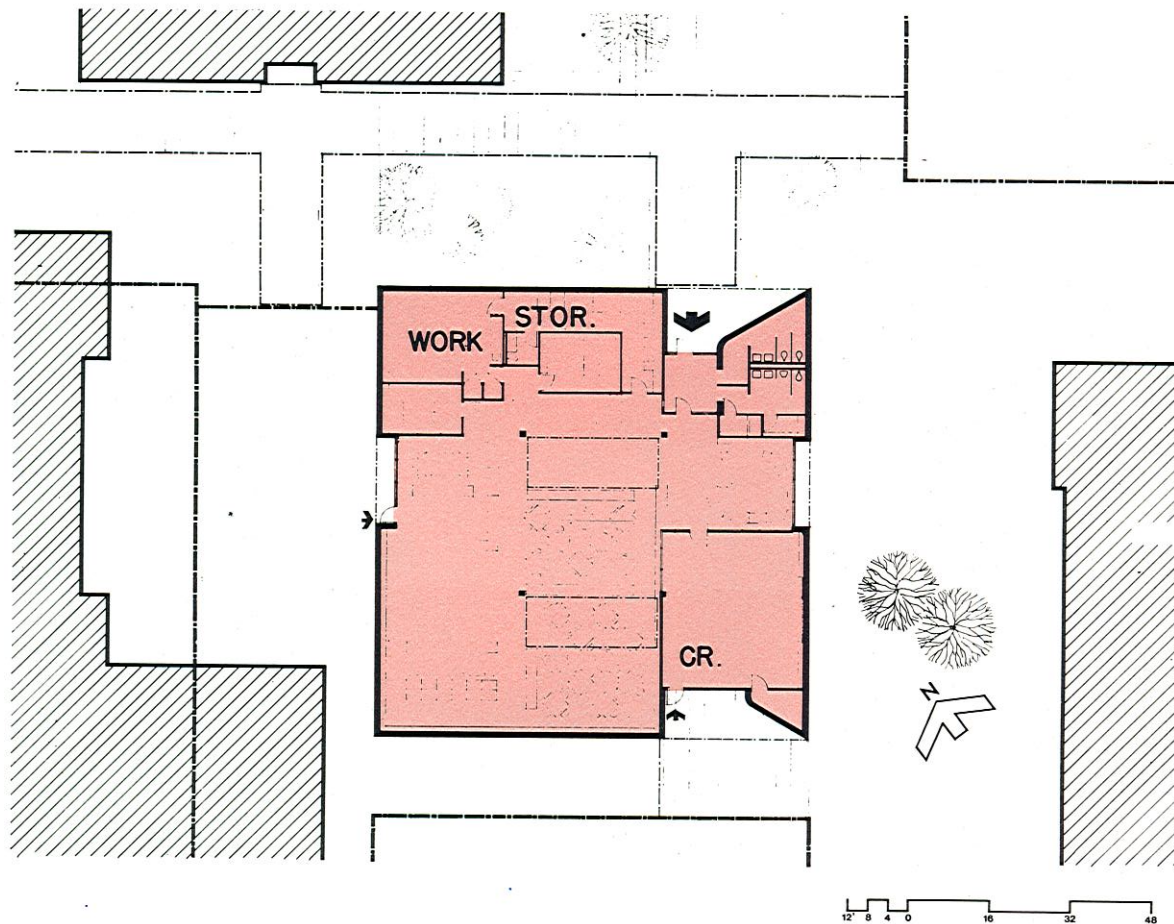
Administrative Unit	Montgomery County
Superintendent	John T. Jones
Grade Organization	K-5
Approximate Capacity	700
Square Footage	43,500 sq. ft.
Opening Date	March, 1980
Architects	Hayes, Howell & Associates
Structural Engineers	W. H. Gardner, Jr. & Associates
Mechanical and Electrical Engineers	McMichael, McCracken

- 1 WORK/PLANNING AREA
- 2 WORK COUNTER
- 3 STORY PIT
- 4 GIRL'S TOILET
- 5 CLASSROOMS
- 6 BOYS' TOILET



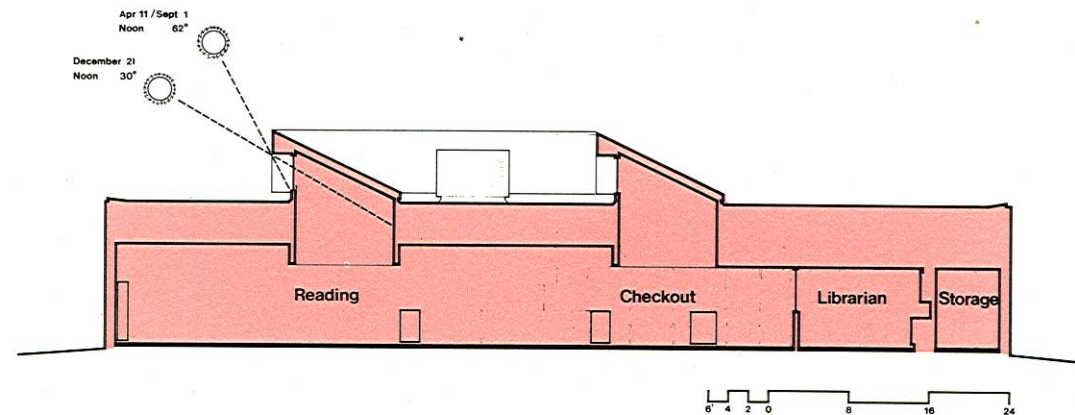
TYPICAL CLASSROOM POD AXONOMETRIC



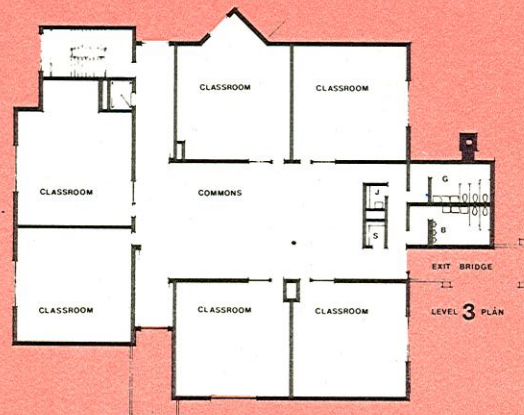
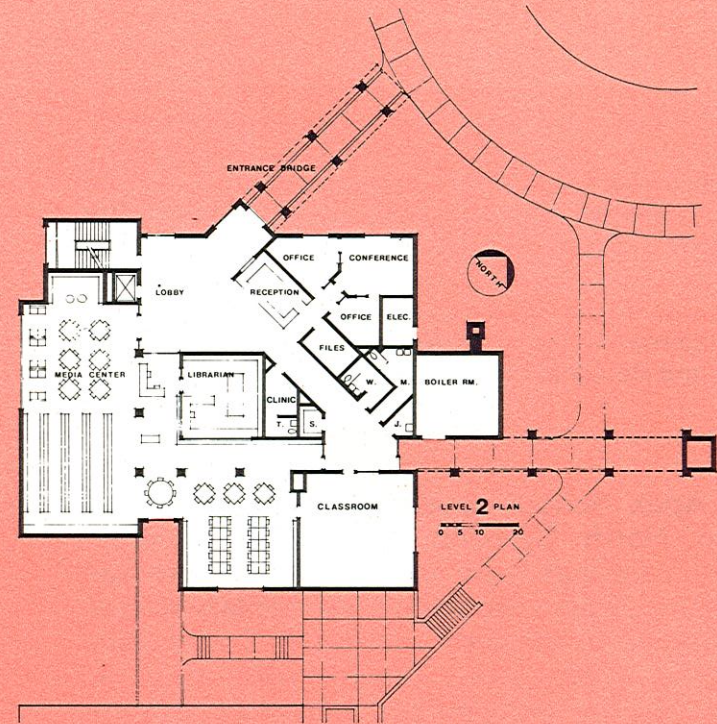
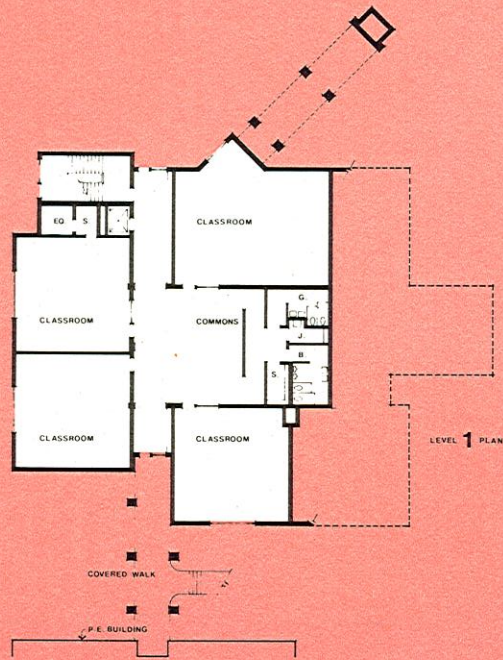


Administrative Unit Wake County
Superintendent John Murphy
Grade Organization 6-8
Approximate Capacity 850
Square Footage 7,228 sq. ft.
Opening Date January, 1981
Architects Shawcroft-Taylor
Structural Engineers David Fischetti
Mechanical and Electrical Engineers Progressive Design Collaborative, Ltd.

The old Apex School is characteristic of many schools in North Carolina. It consists of well-maintained buildings from several eras. Its use has changed from a high school to an elementary school to a middle school. The site is very small. Cost studies suggested that old and educationally obsolete facilities could be replaced on a regular basis by modern buildings. Intensive site planning was required so that buildings and traffic patterns could be built in an orderly way without disrupting the many good educational programs already in operation. Also, the community will not lose a landmark. Good programs can continue and building design quality can be improved by means of long-range planning.

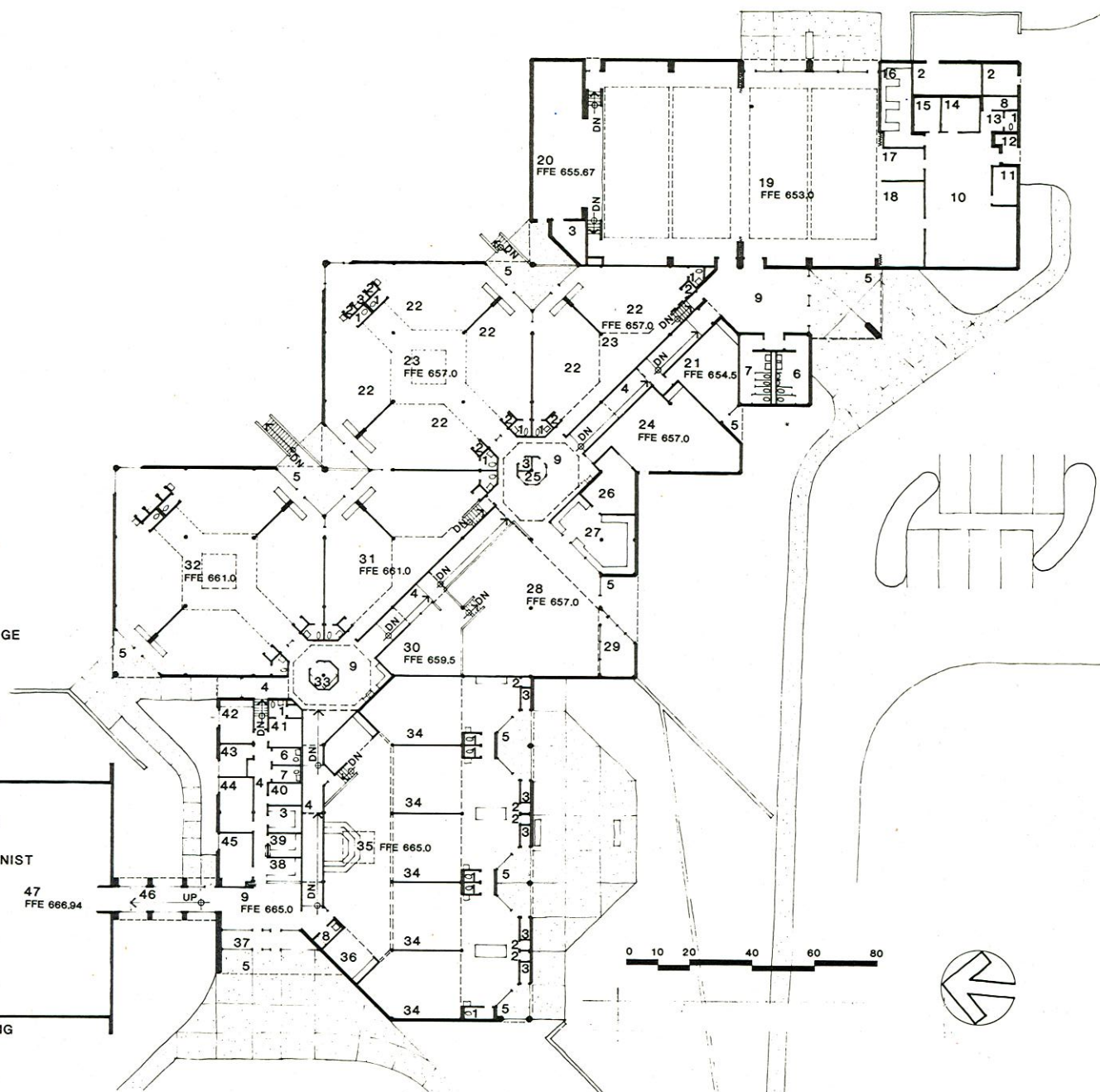


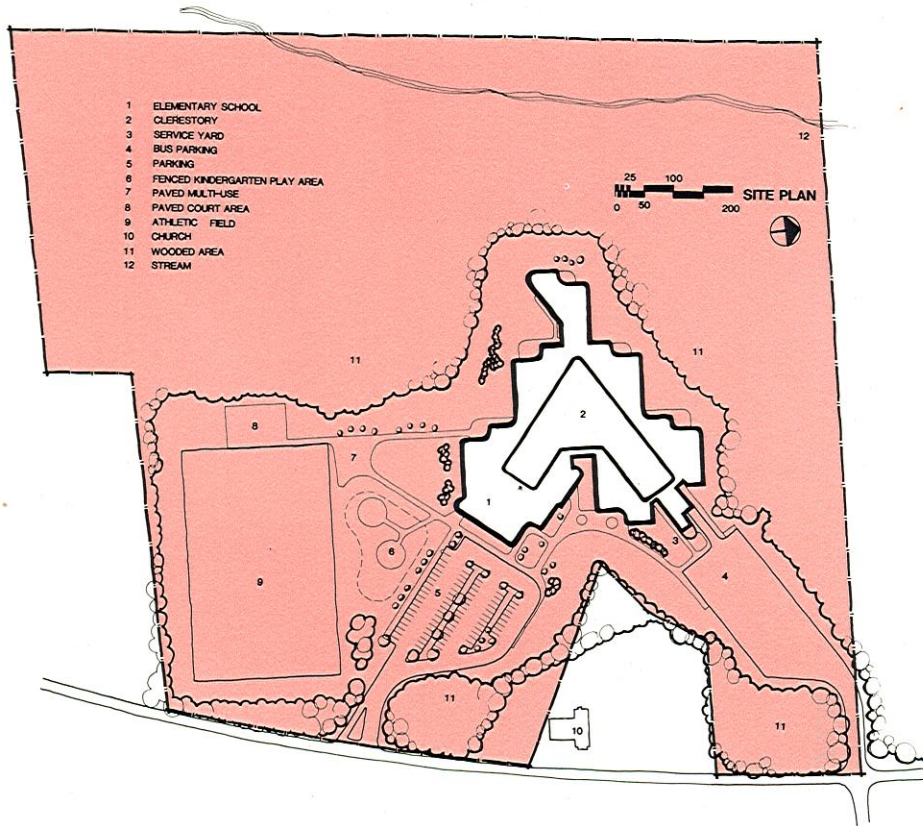
14 CROSSNORE-NEWLAND MIDDLE



LEGEND

- 1 TOILET
- 2 MECHANICAL
- 3 STORAGE
- 4 CORRIDOR
- 5 COVERED PORCH
- 6 MEN'S TOILET
- 7 WOMEN'S TOILET
- 8 JANITOR
- 9 LOBBY
- 10 KITCHEN
- 11 OFFICE
- 12 CAN WASH
- 13 LOCKERS
- 14 REFRIGERATOR
- 15 FREEZER
- 16 DRY STORAGE
- 17 DISHWASHING
- 18 SERVING
- 19 ASSEMBLY/DINING
- 20 STAGE
- 21 SPECIAL EDUCATION
- 22 CLASSROOM
- 23 SHARED SPACE
- 24 MEDIA MULTI-USE
- 25 SOLAR DISPLAY KIOSK
- 26 A.V./ PERIODICAL STORAGE
- 27 OFFICE/ PRODUCTION
- 28 MEDIA CENTER
- 29 CONFERENCE
- 30 STORY AREA
- 31 TWO CLASSROOM POD
- 32 FOUR CLASSROOM POD
- 33 STORAGE KIOSK
- 34 KINDERGARTEN
- 35 STAGE & SHARED AREA
- 36 TEACHERS' WORKROOM
- 37 VESTIBULE
- 38 SECRETARY / RECEPTIONIST
- 39 WORKROOM
- 40 RECORDS
- 41 HEALTH
- 42 TEACHERS' LOUNGE
- 43 COUNSELING
- 44 PRINCIPAL
- 45 CONFERENCE
- 46 CONNECTOR
- 47 OLD CLASSROOM BUILDING

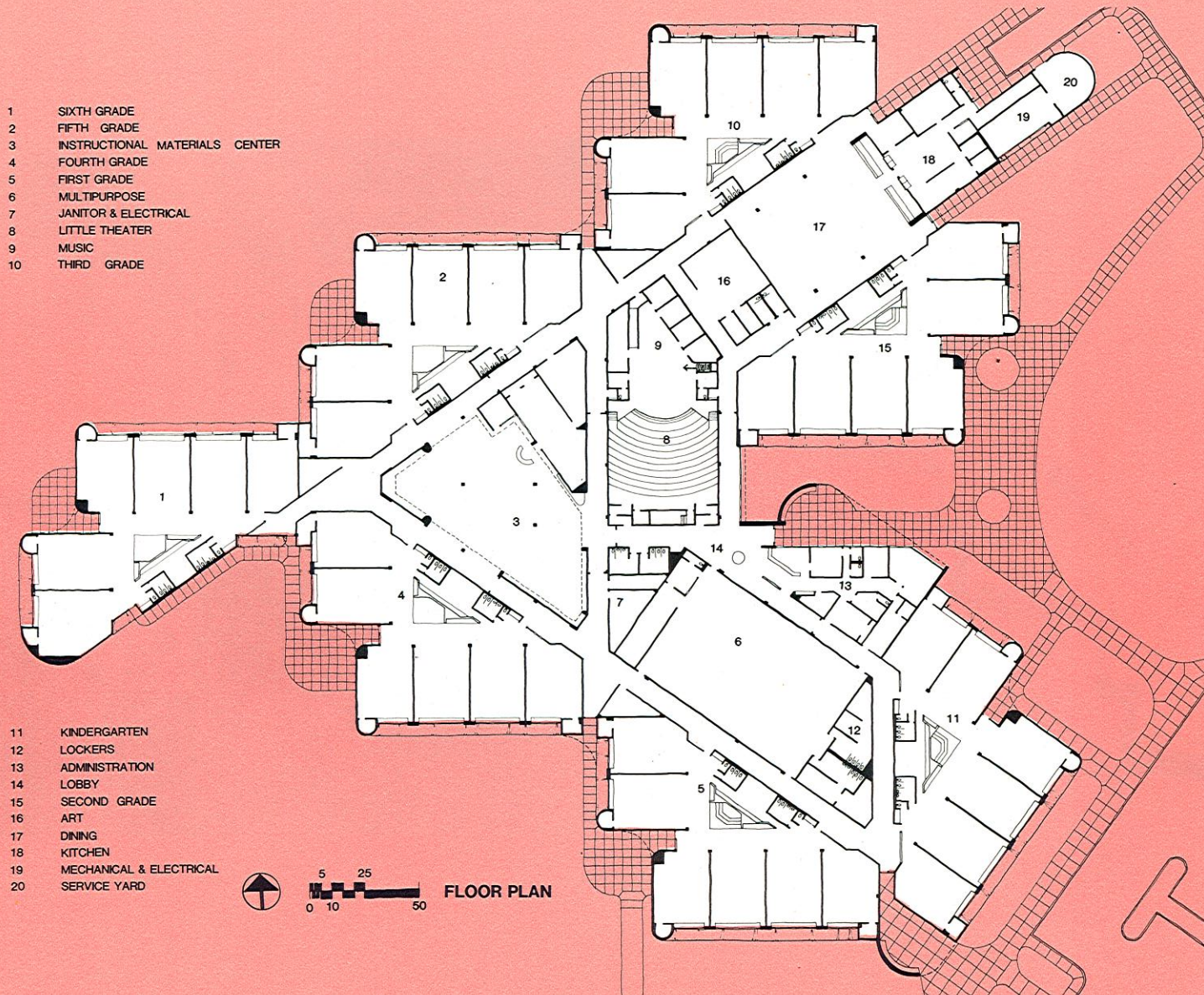




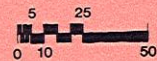
Administrative Unit Buncombe County
 Superintendent N. A. Miller
 Grade Organization K-6
 Approximate Capacity 980
 Square Footage 92,000 sq. ft.
 Opening Date August, 1980
 Architects Six Associates, Inc.
 Structural Engineers Six Associates, Inc.
 Mechanical and Electrical Engineers Six Associates, Inc.

All classrooms are clustered around shared work and toilet areas. These clusters provide some of the territorial identity necessary for children in large elementary schools. The clusters are arranged in a variety of patterns for spatial richness. Clusters are used as a way of planning for self-contained classrooms without the repetitiveness of a typical double-loaded corridor school. A continuous band of clerestory windows is the daylight source for major interior rooms such as the cafeteria, library, and gymnasium. The exterior shape is distinctive because of the rounded corners and because of earth bermed to windowsill height. See the energy section of this book for additional information.

- 1 SIXTH GRADE
- 2 FIFTH GRADE
- 3 INSTRUCTIONAL MATERIALS CENTER
- 4 FOURTH GRADE
- 5 FIRST GRADE
- 6 MULTIPURPOSE
- 7 JANITOR & ELECTRICAL
- 8 LITTLE THEATER
- 9 MUSIC
- 10 THIRD GRADE

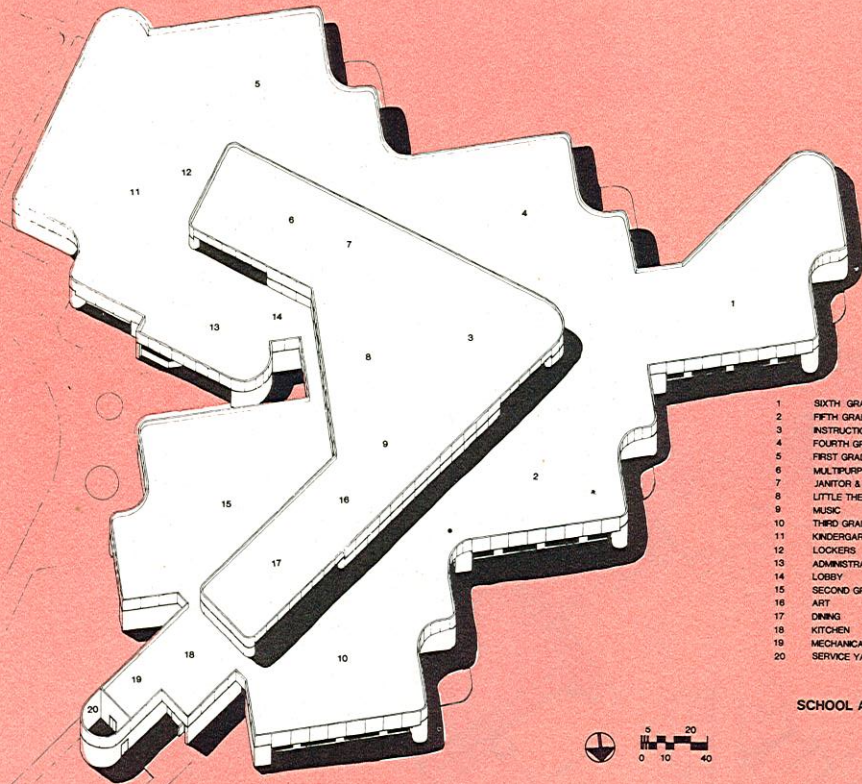


- 11 KINDERGARTEN
- 12 LOCKERS
- 13 ADMINISTRATION
- 14 LOBBY
- 15 SECOND GRADE
- 16 ART
- 17 DINING
- 18 KITCHEN
- 19 MECHANICAL & ELECTRICAL
- 20 SERVICE YARD



FLOOR PLAN

12 WILLIAM ESTES ELEMENTARY



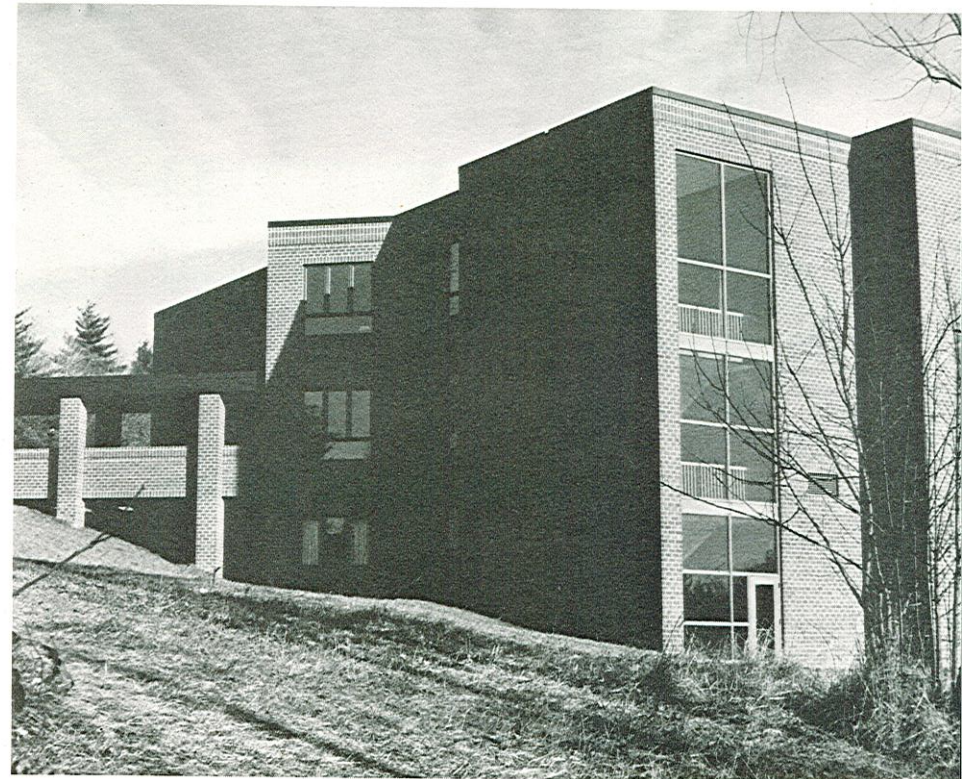
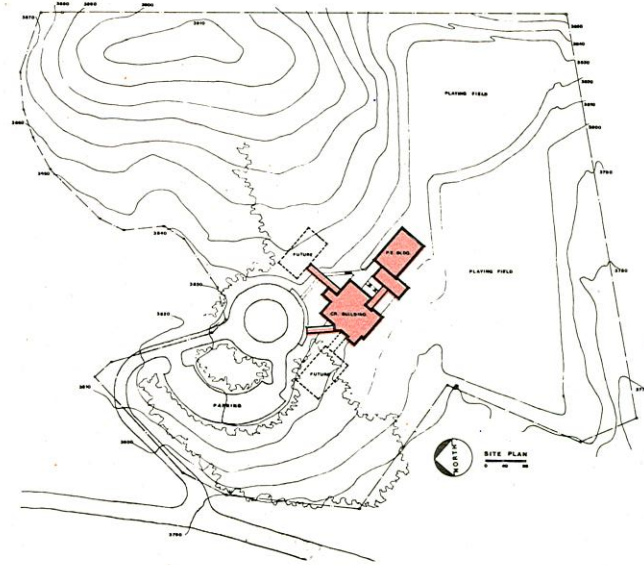
1. SIXTH GRADE
2. FIFTH GRADE
3. INSTRUCTIONAL MATERIALS CENTER
4. FOURTH GRADE
5. FIRST GRADE
6. MULTIPURPOSE
7. JANITOR & ELECTRICAL CLOSETS
8. LITTLE THEATER
9. MUSIC
10. THIRD GRADE
11. KINDERGARTEN
12. LOCKERS
13. ADMINISTRATION
14. LOBBY
15. SECOND GRADE
16. ART
17. DINING
18. KITCHEN
19. MECHANICAL & ELECTRICAL
20. SERVICE YARD

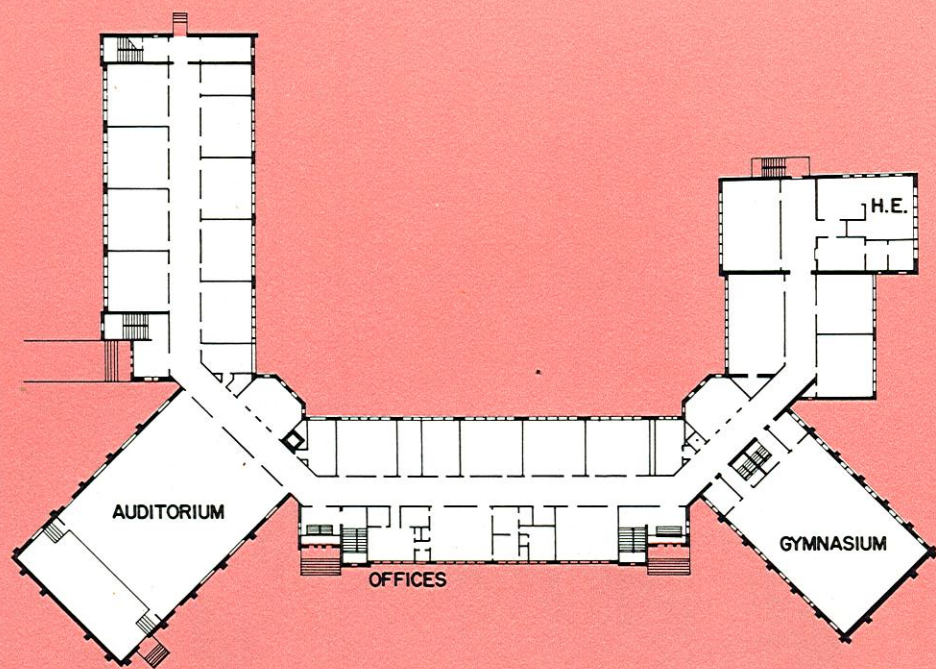
SCHOOL AXONOMETRIC



Administrative Unit Avery County
 Superintendent Harry McGee
 Grade Organization 7-8
 Approximate Capacity 300
 Square Footage 33,000 sq. ft.
 Opening Date August, 1979
 Architects Padgett & Freeman
 Structural Engineers Padgett & Freeman
 Mechanical Engineers Mechanical Engineers, Inc.
 Electrical Engineers Register & Cummings

The chief determinant of a school plan is frequently the extreme change of elevation on a site. In this case, a cross slope of one hundred fifty feet determined the three-story scheme used for the Crossnore-Newland Middle School. A standard educational program is housed in a compact building which will be the hub for three adjacent buildings. The gymnasium is part of first phase work.

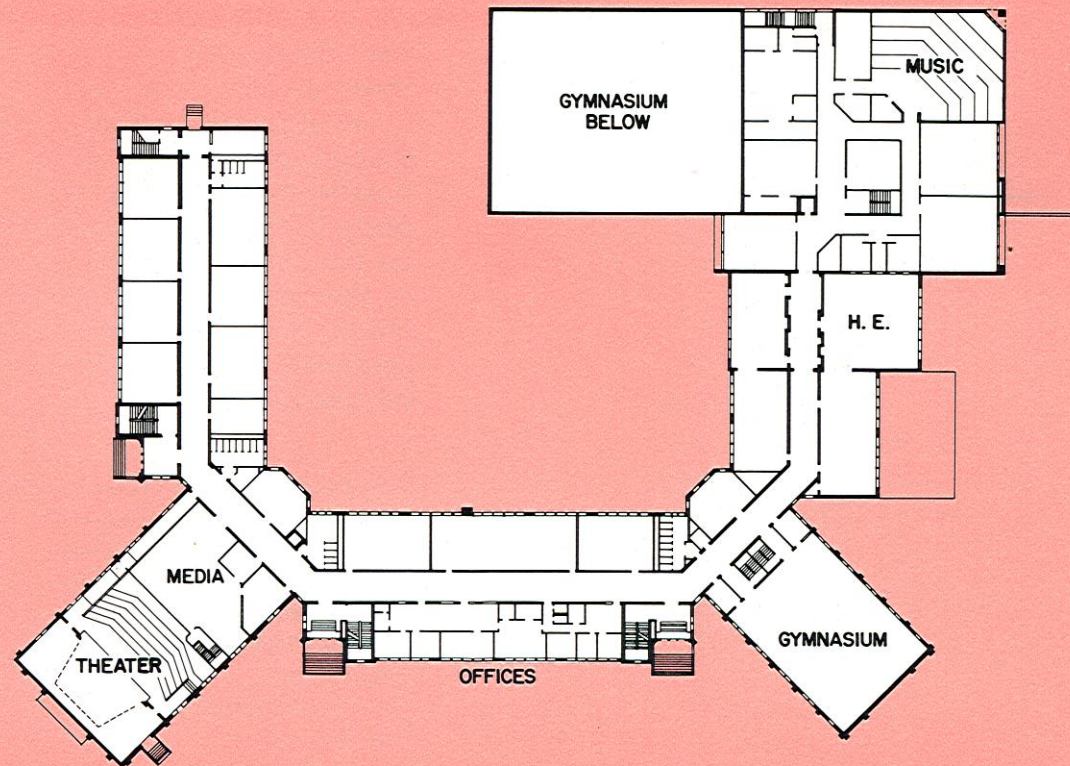




MAIN FLOOR BEFORE

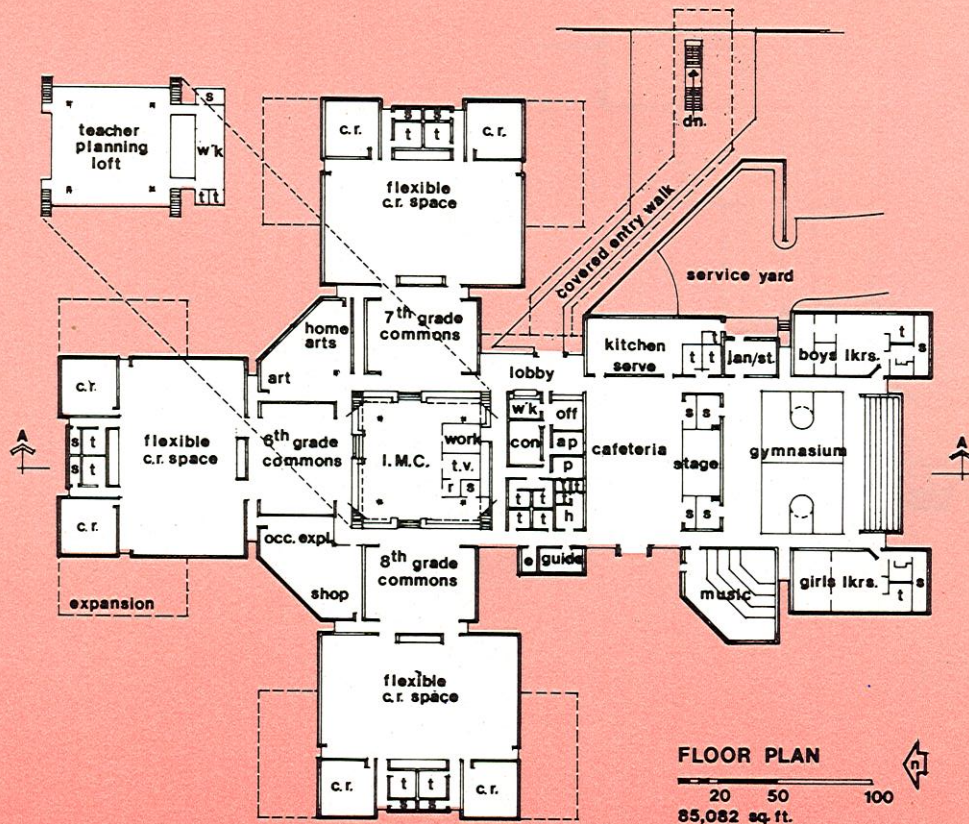
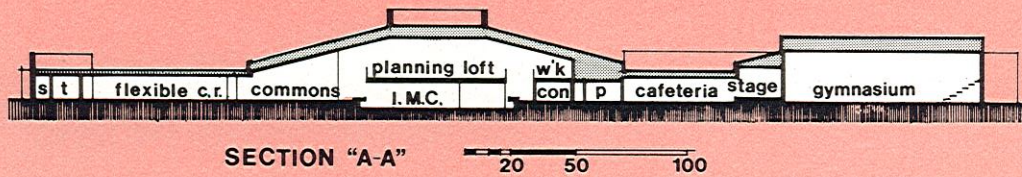
Administrative Unit High Point City
 Superintendent Edwin L. West, Jr.
 Grade Organization 6-8
 Approximate Capacity 900
 Square Footage 78,000 renovated; 32,000 new
 Opening Date Fall, 1982
 Architects Hyatt Hammond & Associates
 Structural Engineers Hyatt Hammond & Associates
 Mechanical Engineers Wilson & Lysiak, Inc.
 Electrical Engineer William H. Johnson

This school is an example of major renovation of an old facility. Several cities have similar 1920's style school buildings. Many of them have reinforced concrete frames and masonry walls, which would be expensive to duplicate at today's prices. Renovation and remodeling to accommodate changing educational programs frequently can be economically justified. Converting the Ferndale High School structure into a junior high is recycling at its best when one considers the high cost of building a new school of similar quality. Site renovations include reorientation of traffic patterns and main entrances to accommodate the gymnasium and cafeteria addition.



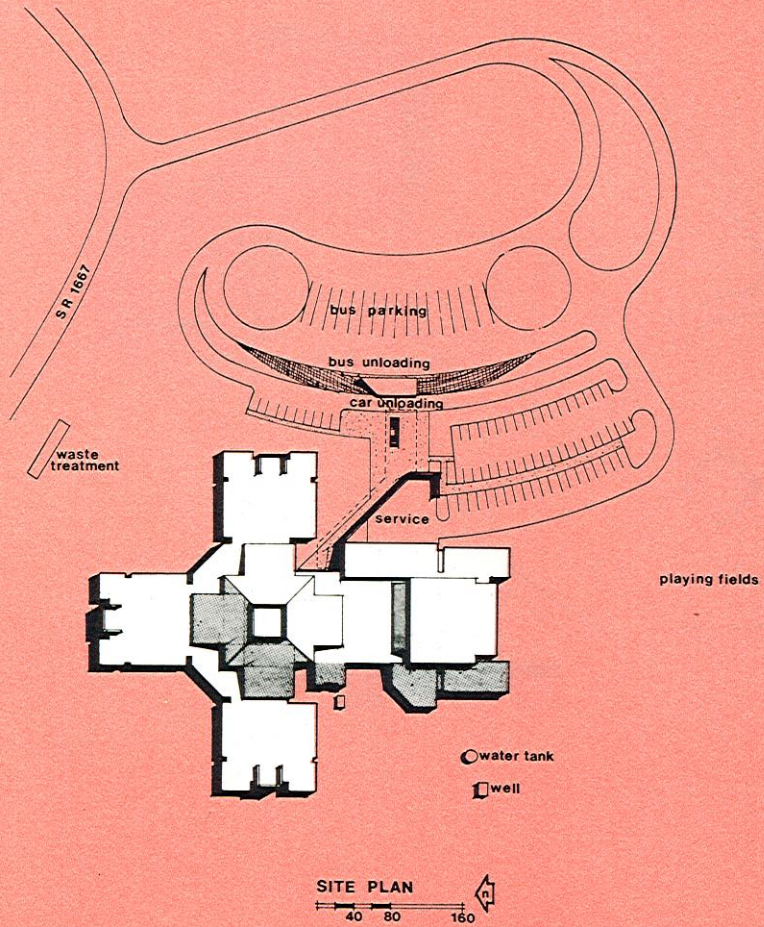
MAIN FLOOR AFTER

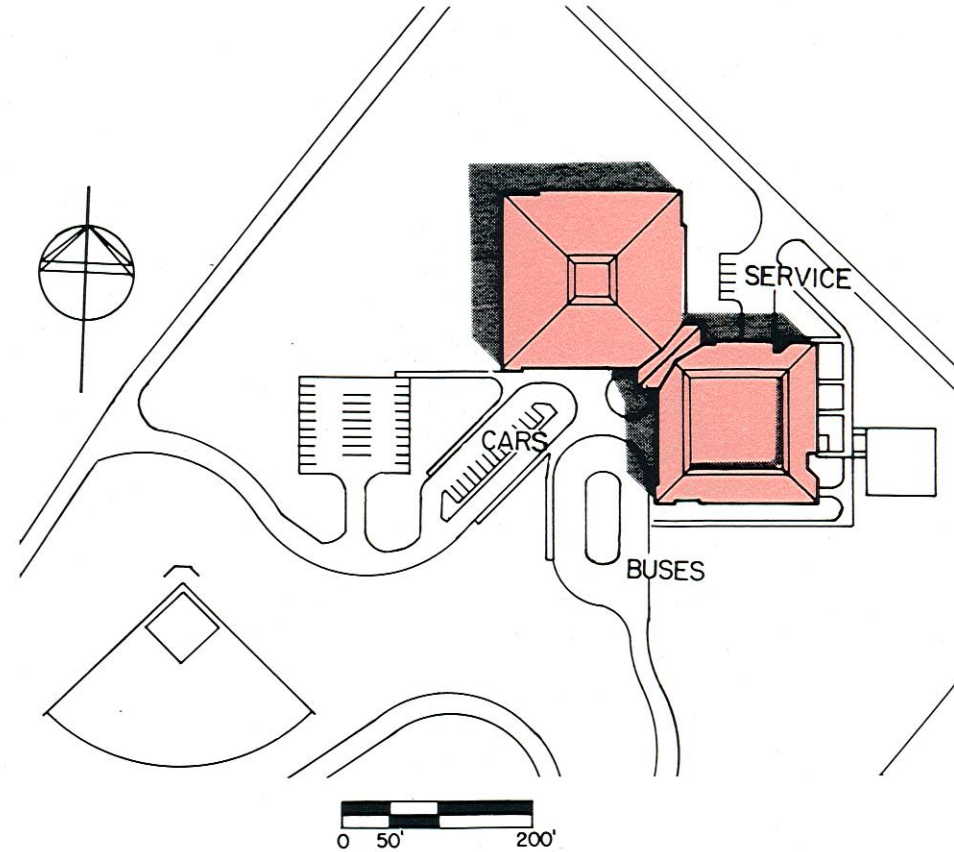
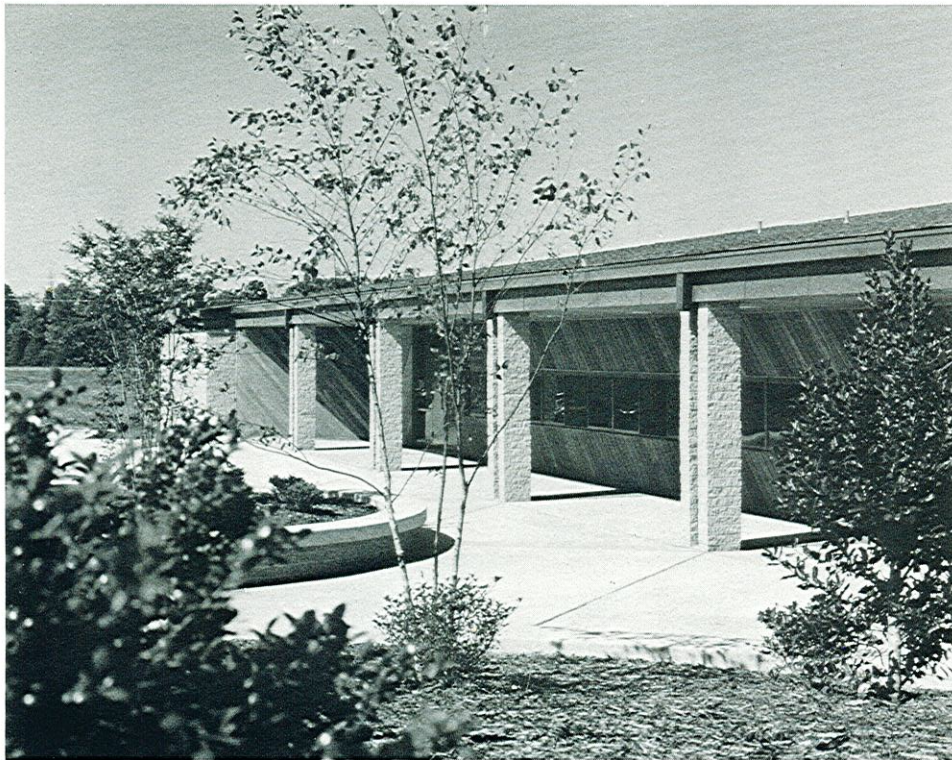
16 MACON MIDDLE



The distinguishing feature of this school is a large three level central core containing the library and other support facilities. The photograph shows the spaciousness of this area. Ceilings and roofs slope downward from the core to classroom houses or pods. Each pod contains a flexible open floor area to be divided as teachers require. Each grade connects to the central core through its own multi-use commons. Second phase construction will include the cafeteria, gymnasium, and music cluster, as shown on the plan.

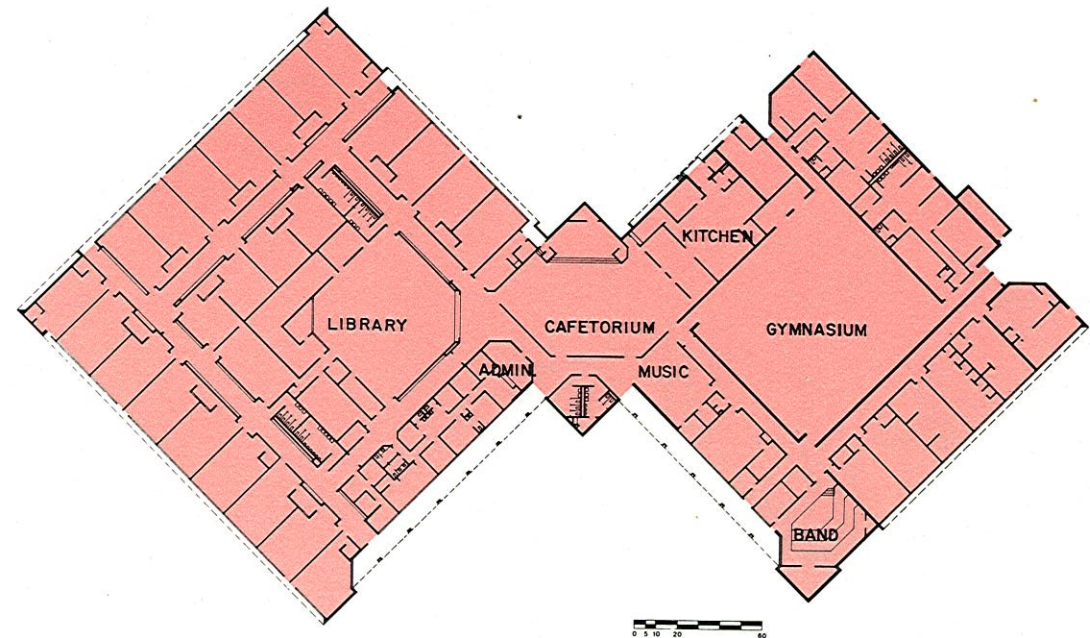
Administrative Unit Macon County
 Superintendent Lonnie H. Crawford
 Grade Organization 7-8
 Approximate Capacity 500
 Square Footage 50,000 sq. ft.
 Opening Date August, 1975
 Architects Kyle C. Boone
 Structural Engineers Bowen & Feinberg
 Mechanical and
 Electrical Engineers Reece, Noland & McElrath, Inc.

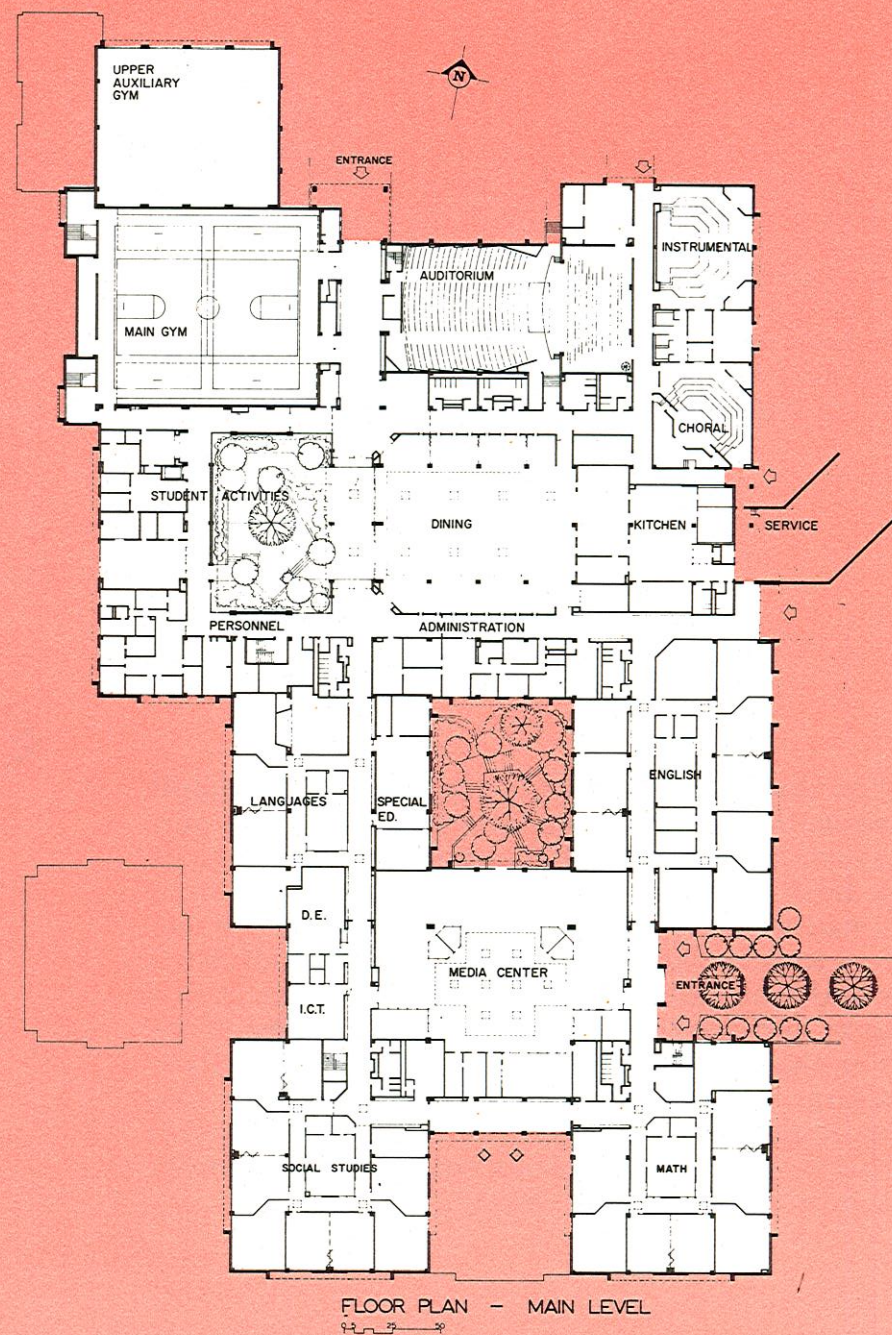
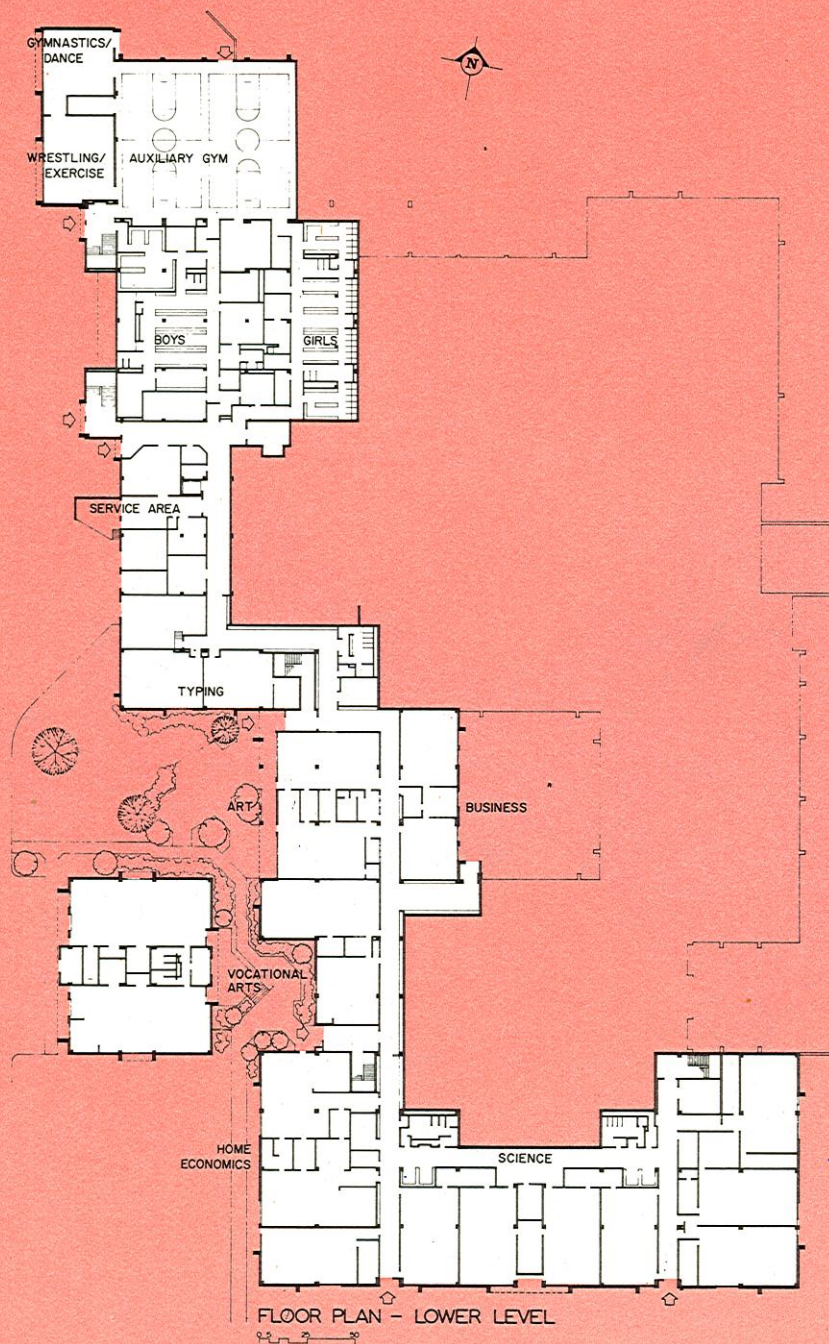




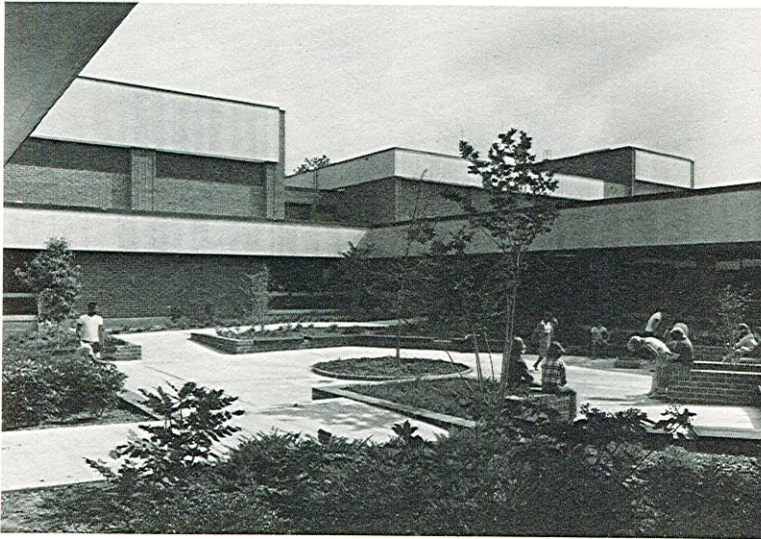
Administrative Unit Cabarrus County
 Superintendent Joseph N. Fries
 Grade Organization 7-8
 Approximate Capacity 800
 Square Footage 78,350 sq. ft.
 Opening Date August, 1980
 Architects Little and Associates, Inc.
 Structural Engineers Little and Associates, Inc.
 Mechanical and
 Electrical Engineers Schultz and Associates

When does a junior high become a middle school? Frequently the difference is only the name. For purposes of facility design, this project could be a model for both types of schools. A hilltop location is dramatized by massive hip-roofs which define two large, square classroom clusters. The hip-roofs shelter and articulate general studies classrooms in one cluster and exploratory and support facilities in the other cluster. The entrance arcades are particularly inviting. Exterior proportions and scale are distinguished by the absence of the frequently-used heavy fascia treatment which has become commonplace in school building design.

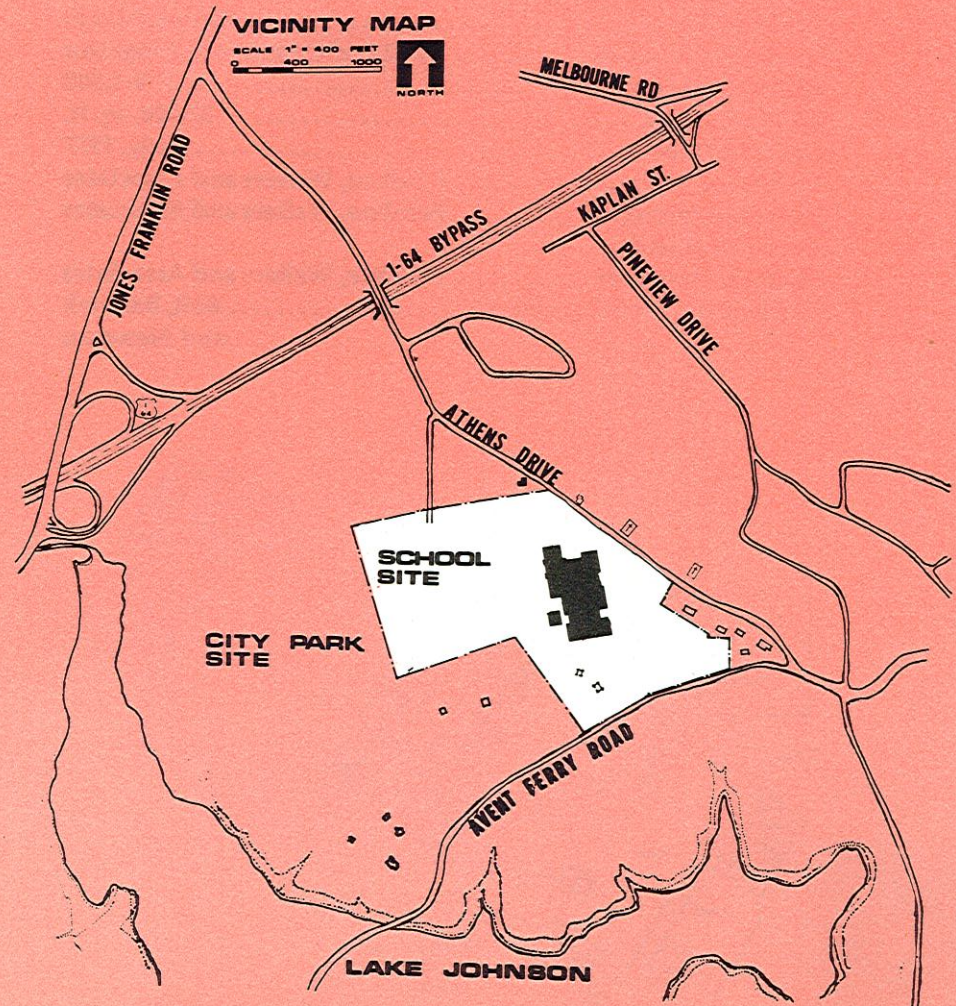




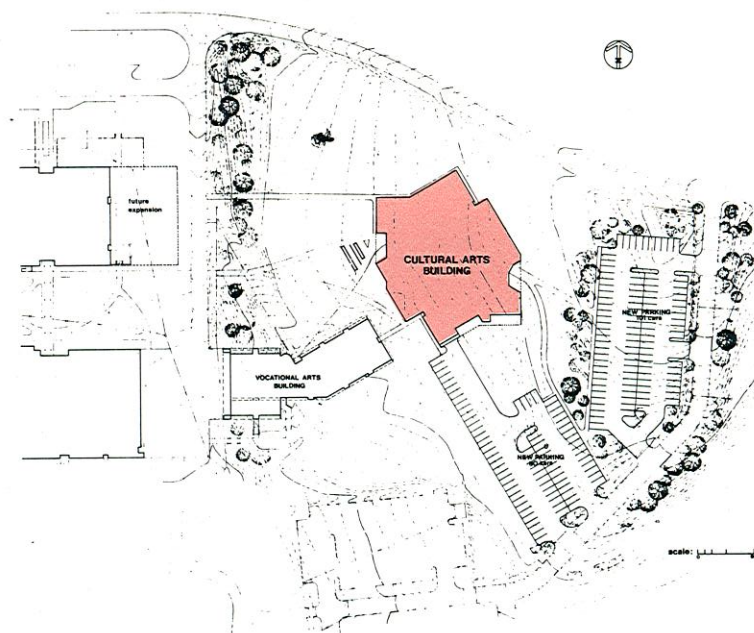
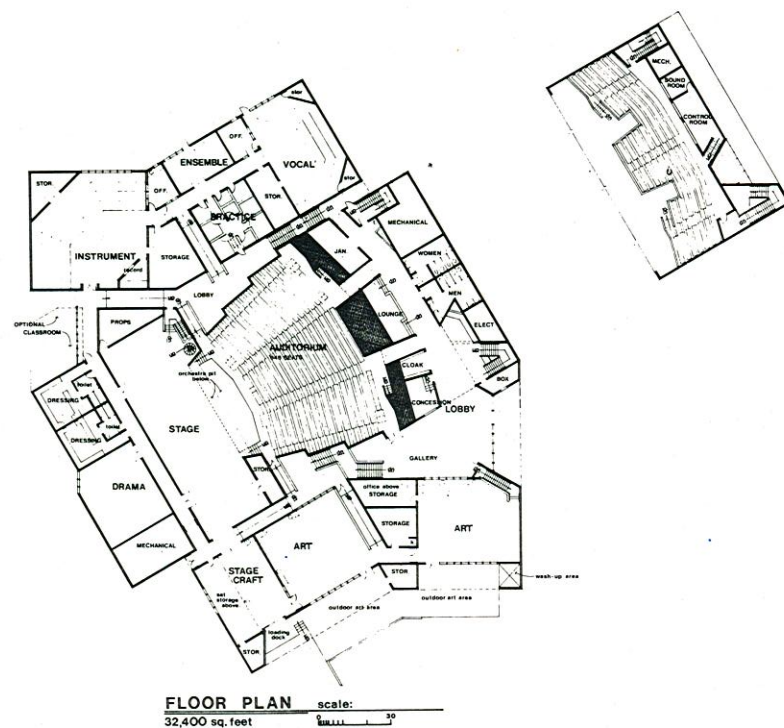
Year round community use of this school building, outdoor facilities, and adjacent Lake Johnson public areas were major planning considerations. The Raleigh City Parks and Recreation Department cooperated to help produce an outstanding example of a community school. There are activities here day and night throughout the year open to the public, including the library. When the school was planned it had the largest per pupil square footage ratio in North Carolina. The extra spaciousness has reinforced its value due to subsequent pupil attendance zone realignments. Visitors interested in construction details can see standard building materials and finishes used for best appearance and easy maintenance to produce a quality school building.



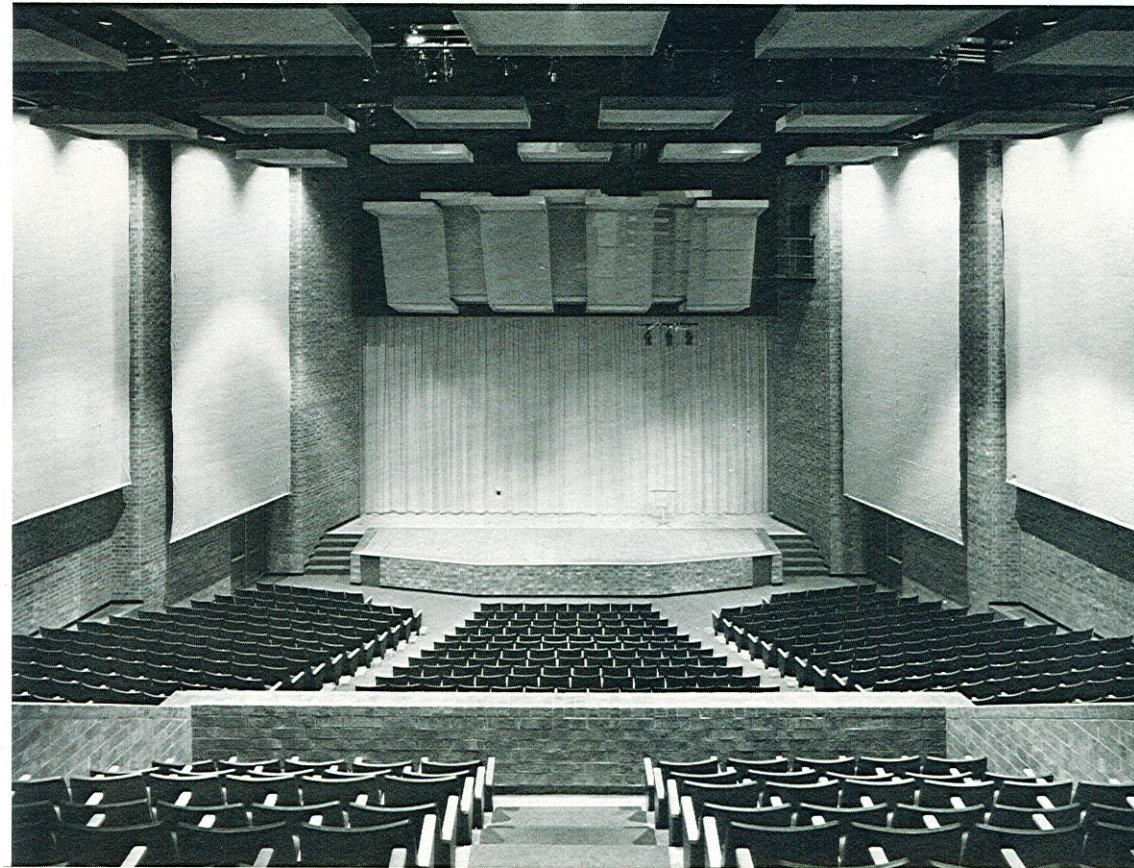
Administrative Unit	Wake County
Superintendent	John Murphy
Grade Organization	10-12
Approximate Capacity	1,620
Square Footage	240,140 sq. ft.
Opening Date	Fall, 1978
Architects	F. Carter Williams
Structural Engineers	Lasater-Hopkins
Mechanical and Electrical Engineers	Buffaloe, Morgan & Associates
Landscape Architect	Lewis Clarke Associates



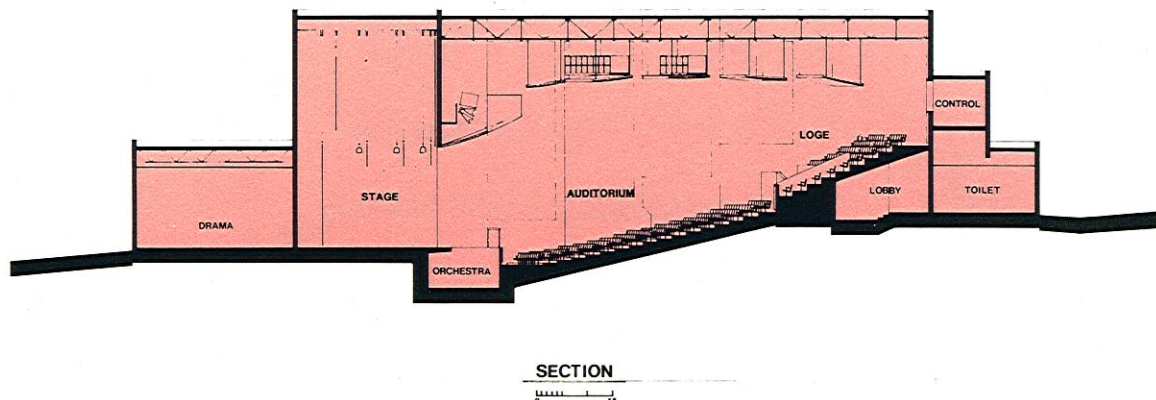
Administrative Unit Chapel Hill/Carrboro City
 Superintendent Pamela Mayer
 Grade Organization 10-12 and Community Programs
 Approximate Capacity 770-1,500
 Square Footage 37,400, sq. ft.
 Opening Date July, 1977
 Architects Ferebee, Walters and Associates
 Structural Engineers Ferebee, Walters and Associates
 Mechanical and
 Electrical Engineers Ferebee, Walters and Associates
 Special Acoustical Consultants Bolt, Baranek
 and Newman



At a time when community use of schools is growing, a high school arts center becomes especially important. If the arts are to be adequately provided for, facilities must be planned with a minimum of budget compromise. The individual demands of instrumental music, vocal music, graphic arts, craft arts, dance, and drama can be mutually enriched if they are housed in facilities which encourage cooperation among varying talents. The planners of this complex recognized the possibilities and built accordingly. The rest is up to the teachers, students, and community members who use the facility on a regular basis.

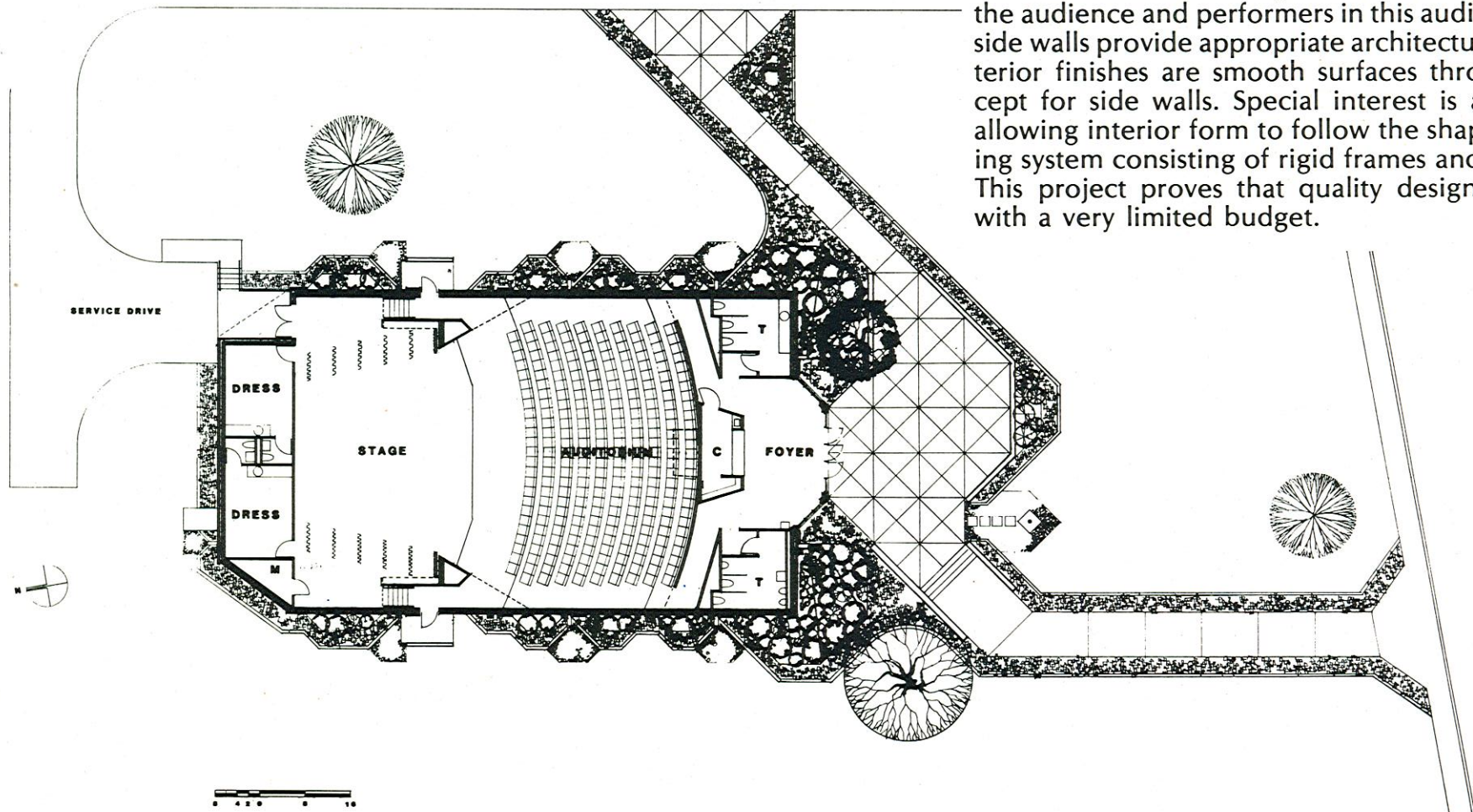


RICK L. ALEXANDER
PHOTOGRAPHY, INC.
WAXHAW, N.C.



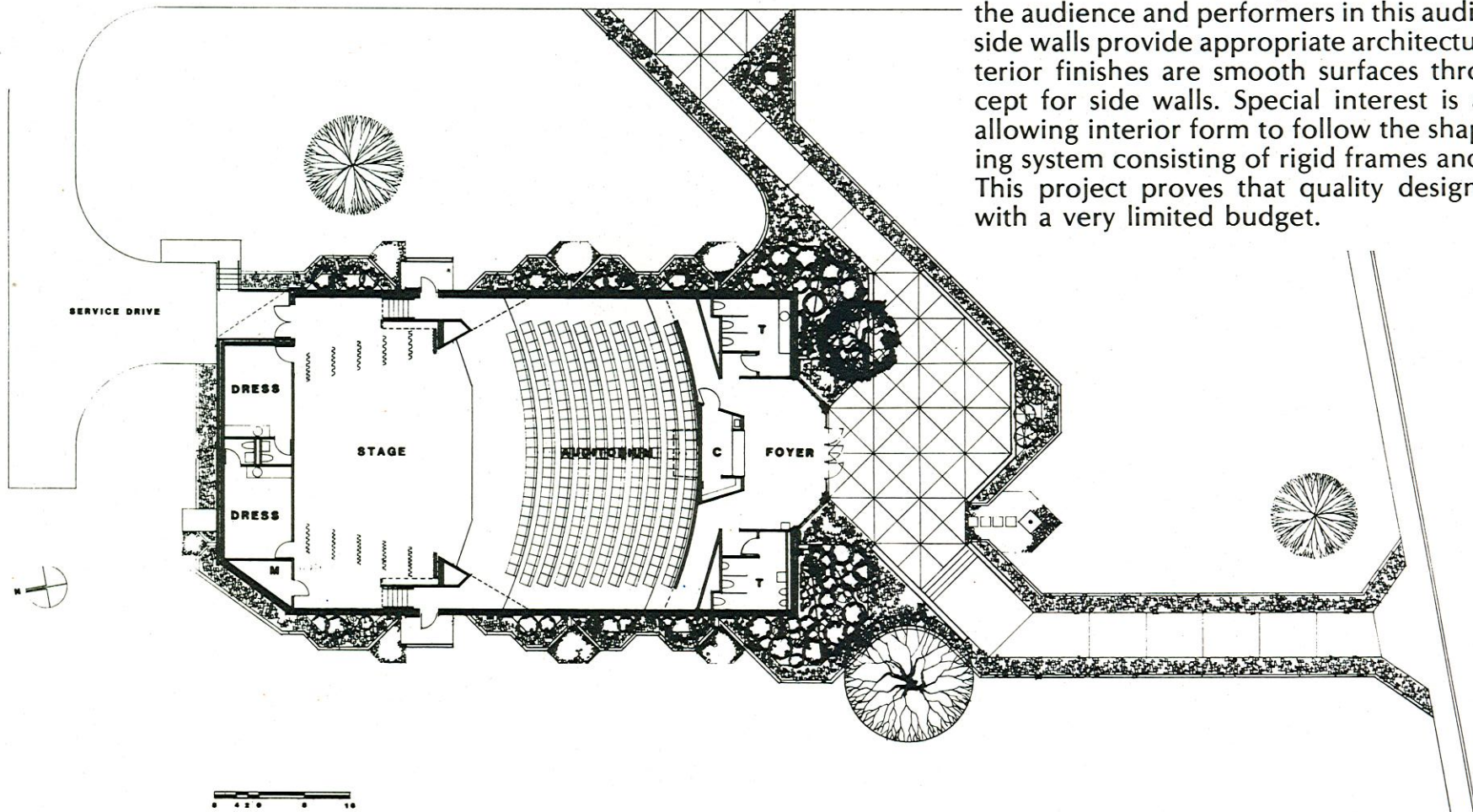
Administrative Unit Tyrrell County
 Superintendent David E. Davis
 Grade Organization 7-12
 Approximate Capacity 270 permanent seats/30 portable
 Square Footage 5,900 sq. ft.
 Opening Date October 5, 1980
 Architects Stephens & Cardelli
 Structural Engineers George K. Coffin & Associates
 Mechanical and
 Electrical Engineers Buffaloe, Morgan & Associates

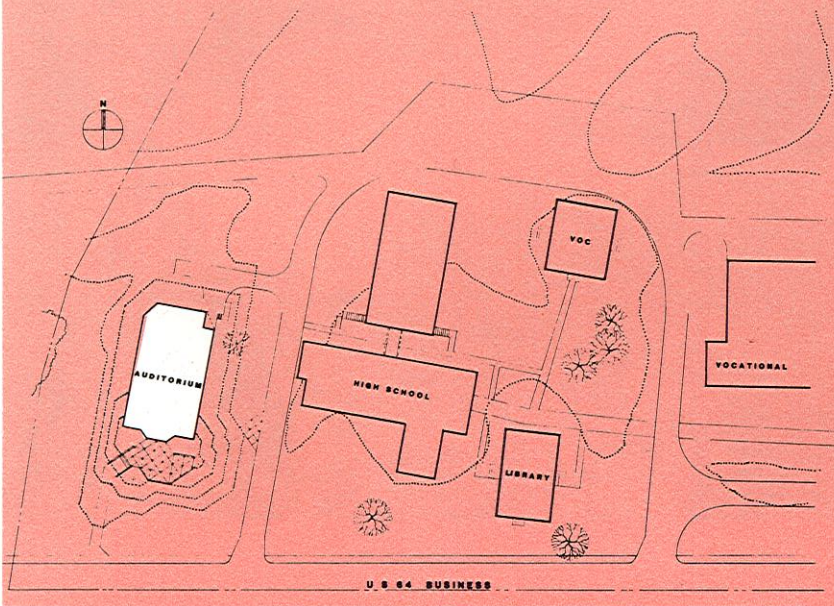
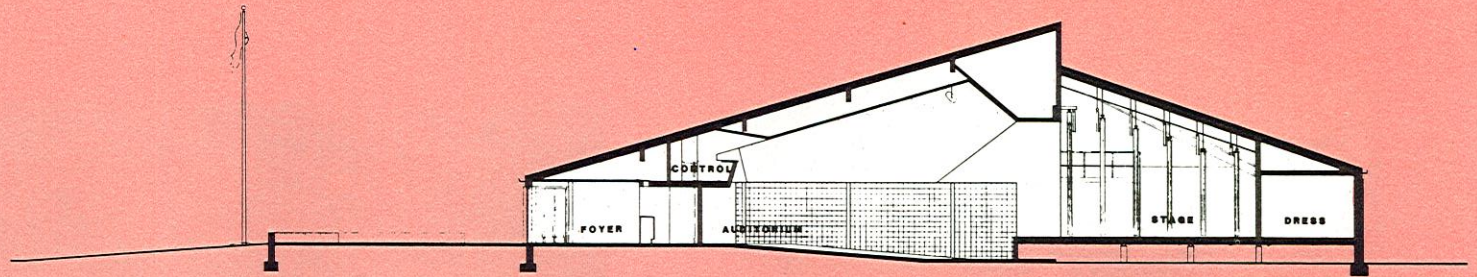
Persistence was the key to the successful design and completion of Columbia High School Auditorium. Sometimes the combination of a low construction budget and high expectations requires a reduced seating capacity and a different seating configuration. Continental seating creates intimacy between the audience and performers in this auditorium. Low side walls provide appropriate architectural scale. Interior finishes are smooth surfaces throughout except for side walls. Special interest is achieved by allowing interior form to follow the shape of a roofing system consisting of rigid frames and steel joists. This project proves that quality design is possible with a very limited budget.



Administrative Unit Tyrrell County
 Superintendent David E. Davis
 Grade Organization 7-12
 Approximate Capacity 270 permanent seats/30 portable
 Square Footage 5,900 sq. ft.
 Opening Date October 5, 1980
 Architects Stephens & Cardelli
 Structural Engineers George K. Coffin & Associates
 Mechanical and
 Electrical Engineers Buffaloe, Morgan & Associates

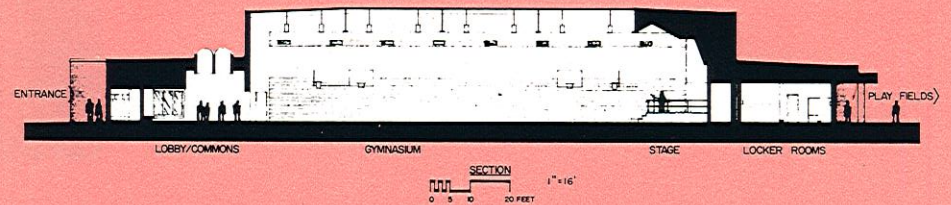
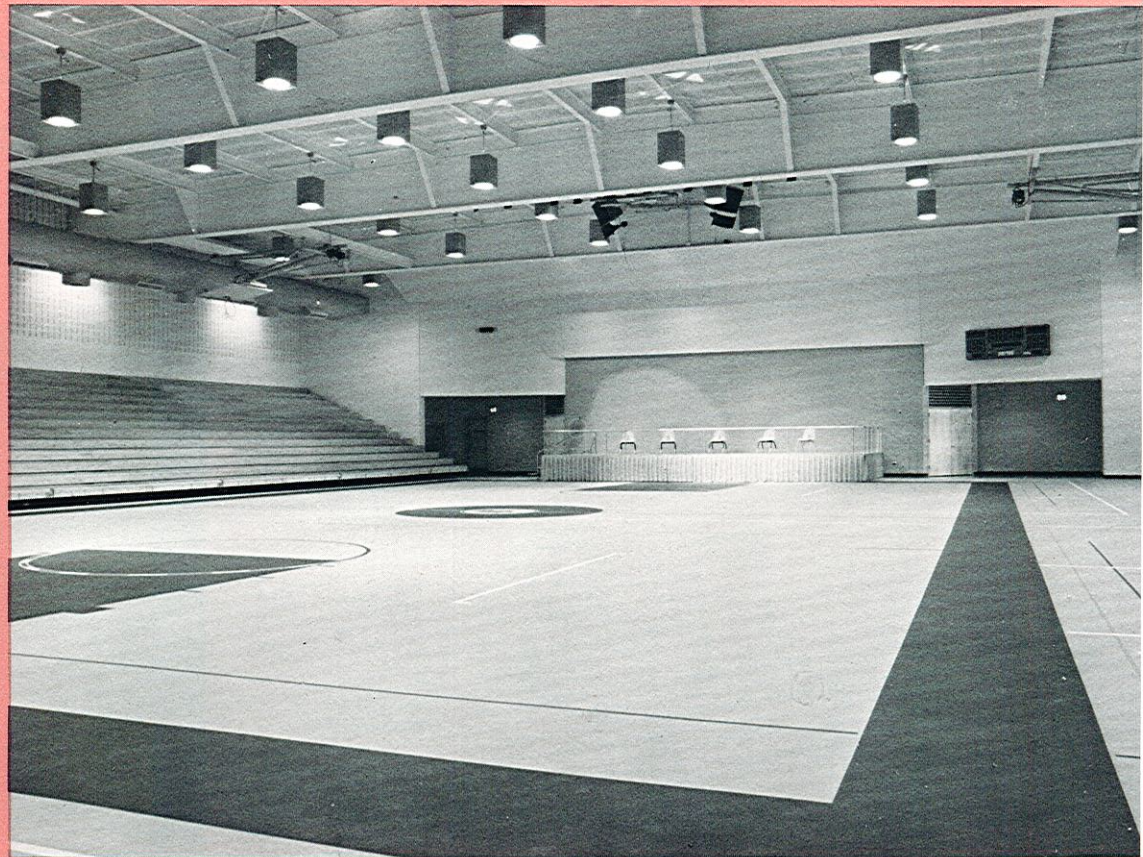
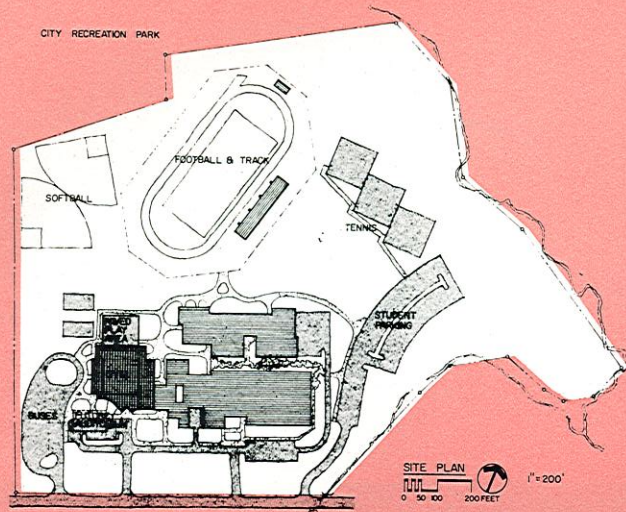
Persistence was the key to the successful design and completion of Columbia High School Auditorium. Sometimes the combination of a low construction budget and high expectations requires a reduced seating capacity and a different seating configuration. Continental seating creates intimacy between the audience and performers in this auditorium. Low side walls provide appropriate architectural scale. Interior finishes are smooth surfaces throughout except for side walls. Special interest is achieved by allowing interior form to follow the shape of a roofing system consisting of rigid frames and steel joists. This project proves that quality design is possible with a very limited budget.

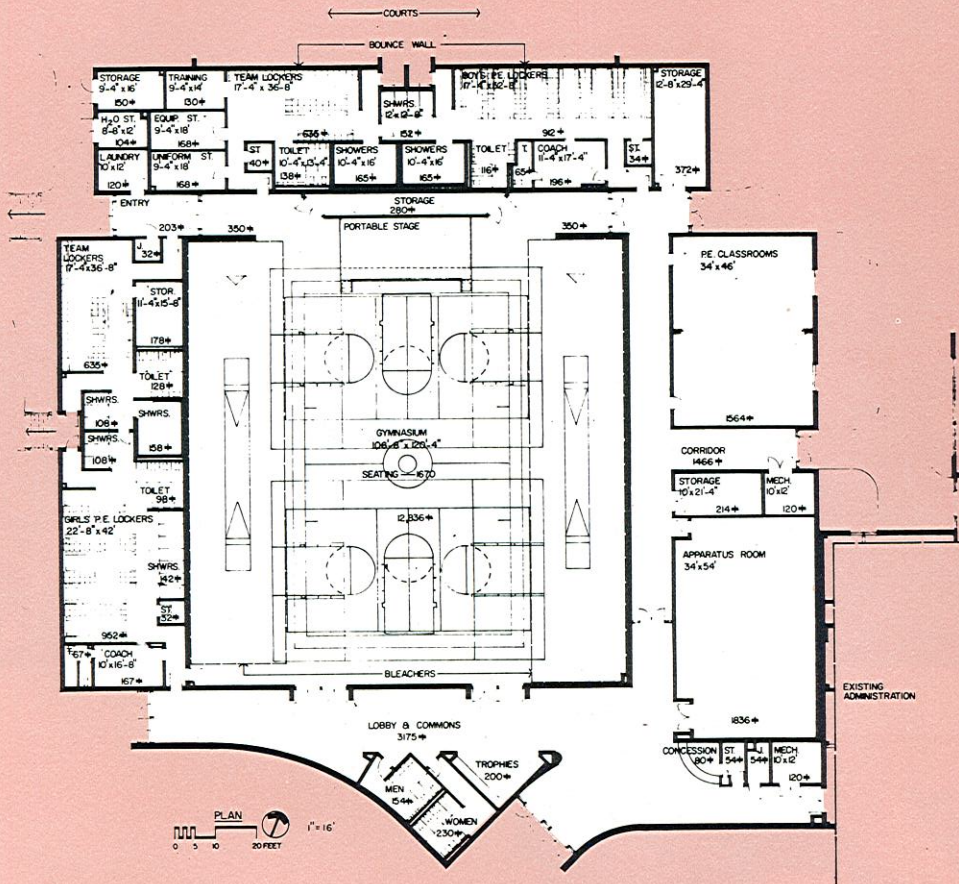




21

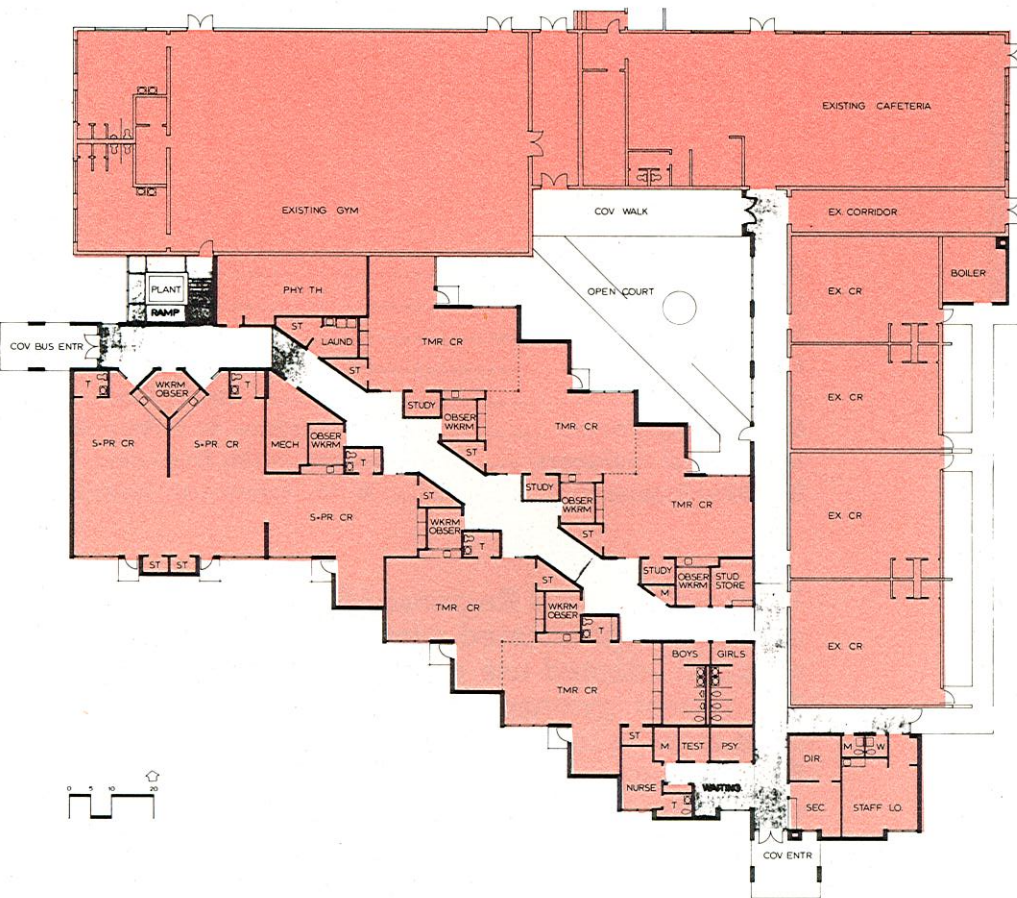
TARBORO HIGH





Administrative Unit Tarboro City
 Superintendent Philip L. Beaman
 Grade Organization 9-12
 Approximate Capacity 1,670 seats (950 pupils)
 Square Footage 31,647 sq. ft.
 Opening Date July 18, 1979
 Architects Polier, Ballard, Associates
 Structural Engineers Bigger & Agnew, Inc.
 Mechanical and
 Electrical Engineers Buffaloe, Morgan & Associates, Inc.

The photograph indicates that large spaces such as gymnasiums are enhanced by direct expression of a simple structural concept. In this large room, plate girders and steel beams result in an uncluttered interior. The major design problem of gymnasium sound attenuation is solved by means of an exposed sound absorbent roof deck and slotted concrete block side walls. High intensity discharge lighting contributes to the simple design. Seamless synthetic flooring makes maintenance easier. Well-organized dressing rooms and auxilliary facilities augment a carefully designed athletic arena.



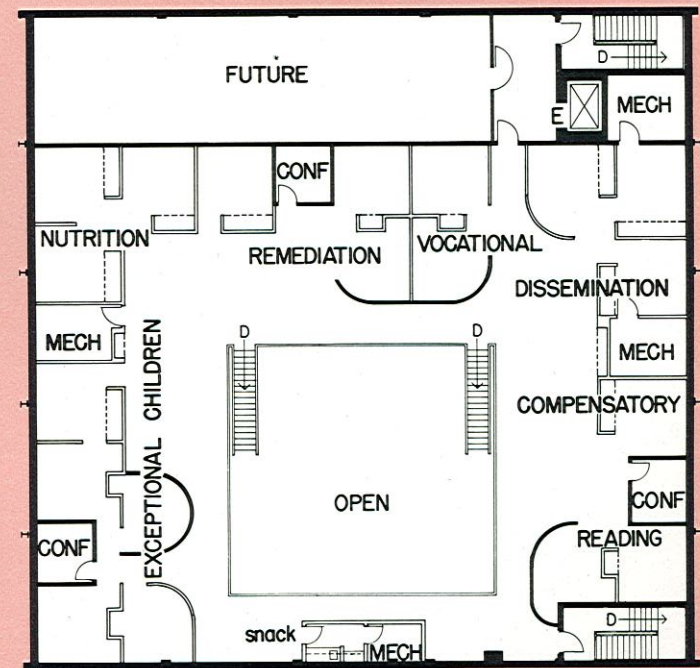
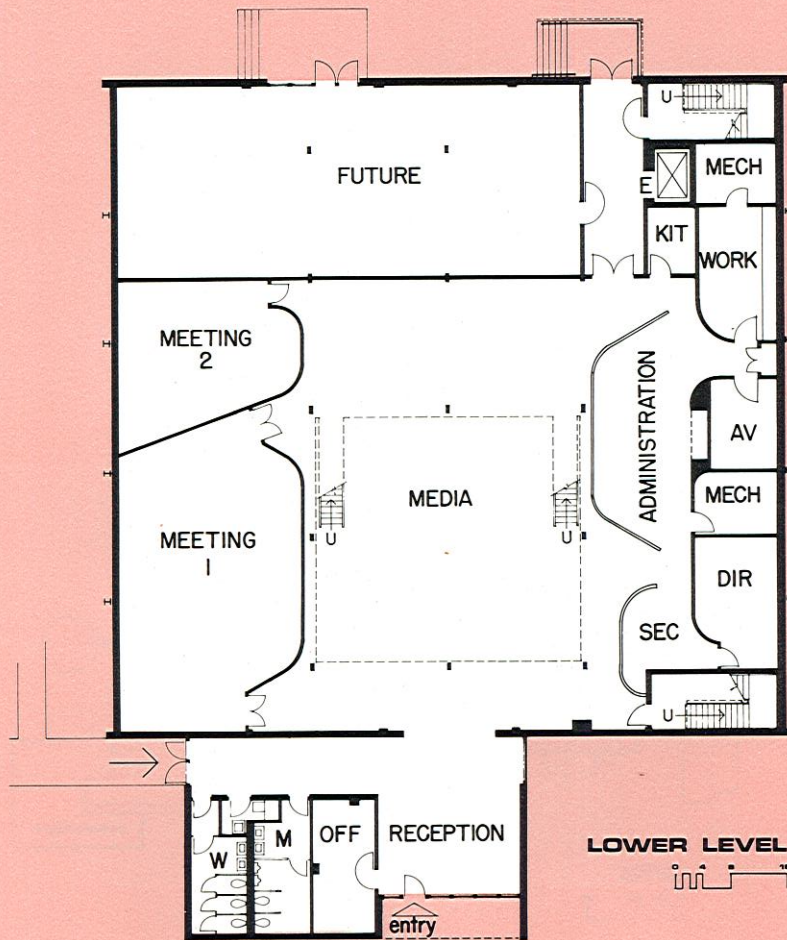
Administrative Unit Newton-Conover City
Superintendent N. S. Cranford
Grade Organization Upgraded Special Education
Approximate Capacity 125
Square Footage 15,000 sq. ft.
Opening Date April, 1980
Architects Wm. P. Reinhardt/Robert L. Smith
Structural Engineers Wm. P. Reinhardt/Robert L. Smith
Mechanical and Electrical Engineers McDermott, Canaday, & Little

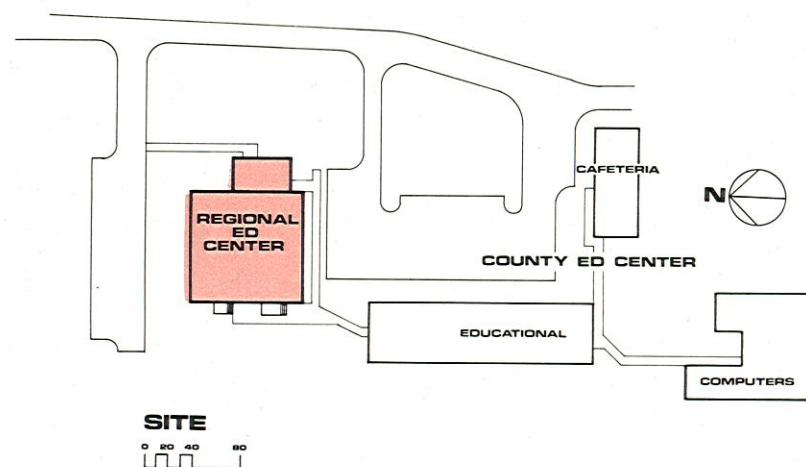
This is an ungraded special education center for Catawba County. The architect's research revealed the need for handrails in the corridor, lever-action door handles, radiused corners at masonry walls, and recessed cabinets and cabinet hardware in order to minimize injury. Classroom entrances are pocketed so that retarded children will be spatially cued. Classrooms are divided into learning activity areas. Teacher work rooms have one-way glass for parent and teacher observation of pupils. Color graphics are used throughout as part of the special identification system.



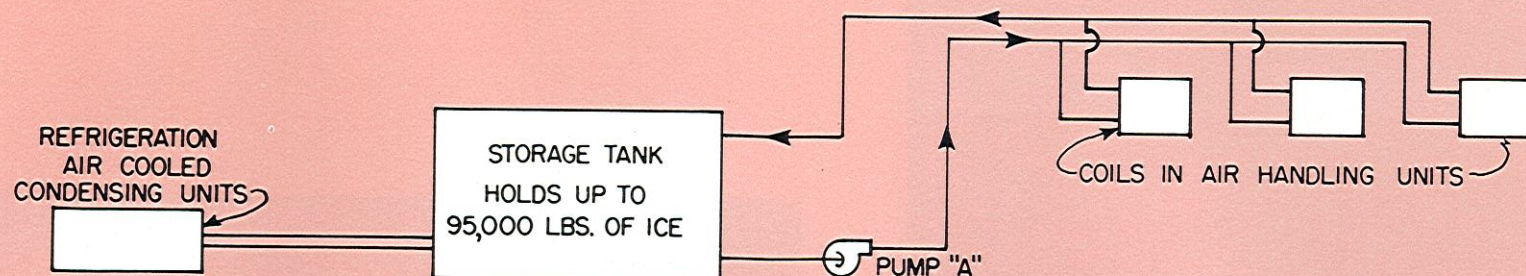
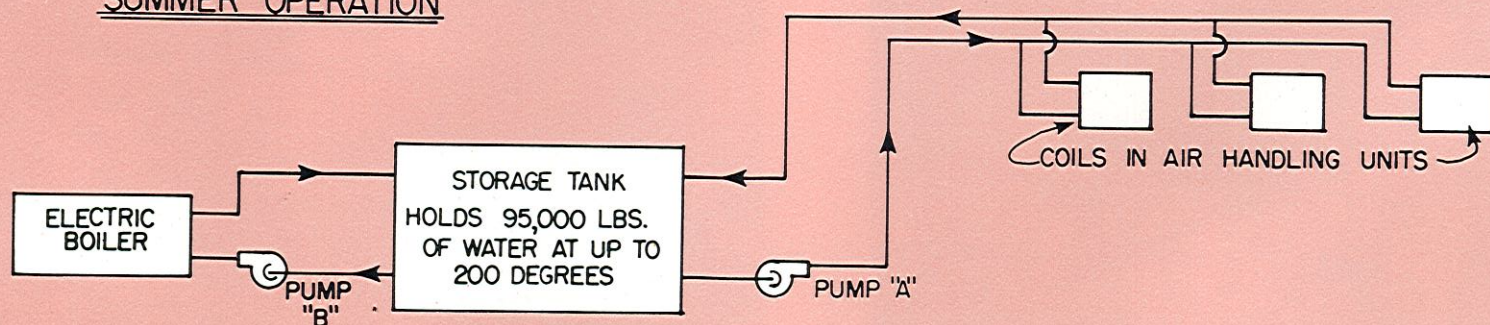
Administrative Unit **Moore County**
Director **Gladys Britt**
Square Footage **15,500 sq. ft.**
Opening Date **December, 1979**
Architects **Austin Associates**
Structural Engineers **W. H. Gardner, Jr. & Associates**
Mechanical Engineers **McKnight-Smith Engineers, Inc.**
Electrical Engineers **K. M. Armstrong Associates**

The South Central Regional Education Center is an unusually sophisticated approach to a design which required adapted use of an existing school facility. The former gymnasium, with its high volume and clear spans, is used as an envelope in which walls and floors are arranged without the structural restraint of supporting the roof. All elements of the building are honestly expressed. More school renovations and remodeling should reflect similar bold approaches to adaptive design. The Moore County School system was instrumental in providing support for this project.







SUMMER OPERATIONWINTER OPERATION

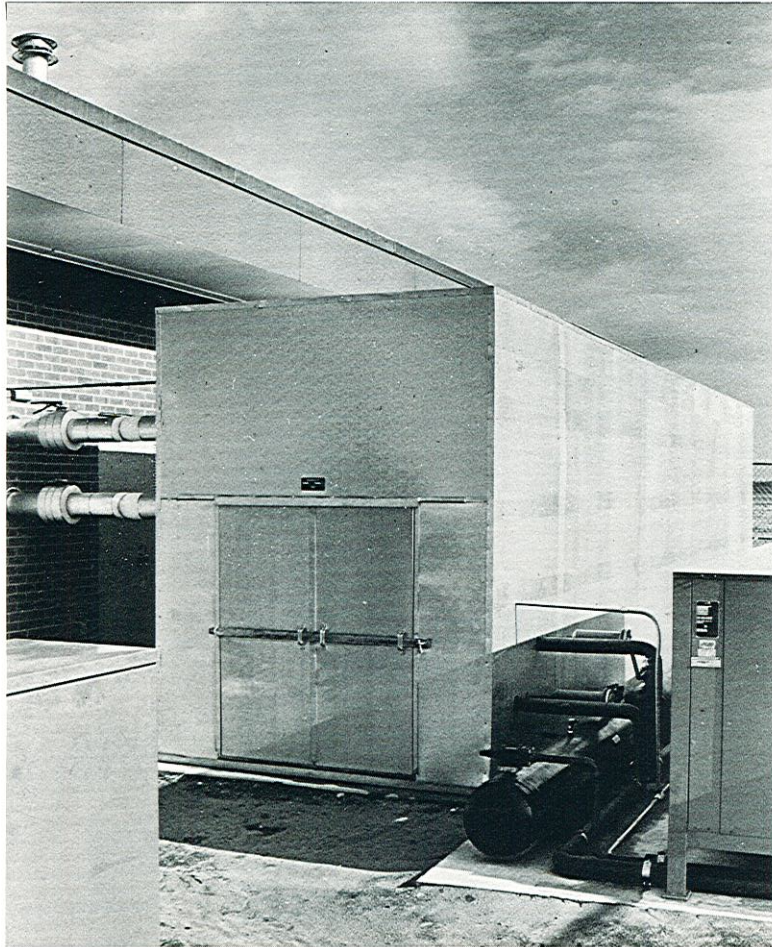
OTHER SCHOOLS THAT HAVE THERMAL STORAGE

Ashe County Career Center, Ashe County; Wilbur, Kendrick, Workman and Warren, Engineer and Architect

South Davie Junior High School, Davie County; Wilbur, Kendrick, Workman and Warren, Engineer and Architect

Nash Central Junior High School, Nash County; Fenner and Proffitt, Engineer; Dove-Knight Associates, Architect

North Nash Junior High School, Nash County; Proposed but not yet under contract; Fenner and Proffitt, Engineer; Dove-Knight Associates, Architect

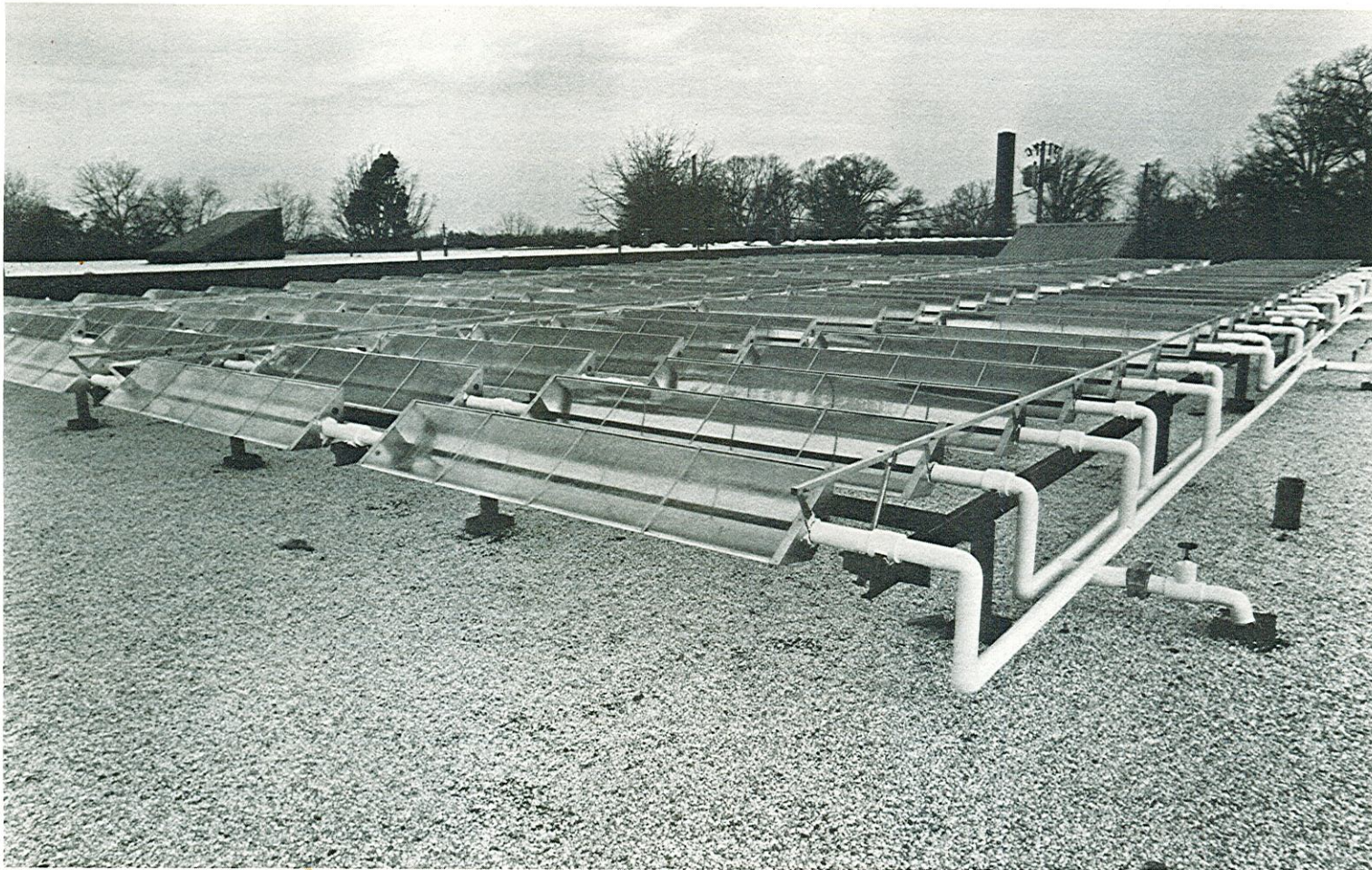


Engineer. Fenner & Proffitt, Inc.

Architect. . . . Ballard, McKim and Sawyer

Heating and cooling for this school is done by air handling units which are supplied either hot water, for heating, or chilled water, for cooling. The unique feature of this HVAC system is thermal storage. The outdoor storage tank is a manufactured unit that can hold 95,000 pounds of water at 200 degrees or 95,000 pounds of ice. Thermal storage was chosen for the system for the purpose of substantially reducing the demand cost factor in electrical billing. Both heating and cooling (ice making) are done with electrical energy. The thermal storage feature allows equipment and machinery to be operated at off-peak times when other electrical loads are off (unoccupied school hours). For each kilowatt hour of demand reduced, savings are more than \$5.00. A 50 kilowatt hour demand reduction saves more than \$250.00 on a monthly billing. Since the highest demand rate factor applies for each month of a given 12-month billing period, this storage system has the potential of contributing greatly to the reduction of electrical billing cost.

It is interesting to observe that the engineer chose to store ice rather than just chilled water. The reason is that the heat of fusion for ice (changing water to ice) is considerable, and thereby the "cold" stored in the tank is increased in great measure.



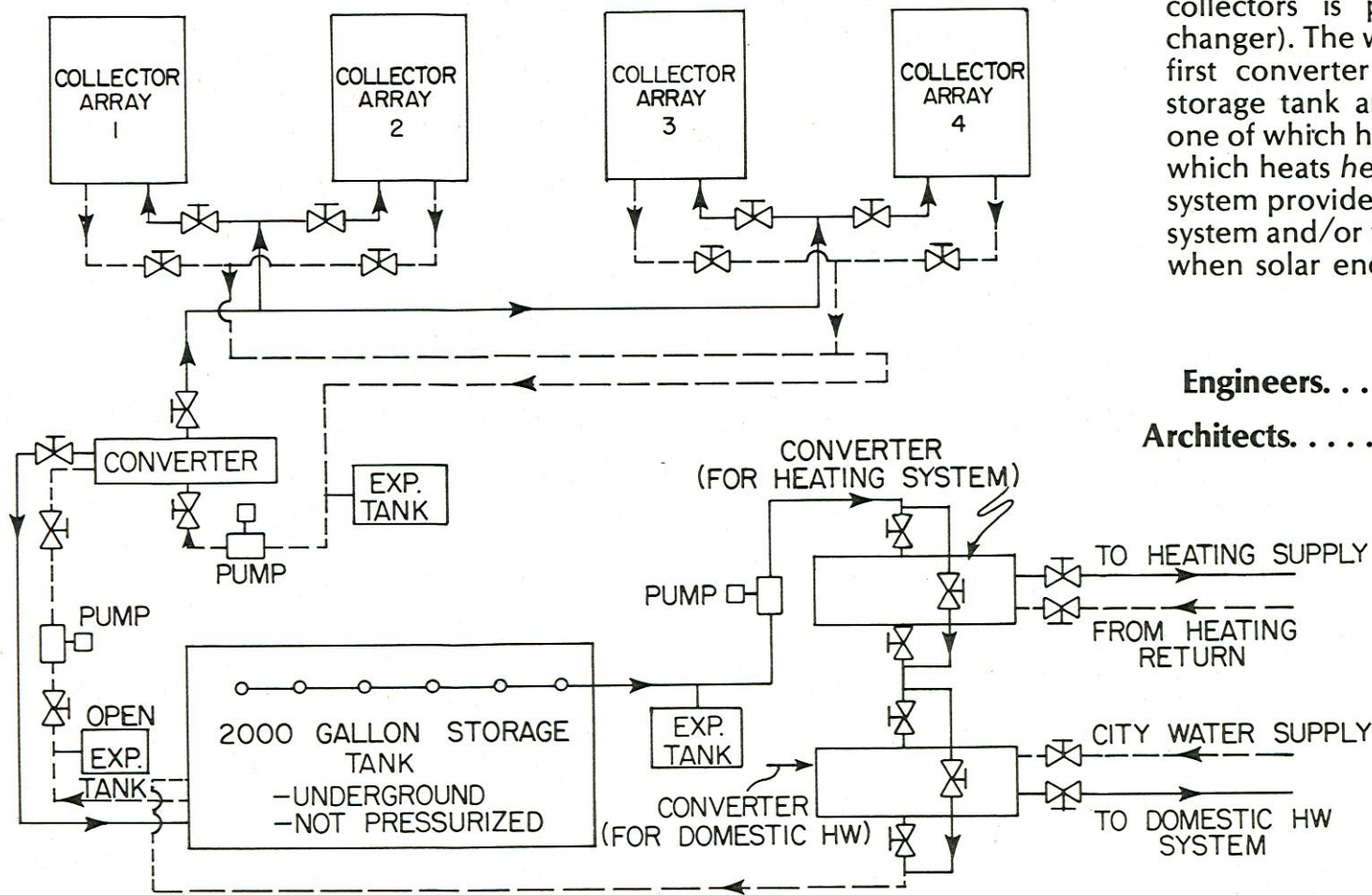
OTHERS SCHOOLS THAT HAVE ACTIVE SOLAR SYSTEMS

North Drive Elementary School, Goldsboro; Fenner and Proffitt, Engineer; Griffin-Flynn, Architect

Southwestern Technical Institute, Jackson County; Reece, Noland and McElrath, Engineer; Foy and Lee, Architect

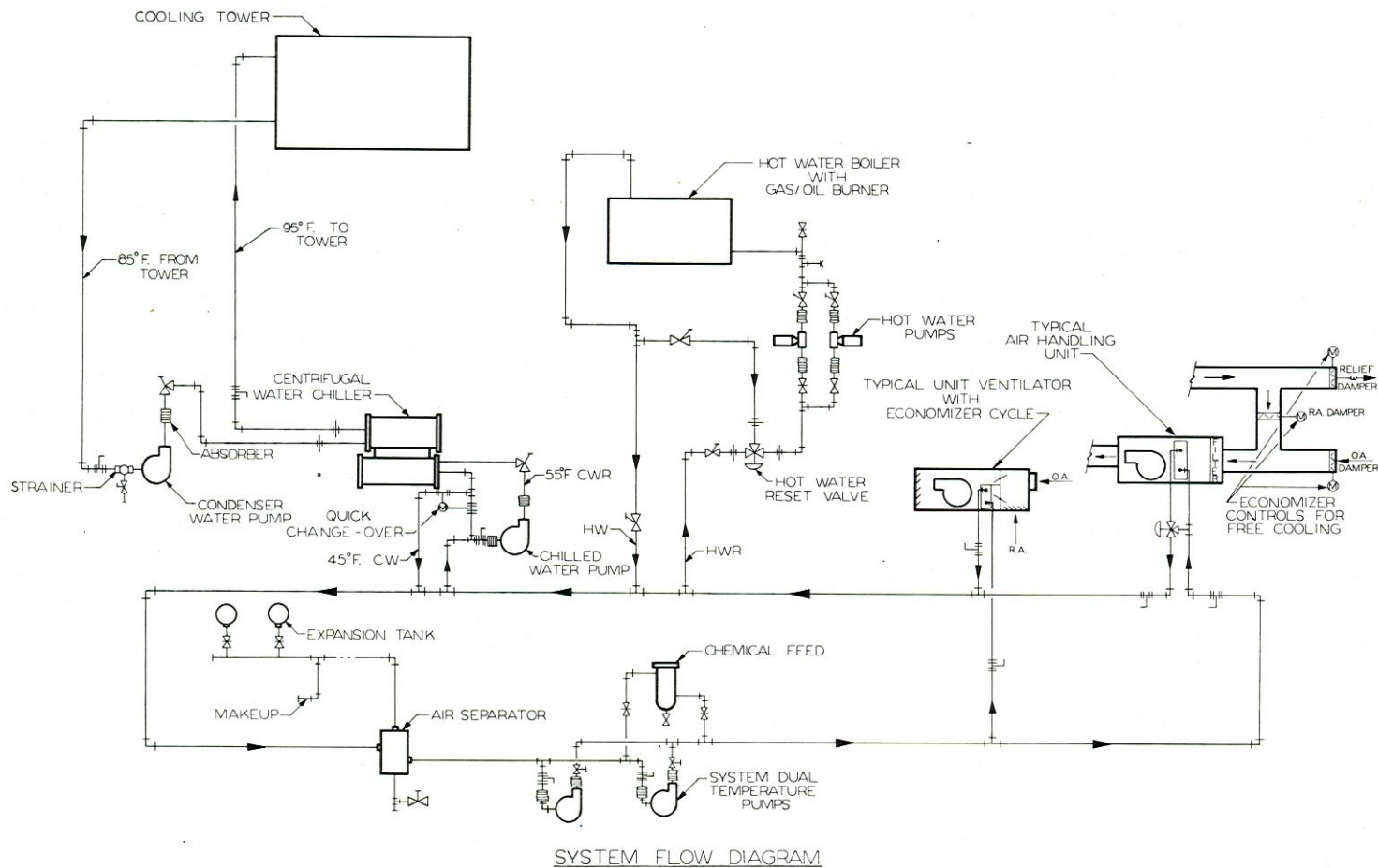
SOLAR HEATING SYSTEM

This solar heating system consists of 120 roof-mounted collectors set in four arrays. These concentrating collectors are the focusing type that effect maximum heat pick-up. Heated water from the collectors is pumped to a converter (heat exchanger). The water heated by collector water in this first converter is then pumped to a 2,000-gallon storage tank and on to two additional converters, one of which heats *domestic hot water* and the other which heats *heating system water*. The solar heating system provides assistance to the domestic hot water system and/or the building hot water heating system when solar energy is available.



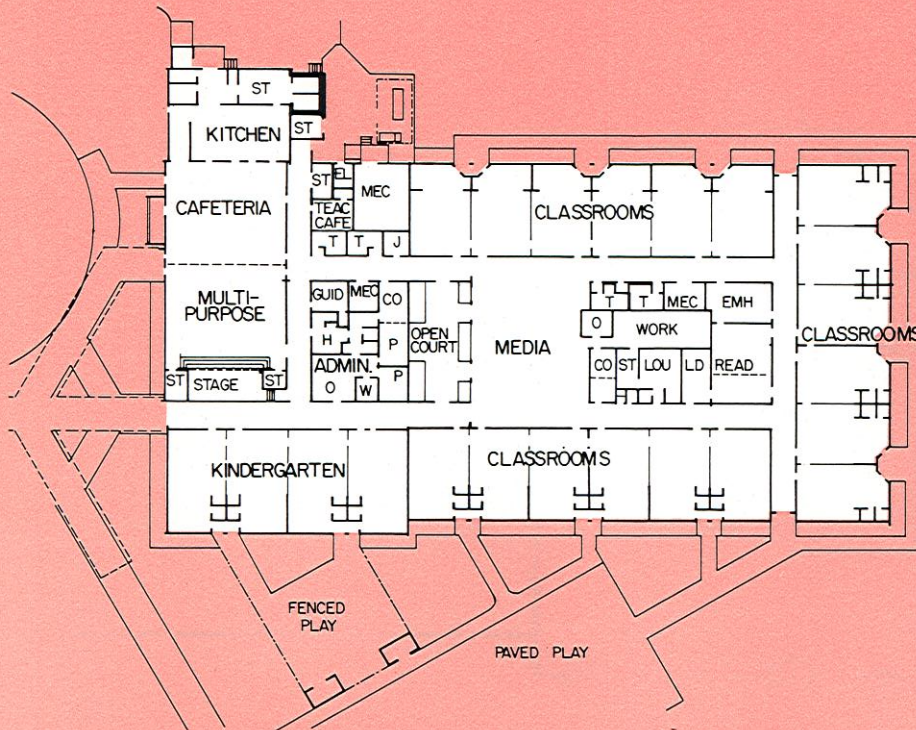
Engineers. McMichael, McCracken

Architects. Hayes, Howell & Associates



Engineers Mechanical Engineers, Inc.

Architect J. L. Beam



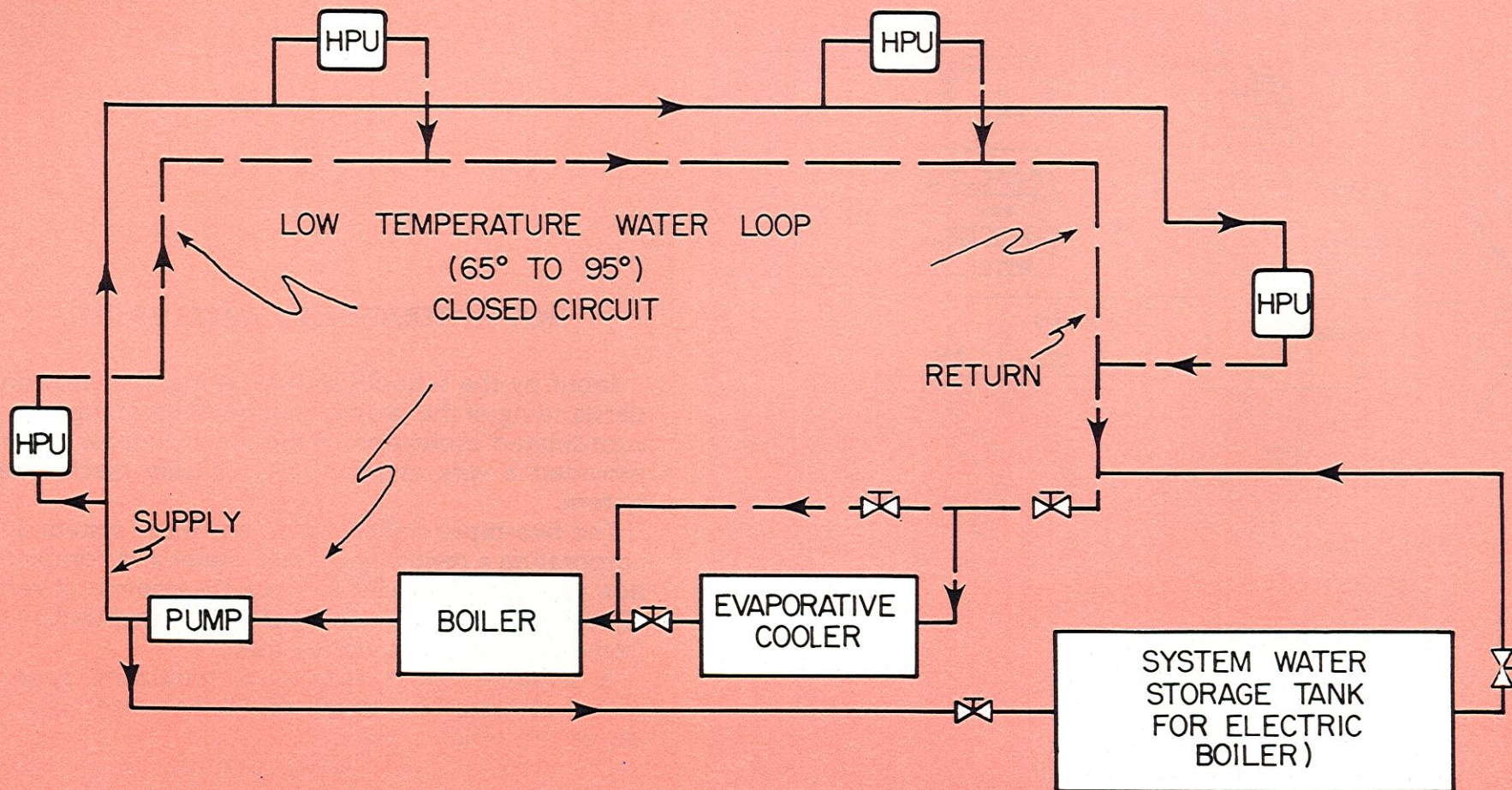
HOT WATER/CHILLED WATER SYSTEM

Input by the school's staff resulting in a clear understanding of the project requirements along with a coordinated evaluation of the life cycle cost factors provided a very efficient, high quality mechanical system.

The two-pipe, chilled water/hot water system, incorporating a centrifugal water chiller and combination gas/oil fired boiler to serve classroom unit ventilators, provides a mechanical system that ranks extremely low in total energy use.

A separate direct expansion, multizone system with hot water heating and "economizer cycle" serves the office areas.

The system is adaptable to future active solar energy supplement due to the relatively low hot water design temperature.



TYPICAL HYDRONIC HEAT PUMP SYSTEM

Each heat pump unit (HPU) takes the delivered system water and either heats or cools with it at any given time.

Water in the pipe loop travels through both the boiler and the cooler constantly, but one of these is on and one is off all the time (or both may be off). The boiler adds heat to the water or the cooler takes it away to maintain the loop water temperature. The cooler can be bypassed for draining to prevent freezing. The tank can store water (and heat), from the electric boiler, to help control the demand rate factor or to use a time-of-day electric rate.

This type of system conserves energy by transferring heat from one part of a building to another, that is, from a warmer area to a colder area. Also, the system can easily utilize solar heating if desired by the addition of appropriate equipment.

PARTIAL LIST OF SCHOOLS THAT HAVE HYDRONIC HEAT PUMP SYSTEMS

Harnett Central High School and Western Harnett High School, Harnett County; Steuer and Cheatham, Engineer; Leslie N. Boney, Architect

Westover Senior High School, Cumberland County; Fenner and Proffitt, Engineer; Mason Hicks, Architect

Clemmons Elementary School and Old Richmond Elementary School, Winston-Salem/Forsyth County; Consultant Engineering Service, Engineer; Fred W. Butner and Associates, Architect

Sedge Garden Elementary School and South Fork Elementary School, Winston-Salem/Forsyth County; Consultant Engineering Service, Engineer; Newman, Calloway, Johnson, VanEtten and Winfree, Architect

North Lenoir High School and South Lenoir High School, Lenoir County; Steuer and Cheatham, Engineer; Leslie N. Boney, Architect

Kinston High School, Kinston; Steuer and Cheatham, Engineer; Leslie N. Boney, Architect

Carrboro Elementary School, Estes Hills Elementary and Glenwood Elementary, Chapel Hill-Carrboro; Douglas Y. Perry and Associates, Engineer

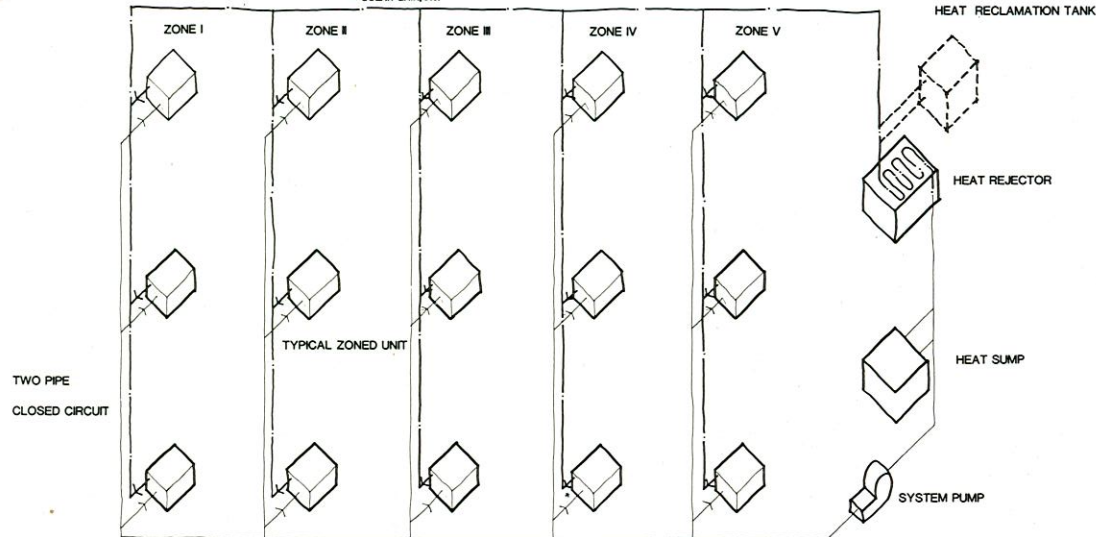
Laney High School, New Hanover County; Steuer and Cheatham, Engineer; Leslie N. Boney, Architect

Reidsville Junior High School, Reidsville; Douglas Y. Perry and Associates, Engineer, Haskins and Rice, Architect

East Wake County High School, Wake County; Douglas Y. Perry and Associates, Engineer; Haskins and Rice, Architect

HEAT RECOVERY SYSTEM

1. RECLAIMS HEAT FROM:
- INHABITANTS
 - BUILDING MASS
 - LIGHTS & EQUIPMENT
 - SOLAR GAIN, etc.



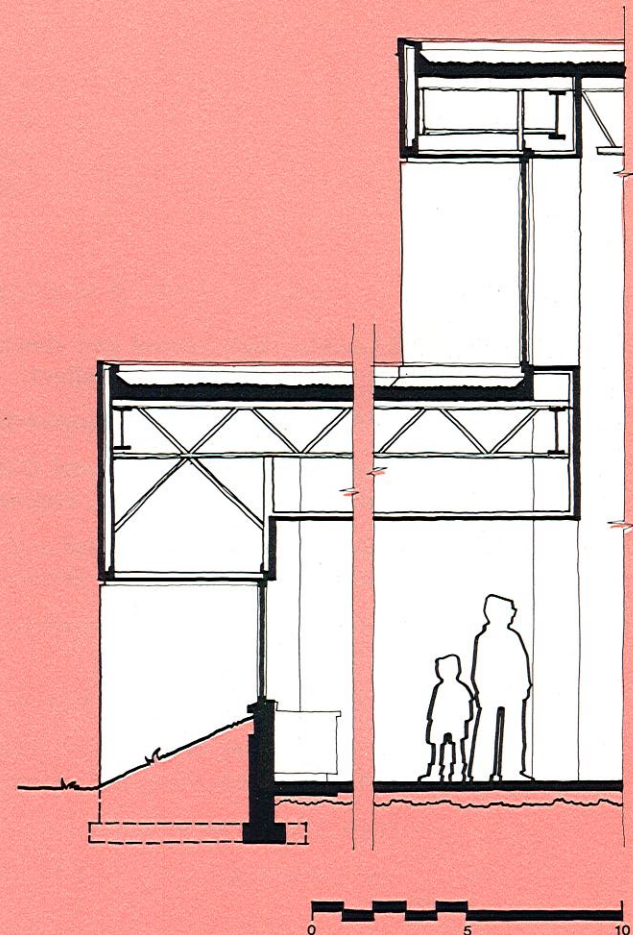
2. REDISTRIBUTES EXCESS HEAT FROM ONE ZONE
TO ANOTHER ZONE UNIT REQUIRING HEAT.

3. DOES NOT REQUIRE HEAT FROM HEAT SUMP UNTIL EXTERIOR TEMPERATURE
IS BELOW APPROXIMATELY 45 DEGREES F.

SUPPLEMENTARY HEAT SUMP USING OFF PEAK
ELECTRICITY AT LOW ELECTRIC DEMAND RATES
TO STORE HEAT.

THIS DIAGRAM IS NOT REPRESENTING THE TOTAL NUMBER OF ZONES
NOR THE NUMBER OF UNITS IN EACH ZONE

Architects and Engineers Six Associates, Inc.
Mechanical Engineer. James M. Lorick, P. E.



DIVISION OF SCHOOL PLANNING

School boards expect quality design. Generally boards and administrators are proud of an extraordinary design effort. They recognize the value of an artistically conceived building environment. Although it is impossible to prove and difficult to measure, a well-designed school environment contributes a great deal to the positive attitude of children and teachers. Over-designed and thoughtlessly-designed schools can interfere with good educational programs. The job of designers is to create an extraordinary ambience, one in which children and teachers feel comfortable and in which they feel like "somebody." That is their most important task.

Of course, housing the children, staff, and program is the practical purpose of building school facilities. But that is seldom all that is expected of designers, especially for new schools. Attending to the spirit of design is essential because schools are the only other place where young citizens are confined by law. Most adults can modify or escape a mediocre environment at will. School children do not have that option.

More than ever, quality design is needed in this era of public school development. Designers and school people should follow their best impulses. A better time will never come. There will never be funds without limitation for education and schools or a right time for the dream project. Each new school design project is a unique opportunity to transcend the ordinary.

June, 1981

Charles Reed, Jr.

THIS PUBLICATION WAS WRITTEN AND PREPARED BY THESE PEOPLE :

CHARLES REED, Jr.	ARCHITECT
ROLF W. SEIFERT	ARCHITECT
GERALD H. KNOTT	ARCHITECT
N. K. LEE	MECHANICAL ENGINEER
DEBORAH L. DAVIS	DRAFTING TECHNICIAN
DONNA MOYE	SECRETARY

WILLIAM W. ESTES ELEMENTARY

