

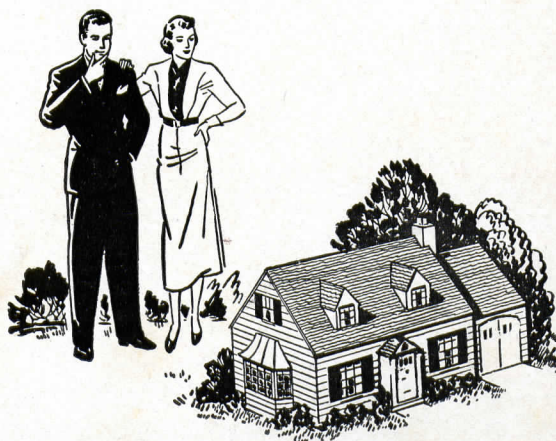
HOUSES *by* COFFEY



HOUSES

by

COFFEY



THIS BOOKLET

DESIGNED BY CAPITAL PRINTING COMPANY, RALEIGH

PHOTOGRAPHS BY DENMARK STUDIOS, RALEIGH

ENGRAVINGS BY STEARNS ENGRAVING COMPANY, RALEIGH

PRINTING BY CAPITAL PRINTING COMPANY, RALEIGH

foreword . . .

For many years the name COFFEY has been closely associated with the building industry in Raleigh and vicinity. During the past few years it has been the privilege of John W. Coffey and Son, in cooperation with the sub-contractors listed herein, to build many homes in Raleigh; homes that represent different types of architecture, types of construction, style and beauty. In view of the advancement of the nation-wide building programme and desiring to be of helpful service to the many home-builders, who during the fall of 1938 and the years 1939 and 1940 will construct homes, we respectfully submit this booklet with the idea that it may offer helpful suggestions to you. Feel free to call upon John W. Coffey and Son, or any of the sub-contractors; they will gladly assist you with your building problems.

HOUSES
by
COFFEY

The following Sub-Contractors assisted in the building and erection of the homes illustrated in this book. Plan to build today. Any of the following concerns will gladly assist you in securing the information you desire.

DAVID G. ALLEN, Raleigh	Tiles and Marbles
<i>Page Forty-four</i>	
ANDERSON ELECTRIC Co., Charlotte	Electrical Fixtures
<i>Page Forty-four</i>	
JOHN ASKEW, Raleigh	Painting
<i>Page Twenty</i>	
C. R. BOONE, Raleigh	Stone
<i>Page Forty-eight</i>	
T. H. BRIGGS & SONS, INC., Raleigh	Hardware
<i>Page Forty</i>	
A. H. BYRUM, Raleigh	Lumber and Building Material
<i>Page Thirty-two</i>	
BURKE-GOLDSTON LUMBER Co., Raleigh	Rough and Finished Lumber
<i>Page Sixty-six</i>	
CAROLINA BUILDERS CORP., Raleigh	Lumber and Building Material
<i>Page Forty-eight</i>	
CAROLINA POWER & LIGHT Co., Raleigh	Electrical Energy
<i>Page Forty</i>	
CHEROKEE BRICK Co., Raleigh	Brick
<i>Page Sixty</i>	
CLARK ART SHOP, Raleigh	Awnings and Venetian Blinds
<i>Page Fifty-two</i>	
DILLON SUPPLY Co., Raleigh	Rock Lath, Lime, Plaster, Cement and Nails
<i>Page Sixty-six</i>	
E. E. DUNCAN, Raleigh	Financing—F.H.A. Loans
<i>Page Fifty-six</i>	
C. E. FEREBEE, Raleigh	Mason Contractor
<i>Page Twenty-eight</i>	
W. P. FINCH, Raleigh	Floors
<i>Page Seventy-two</i>	
GENERAL ELECTRIC AIR CONDITIONING, Raleigh	Home Insulation
<i>Page Twenty</i>	
M. L. MARTIN, Raleigh	Concrete
<i>Page Seventy-two</i>	
MUTUAL INSURANCE AGENCY, Raleigh	Insurance
<i>Page Thirty-six</i>	
B. F. McCLAMROCH, Raleigh	Tile, Marble and Terrazzo
<i>Page Thirty-two</i>	
JOHN H. PHELPS, Raleigh	Electrician
<i>Page Twenty-four</i>	
RALEIGH FURNITURE Co., Raleigh	Linoleum and Rubber Tile
<i>Page Fifty-two</i>	
SANFORD SASH & BLIND Co., Sanford	Millwork
<i>Page Sixteen</i>	
THURSTON-SIPLE, Raleigh	Plastering
<i>Page Twenty-eight</i>	
STANDARD OIL Co., Raleigh	Oil Heating
<i>Page Eight</i>	
THOMPSON ELECTRICAL Co., Raleigh	Electrical Fixtures
<i>Page Thirty-six</i>	
TRULL PLUMBING & HEATING Co., Raleigh	Plumbing, Heating and Air Conditioning
<i>Page Twenty-four</i>	
VICKERS & RUTH, Raleigh	Plumbing and Heating
<i>Page Twelve</i>	
J. F. WILLIS, Raleigh	Sheet Metal Works
<i>Page Sixty</i>	
J. A. WOOD FURNITURE Co., Raleigh	Furniture
<i>Page Fifty-six</i>	



Colonial--Brick Veneer

J. W. Coffey & Son, Contractors

T. W. Cooper, Architect

Residence of D. F. Cannon

Cor. Beechridge Road and White Oak Road

CONCRETE FOUNDATION . . . selected common brick in basement and veneer walls . . . No. 1 N. C. pine framing and sheathing . . . Panderosa white pine millwork . . . clear plain white oak floors . . . knotty pine den . . . Hood tile roof . . . copper sheet metal work . . . brick porches and terraces . . . rubber tile floors in kitchen, serving pantry and breakfast room . . . baths in tile, rubber tile and Vitrolite glass . . . Standard and Kohler plumbing fixtures by Vickers and Ruth, Raleigh . . . Lennox air conditioned system of heating . . . Sargent hardware . . . lighting fixtures by owner . . . aluminum screens . . . weatherstripped . . . wallpapered, stained and enamel interior finish . . . Texolite ceilings . . . exterior paint lead and oil . . . brickwork painted with Medusa white.

HOUSES
by
COFFEY



Georgian Brick Veneer

J. W. Coffey & Son, Contractors

James A. Salter, Architect

Robert I. Lee, Owner

1123 Harvey Street

CONCRETE FOUNDATION and terraces . . . selected common brick veneer mixed with native Wake County stone . . . No. 1 N. C. pine framing and sheathing . . . northern fir millwork . . . clear plain red oak floors . . . sand-finished plaster on rock lath base . . . stone mantel and hearth . . . tile baths . . . Fenestra steel casements . . . Pennvernion D. S. A. glass . . . stain interior finish . . . exterior finish creosote stain . . . slate roof . . . galvanized iron sheet metal work . . . rock wool insulation . . . stucco and half timber . . . ornamental iron work . . . stone steps and walks . . . Quiet May burner with concealed vapor heat . . . Standard plumbing fixtures . . . Sargent hardware . . . lighting fixtures by Lightolier . . . weather stripped.

HOUSES
by
COFFEY



Modern Adaptation of Colonial

J. W. Coffey & Son, Contractors

J. M. Edwards, Jr., Architect

Residence of J. M. Edwards, Jr.

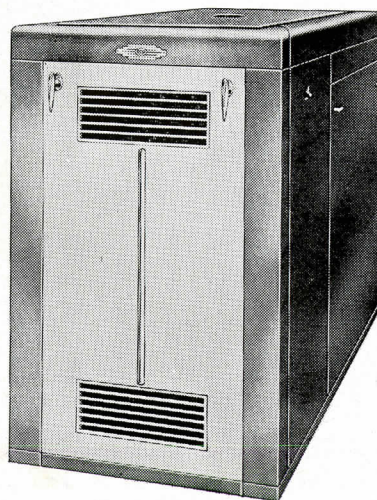
104 Montgomery Street

CONCRETE FOUNDATION . . . common brick basement and veneer walls . . . No. 1 N. C. pine framing and mill-work . . . asphalt composition roof . . . insulated with rockwool . . . select red oak floors . . . Linoleum in kitchens . . . tile floor and base in baths . . . smooth-finished plaster and rocklath base . . . interior paint flat and enamel . . . Texolite on ceilings . . . exterior paint lead and oil . . . exterior doors weatherstripped . . . Sargent hardware . . . Lighting fixtures by Anderson Electric and Supply Co., Charlotte . . . Standard plumbing fixtures by Vickers & Ruth, Raleigh . . . Fox winter air conditioned heating system with burner.

HOUSES
by
COFFEY

AUTOMATIC OIL HEATING UNITS DESIGNED TO FIT YOUR HOME!

COTTAGE or mansion, your house deserves a heating plant **THAT'S MADE TO FIT.** Enjoy the clean comfort and convenience of automatic oil heat with an Esso Warm Air Conditioner or Boiler Burner Unit. . . . The famous Essoburner is built in. There's a size for every house . . . a price for every pocket-book. Sold, guaranteed, installed, serviced and fueled by the world's leading oil organization—the makers of Essolene.



● Warm Air Conditioner. Clean, healthful air . . . plus fully automatic heat.

● Boiler Burner Unit. Complete oil heating unit and automatic hot water heater combined.

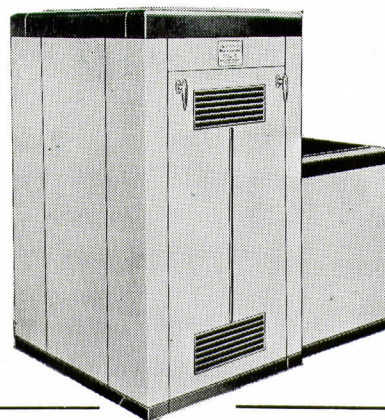
**THE OIL BURNING UNITS
WORTHY OF THE MARK...**



Automatic Fuel Oil Delivery



● **BUY ESSOHEAT** — The fuel oil as carefully refined as a quality lubricant. Available under automatic "Weather-Controlled" Delivery plan. Ask the Esso Marketers representative.



STANDARD OIL COMPANY OF NEW JERSEY

RALEIGH, N. C.

**ESSO MARKETERS
OIL HEATING DIVISION**

PHONE 26 or 822-W



Georgian Colonial -- Brick Veneer

J. W. Coffey & Son, Contractors

Nelson & Cooper, Architects

Resident of N. A. Dunn

1105 Cowper Drive

CONCRETE FOUNDATION and basement wall . . . face brick veneer with stone trim . . . No. 1 N. C. framing . . . Gyplap sheathing . . . white pine millwork . . . smooth plaster on rock lath base . . . Ludowici-Celedon moss green tile roof . . . all copper sheet metal work . . . tile baths and porch floors . . . ornamental iron by Peden . . . kitchen floor, rubber tile . . . Fenestra steel casements . . . Standard plumbing fixtures . . . National concealed vapor heat . . . Russwin hardware . . . lighting fixtures by Lightolier . . . exterior paint, lead and oil . . . interior paint, flat and Ripolin enamel . . . weather stripped . . . floors of white oak.

HOUSES
by
COFFEY



Georgian Colonial--Brick Veneer

J. W. Coffey & Son, Contractors

Atwood & Weeks, Architects

Residence of J. E. Evans

1002 Vance Street

CONCRETE FOUNDATION . . . common brick basement walls . . . buff face brick veneer . . . No. 1 N. C. pine framing and millwork . . . clear plain white oak floors . . . tile baths . . . green slate roof . . . galvanized iron sheet metal work . . . interior paint flat and enamel . . . exterior lead and oil . . . smooth plaster on rocklath base . . . National vapor heating system . . . Standard plumbing fixtures . . . Corbin hardware . . . Lightolier lighting fixtures.



Colonial Home of Brick Veneer

J. W. Coffey & Son, Contractors

Nelson & Cooper, Architects

Residence of J. A. Rand

Carr Street

CONCRETE FOUNDATION and basement . . . brick wall and veneer . . . Flemish Bond Precast sills and chimney caps . . . N. C. yellow pine and Gyplap sheathing . . . Millwork No. 1 N. C. yellow pine C. P. W. . . . oak floors . . . tile baths . . . rubber tile kitchen . . . plaster walls and cornices . . . slate roof . . . galvanized iron gutters and downspouts . . . brick porch floor . . . exterior paint, lead and oil . . . interior paint, flat and enamel . . . wallpaper . . . overhead garage doors . . . ornamental wrought iron rail . . . Standard plumbing fixtures . . . concealed heat . . . Kewanee boiler . . . copper tubing . . . lighting fixtures by Chase, New York City . . . weatherstrips . . . Millwork by Martin Millwork Co.

HOUSES
by
COFFEY

HENRY T. VICKERS

::

FRANK C. RUTH

Vickers & Ruth Plumbing and Heating Co.

Contracting

Alterations

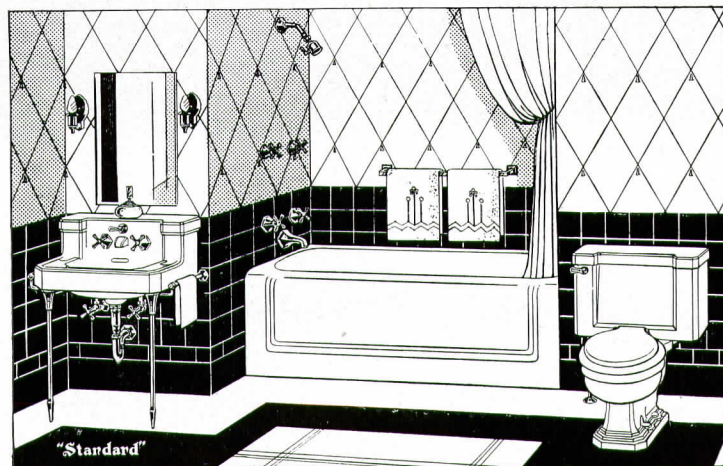
Installations

Repairing

PROMPT and EFFICIENT SERVICE

::

ALL WORK GUARANTEED



Petro Oil Burners

“COMBUSTIONEER” AUTOMATIC STOKERS

For HOMES, APARTMENTS and FACTORIES

Monthly Payments Arranged

• •

210 S. West St.

Phone 3684

RALEIGH, N. C.



Colonial--Brick Veneer

J. W. Coffey & Son, Contractors

W. H. Deitrick, Architect

Residence of Frank A. Daniels

1515 Glenwood Avenue

CONCRETE FOUNDATION . . . common brick basement and veneer walls . . . No. 1 N. C. pine framing and mill-work . . . select white oak floors . . . tile baths . . . slate roof . . . copper and galvanized iron sheet metal work . . . smooth plaster on rocklath base . . . interior paint flat and enamel . . . exterior lead and oil . . . Bay State white on brickwork . . . National concealed vapor heat with burner . . . Standard plumbing fixtures . . . Rockwool insulation . . . Russell-Erwin hardware . . . lighting fixtures . . . Linoleum floors in kitchen . . . exterior doors weatherstripped.

HOUSES
by
COFFEY



Colonial -- Brick Veneer

J. W. Coffey & Son, Contractors

James A. Salter, Architect

Residence of Rudolph Turk

Birdwood Farm—Off Wake Forest Road

CONCRETE FOUNDATION . . . common brick basement and veneer walls . . . No. 1 N. C. pine framing and mill-work . . . clear plain white oak floors . . . smooth-finished plaster on rocklath base . . . Ludowici-Celadon green tile roof . . . copper sheet metal work . . . tile baths . . . Tiletex floors in kitchen and breakfast room . . . Russell-Erwin hardware . . . Lightolier lighting fixtures . . . Standard plumbing fixtures by Vickers & Ruth, Raleigh . . . National concealed vapor heat . . . weatherstripped . . . interior paint flat and enamel . . . exterior lead and oil . . . Medusa white on brickwork . . . wallpapered.

HOUSES
by
COFFEY



Colonial--Brick Veneer

J. W. Coffey & Son, Contractors

T. W. Cooper, Architect

Residence of G. L. Dillon

1918 St. Mary's Street

CONCRETE FOUNDATION . . . common brick basement and veneer walls . . . No. 1 N. C. pine framing and mill-work . . . select red oak floors . . . tile floor porch . . . tile baths . . . rubber tile kitchen floors . . . asbestos tile roof . . . copper sheet metal work . . . rockwool insulation . . . smooth plaster finish on rocklath base . . . interior paint flat and enamel . . . wallpapered . . . exterior paint lead and oil . . . Valdura on brickwork . . . Standard plumbing fixtures . . . Russel-Erwin hardware . . . Lightolier lighting fixtures . . . National concealed heating system with oil burner . . . weatherstripped.

HOUSES
by
COFFEY

The reputation of

HOUSES *by* COFFEY
is PERMANENT

by reason of the use of good materials and superb workmanship, and we feel honored the majority of these houses are erected with Millwork from

SANFORD
Sash & Blind Co.

SANFORD, N. C.

After more than half a century we are better situated and equipped to maintain the record of service built up through these many years.

From its organization the aim of this Company has been to give dependable service through adequate stock and well-trained personnel.

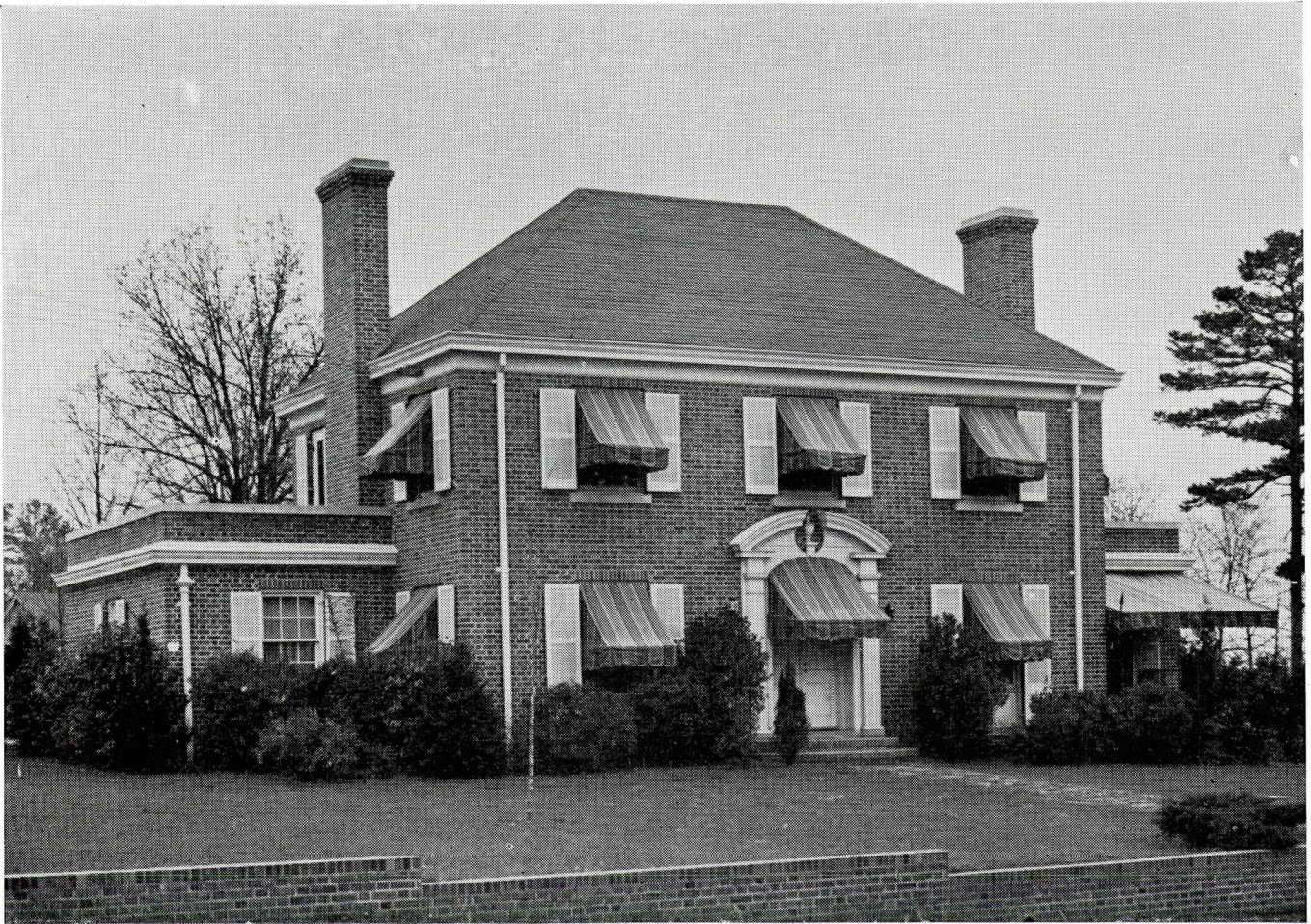
Our plant is modernly equipped and manned by skilled workmen which is the high standard of Millwork we furnish for Home Owners.

SANFORD SASH & BLIND CO.

SANFORD, N. C.

O. P. MAKEPEACE, President
H. T. MAKEPEACE

H. F. MAKEPEACE, General Manager
O. P. MAKEPEACE, JR.



Georgian Brick Veneer

J. W. Coffey & Son, Contractors

T. W. Cooper, Architect

Raleigh Model Home

2400 Whitaker Drive

CONCRETE FOUNDATION . . . common brick foundation and veneer . . . No. 1 N. C. framing and sheathing . . . No. 1 N. C. yellow pine millwork . . . composition roof . . . galvanized iron sheet metal work . . . rock wool insulation . . . white oak floors . . . smooth plaster on rock lath base . . . exterior paint, lead and oil . . . interior paint, flat and enamel . . . Sargent hardware . . . Standard plumbing fixtures . . . General Electric winter air conditioned heat . . . tile baths . . . Tiletex kitchen floor . . . wall papered . . . Beaver Creek flagstone . . . weather stripped . . . Fenestra steel casements.

HOUSES
by
COFFEY



Colonial -- Brick Veneer

J. W. Coffey & Son, Contractors

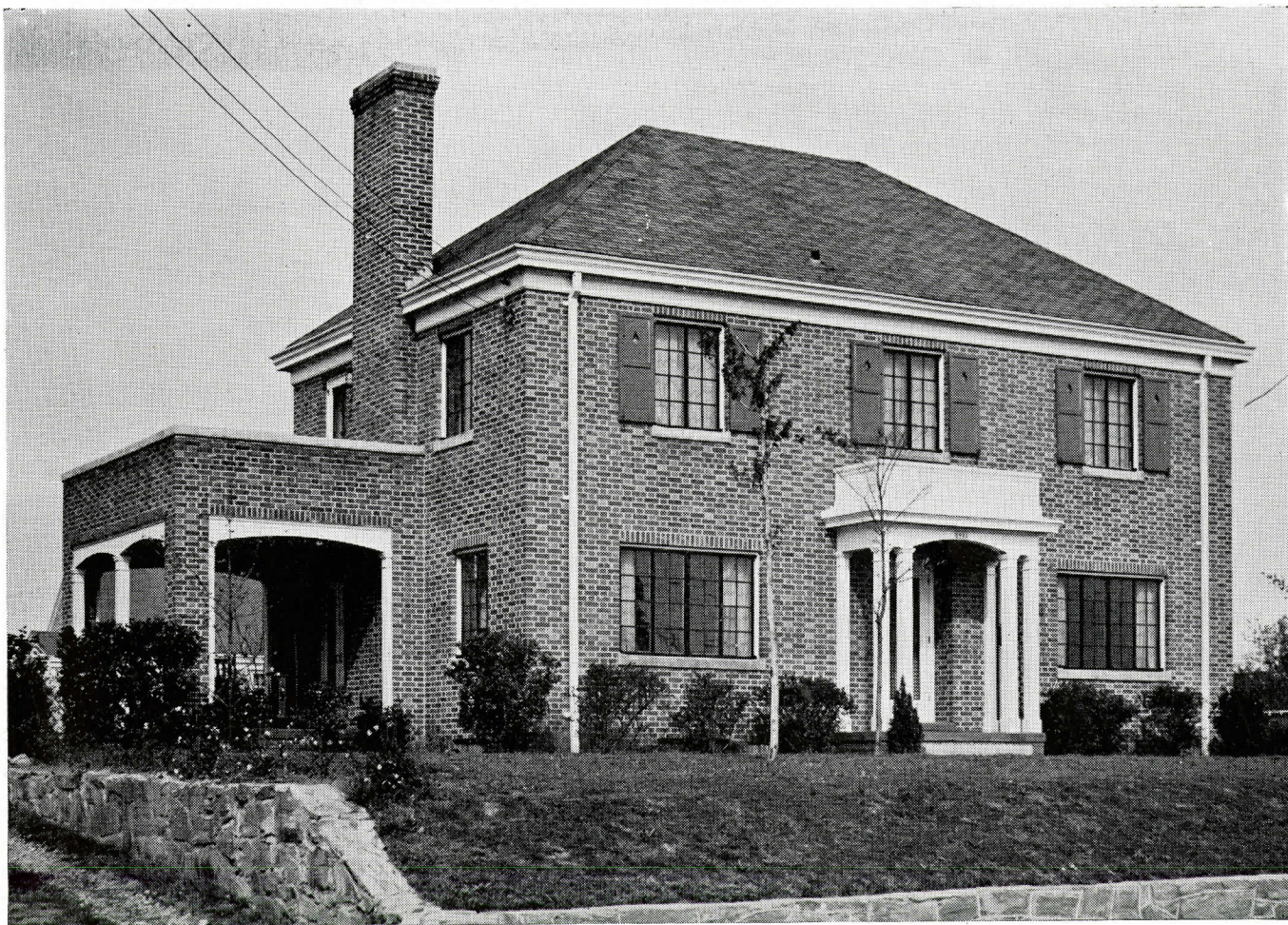
James A. Salter, Architect

Residence of Robert Newcomb

Lake Drive

CONCRETE FOUNDATION . . . common brick basement and veneer walls . . . No. 1 N. C. pine framing and mill-work . . . asphalt composition roof . . . galvanized iron sheet metal work . . . clear plain red oak floors . . . Linoleum in kitchen . . . tile baths . . . flat and enamel paint finish inside . . . lead and oil outside . . . Medusa white on brickwork . . . wallpapered . . . American steam heat and Standard plumbing fixtures by Vickers & Ruth, Raleigh . . . Sargent hardware . . . Lighting fixtures by Anderson Electric and Supply Co., Charlotte . . . exterior doors weatherstripped.

HOUSES
by
COFFEY



Colonial--Brick Veneer

J. W. Coffey & Son, Contractors

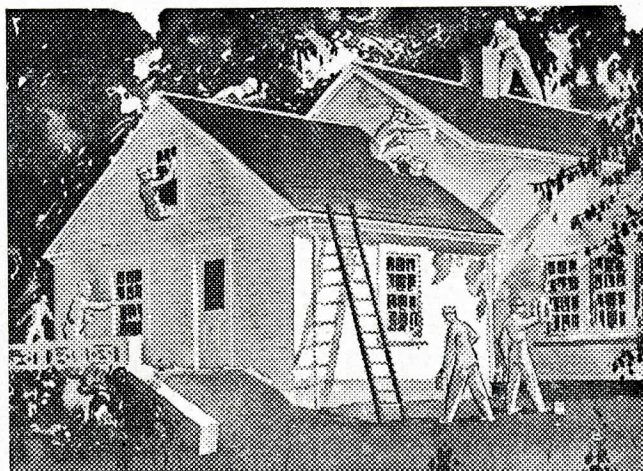
T. W. Cooper, Architect

Residence of James E. Briggs

2021 St. Mary's Street

CONCRETE FOUNDATION . . . selected common brick veneer . . . No. 1 N. C. framing and sheathing . . . No. 1 N. C. yellow pine millwork . . . composition asphalt roof . . . sheet metal work, galvanized iron . . . rock wool insulation . . . select red oak floors . . . Fenestra steel casements . . . white finished plaster or rock lath base . . . tile baths . . . Linoleum kitchen floor . . . Sargent hardware . . . Standard plumbing fixtures and National steam heat by Vickers & Ruth, Raleigh . . . exterior and interior paint, lead and oil . . . lighting fixtures by Anderson Electric and Supply Co., Charlotte.

HOUSES
by
COFFEY



John Askew

Painting

Interior :: Exterior



WALLPAPER

320 Glenwood Ave.

Tel. 2706

RALEIGH, N. C.

Johns-Manville
HOME INSULATION

KEEPS HOMES

Cooler in Summer
Warmer in Winter

HOME INSULATION CO.

RALEIGH, N. C.

580 Glenwood Ave.

Tel. 5220

MORE HEAT *from*
LESS FUEL *with*



GENERAL ELECTRIC

Automatic Oil Heat

STEAM, HOT WATER, VAPOR and WARM AIR

- DEPENDABLE
- CONTINUOUS HOT WATER
- TROUBLE FREE
- EVEN TEMPERATURE
- LONG LIFE
- DESIGNED, BUILT and WARRANTED by GENERAL ELECTRIC
- ECONOMICAL
- CLEAN
- SAFE
- COMPACT
- ATTRACTIVE

General Air Conditioning Company

580 Glenwood Ave.

Tel. 5220

Raleigh, N. C.



Georgian Colonial -- Brick Veneer

J. W. Coffey & Son, Contractors

T. W. Cooper, Architect

Residence of Jonathan Daniels

1540 Caswell Street

CONCRETE BASEMENT FLOORS and foundation . . . selected common brick walls and veneer . . . yellow pine framing and sheathing . . . No. 1 N. C. pine millwork by Martin Millwork Co. . . . slate roof . . . galvanized iron gutters and downspouts . . . ornamental wrought iron work by Peden Steel Co. . . . C. P. R. oak floors . . . linoleum kitchen . . . tile baths and accessories . . . Sargent hardware . . . Standard plumbing fixtures by Vickers & Ruth, Raleigh . . . Gilbarco winter air conditioning with oil burner by Standard Oil Co. . . . Johns-Manville insulation . . . plaster walls . . . knotty pine . . . weather strip doors.

HOUSES
by
COFFEY



Colonial Duplex--Brick Veneer

J. W. Coffey & Son, Contractors

T. W. Cooper, Architect

D. W. Vinson, Duplex Residence

1623 St. Mary's Street

CONCRETE FOUNDATION . . . selected common brick in basement and veneer walls . . . No. 1 N. C. pine framing and millwork . . . select red oak floors . . . Linoleum floors in kitchens . . . tile baths . . . wallpapered . . . flat and enamel interior paint finish . . . exterior paint lead and oil . . . Giant asphalt shingle roof . . . galvanized iron sheet metal work . . . smooth plaster on rock-lath base . . . separate American steam heating systems and Standard plumbing fixtures by Vickers & Ruth, Raleigh . . . Sargent hardware . . . lighting fixtures by Anderson Electric and Supply Co., Charlotte . . . exterior doors weatherstripped.

HOUSES
by
COFFEY



Southern Colonial-- Clapboard and Brick Veneer

J. W. Coffey & Son, Contractors

James Salter, Architect

Residence of R. B. Etheridge

2313 Beechridge Road

CONCRETE FOUNDATION . . . common brick foundation and veneer . . . No. 1 N. C. framing and sheathing . . . No. 1 N. C. yellow pine millwork . . . select red oak floors . . . rock wool insulation . . . composition roof . . . smooth plaster on rock lath base . . . exterior paint, lead and oil . . . interior paint, flat and enamel . . . completely wall papered . . . Sargent hardware . . . General Electric concealed heat with oil burner . . . completely weather stripped . . . tile baths . . . Standard plumbing fixtures . . . asphalt tile kitchen floor . . . lighting fixtures by Anderson Electric and Supply Co., Charlotte.

HOUSES
by
COFFEY

SEE **TRULL** ...for the BEST

PLUMBING :: AIR CONDITIONING :: HEATING

Stokol Coal Stokers

::

Torridheat Oil Burners

SUNBEAM

WINTER AIR CONDITIONING

[**FAIRBANKS - MORSE COOLERS**]
For HOMES . ROOMS . OFFICES . STORES

TRULL PLUMBING AND HEATING CO.

411½ Fayetteville St.

Phone 1964

RALEIGH, N. C.

John H. Phelps

ELECTRICIAN

Contracting — Wiring — Repairing

516 South Salisbury Street

Phone 30

RALEIGH, N. C.



Colonial Brick Veneer

J. W. Coffey & Son, Contractors

T. W. Cooper, Architect

Residence of E. E. Briggs

1825 St. Mary's Street

CONCRETE FOUNDATION . . . common brick basement walls . . . face brick veneer . . . N. C. No. 1 framing and millwork . . . oak floors . . . Linoleum kitchen floors . . . rubber tile in baths . . . asbestos tile roof . . . galvanized iron sheet metal work . . . smooth plaster on rocklath base . . . rockwool . . . insulation . . . interior paint flat and enamel . . . exterior lead and oil . . . wallpapered . . . Fox winter conditioned air heating system . . . Standard plumbing fixtures by Vickers & Ruth, Raleigh . . . Beaver Creek flagging . . . lighting fixtures by Anderson Electric and Supply Co., Charlotte . . . exterior doors weatherstripped . . . Sargent hardware.

HOUSES
by
COFFEY



Georgian--Brick Veneer

J. W. Coffey & Son, Contractors

T. W. Cooper, Architect

Residence of G. Y. Ragsdale

White Oak Road

CONCRETE FOUNDATION . . . common brick basement walls and veneer . . . No. 1 N. C. pine framing . . . No. 1 N. C. yellow pine millwork . . . slate roof . . . galvanized iron sheet metal work . . . rock wool insulation . . . select white oak floors . . . smooth plaster on rock lath base . . . Linoleum kitchen and bathroom floors . . . brick paint Medusa white . . . exterior paint lead and oil . . . interior flat and enamel . . . wallpapering by Askew . . . Sargent hardware . . . lighting fixtures by Anderson Electric and Supply Co., Charlotte . . . Standard plumbing fixtures by Vickers & Ruth, Raleigh . . . ornamental iron by Peden . . . Beaver Creek flagging . . . Fox Sun-beam air-conditioned heating system.

HOUSES
by
COFFEY



Southern Colonial Brick Veneer--Painted....

J. W. Coffey & Son, Contractors

T. W. Cooper, Architect

Residence of Mrs. Frank M. Jolly

White Oak Road

CONCRETE FOUNDATION . . . common brick veneer . . . Beaver Creek flagstone . . . No. 1 N. C. framing and sheathing . . . No. 1 N. C. yellow pine millwork . . . white finished plaster on rock lath base . . . clear plain red oak floor . . . slate roof . . . sheet metal work, galvanized iron . . . Medusa white paint and lead and oil paint on exterior . . . flat and enamel on interior . . . wall papered by Askew . . . ornamental iron by Peden . . . rock wool insulation . . . weather stripped . . . Sargent hardware . . . Standard plumbing fixtures by Vickers & Ruth, Raleigh . . . Fox winter air-conditioned heat . . . tile baths . . . lighting fixtures by Anderson Electric and Supply Co., Charlotte.

HOUSES
by
COFFEY

C. E. Ferebee

Mason Contractor



Highway 15A

Route 6

RALEIGH, N. C.

ARTHUR J. THURSTON

FRED O. SIPLE

THURSTON & SIPLE

Plastering

PLAIN and MODERNISTIC PLASTERING
and STUCCOING

PHONE 701-J

2711-2713 Lassiter's Mill Road ::

RALEIGH, N. C.



Colonial Brick Veneer Home

J. W. Coffey & Son, Contractors

T. W. Cooper, Architect

Residence of Dr. C. R. Bugg

Whitaker Drive

CONCRETE FOUNDATION and basement floors . . . selected common brick walls and veneer . . . yellow pine framing and sheathing . . . No. 1 N. C. yellow pine millwork by Miller Manufacturing Co., Richmond, Va. . . plaster walls . . . Johns-Manville insulation . . . composition roof . . . S. P. R. oak floors . . . linoleum kitchen and bath . . . tile accessories . . . Standard plumbing fixtures by Vickers & Ruth, Raleigh . . . Fox winter air conditioning heat with stoker . . . Sargent hardware . . . lighting fixtures by Anderson Electric and Supply Co., Charlotte . . . copper pipe . . . weather strip doors . . . galvanized iron gutters and downspouts.

HOUSES
by
COFFEY



English -- Brick Veneer

J. W. Coffey & Son, Contractors

T. W. Cooper, Architect

Residence of Paul Cheek

Cowper Drive

CONCRETE FOUNDATION . . . common brick basement wall
 . . . sand-faced common brick veneer . . . No. 1 N. C.
 pine framing . . . No. 1 N. C. yellow pine millwork . . . select red oak
 floors . . . composition roof . . . galvanized iron sheet metal work . . .
 exterior doors weather stripped . . . sand-finished plaster on rock lath
 base . . . rock wool insulation . . . exterior paint lead and oil . . . interior
 flat and enamel . . . Sargent hardware . . . lighting fixtures by An-
 derson Electric and Supply Co., Charlotte . . . National concealed steam
 heat and Standard plumbing fixtures by Vickers & Ruth, Raleigh.

HOUSES
by
COFFEY



Georgian -- Asbestos Shingles

J. W. Coffey & Son, Contractors

James A. Salter, Architect

R. B. Etheridge, Owner

Circle Drive

DUPLEX HOUSE . . . concrete foundation . . . common brick basement wall and chimneys . . . No. 1 N. C. pine framing and sheathing . . . No. 1 N. C. yellow pine mill work . . . composition roof . . . galvanized sheet metal work . . . asbestos siding . . . rock wool insulation . . . select red oak floors . . . Tiletex kitchen floors . . . tile baths . . . smooth-finished plaster on rock lath base . . . Standard plumbing fixtures . . . Fox Sunbeam heating systems . . . Sargent hardware . . . Lighting fixtures by Anderson Electric and Supply Co., Charlotte . . . overhead garage doors . . . weather stripped . . . lead and oil paint . . . wall papered.

HOUSES
by
COFFEY

A. H. BYRUM

Lumber
Building Material
Millwork

ASPHALT ROOFING . WALL BOARDS

Telephone 3654

West Hargett, Corner Snow Avenue

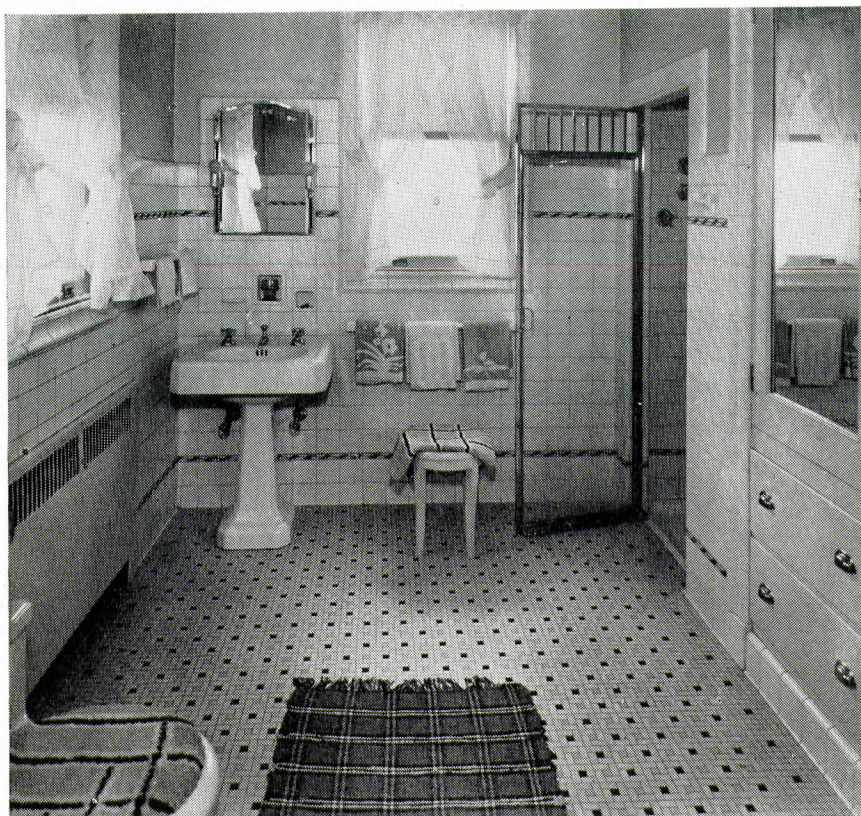
RALEIGH, N. C.



**LOOK at
YOUR Home**

Can You Take Pride In It?

It is easy to have just the kind of home you want now. You can have a home that you will be proud to live in and proud to invite your friends to. Inquire of any of the firms listed herein and let them show you how easy it is to remodel and repair.



BATHROOM IN D. T. POINDEXTER HOME
Tile Installed by BENJ. F. McCLAMROCH & Co., Inc.

Benj. F. McClamroch & Co.

INCORPORATED



**TILE
MARBLE
TERRAZZO**



Armstrong Rubber
Asphalt Tile and
Acoustical Products



PHONE 1805
223 South West Street
RALEIGH, N. C.



Colonial Residence of Brick Veneer

J. W. Coffey & Son, Contractors

T. W. Cooper, Architect

Residence of I. O. Brady

Lassiter's Mill Road

CONCRETE FOUNDATION and basement floors . . . Selected common brick veneer and walls. Yellow pine framing and sheathing. No. 1 N. C. yellow pine millwork by Sanford Sash and Blind Co. Clear plain white oak floors, linoleum kitchen, tile bath and accessories . . . composition roof . . . galvanized drain gutters and downspouts . . . Standard plumbing fixtures by Vickers & Ruth, Raleigh . . . General Electric Air Conditioning with oil burner . . . Sargent hardware . . . lighting fixtures by Anderson Electric and Supply Co., Charlotte . . . plaster walls . . . knotty pine . . . exterior paint, lead and oil. Interior paint, flat and enamel . . . wallpaper . . . Johns-Manville insulation . . . overhead garage doors . . . weatherstripped outside doors.

HOUSES
by
COFFEY



Colonial -- Brick Veneer

J. W. Coffey & Son, Contractors

T. W. Cooper, Architect

Residence of G. Wallace Smith

Hawthorne Road and Ambleside Drive

CONCRETE FOUNDATION . . . common brick foundation and veneer walls . . . No. 1 N. C. pine framing and sheathing . . . N. C. yellow pine millwork . . . composition roof . . . attic insulated . . . exterior paint lead and oil . . . interior paint flat and enamel . . . wallpapered . . . select red oak floors . . . linoleum in kitchen and baths . . . smooth white plaster on rocklath base . . . Sargent finish hardware . . . Standard plumbing fixtures . . . General Electric winter air-conditioned heat . . . exterior doors weatherstripped . . . lighting fixtures by Anderson Electric and Supply Co., Charlotte,

HOUSES
by
COFFEY



Colonial Cottage--Brick Veneer

J. W. Coffey & Son, Contractors

T. W. Cooper, Architect

Residence of Litchford Willis

Byrd Street

CONCRETE FOUNDATION . . . selected common brick veneer and foundation walls . . . No. 1 N. C. pine framing and millwork . . . asphalt composition roof . . . galvanized iron sheet metal work . . . smooth-finished plaster and rocklath base . . . select red oak floors . . . interior paint flat and enamel . . . Texolite ceilings . . . exterior paint lead and oil . . . wallpapered . . . exterior doors weather-stripped . . . insulated . . . American one-pipe vacuum heat and Standard plumbing fixtures by Vickers & Ruth, Raleigh . . . Sargent hardware . . . lighting fixtures by Anderson Electric and Supply Co., Charlotte.

HOUSES
by
COFFEY

Does Your Home Meet Our Requirements?

¶ We insure only the very best properties — such as you see in this booklet.

¶ If your property meets these standards, you may save as much as 25 per cent on your fire and property insurance by placing it with us.

The Mutual Insurance Agency

of RALEIGH

HUGH H. MURRAY, Manager

Room 313 Lawyers Bldg.

Tel. 3091-3092

RALEIGH, N. C.



The CROWNING Touch

To a

COLONIAL HOME

- Here are the new Colonial fixtures you have seen advertised in the smart magazines. Lightolier's Crown Colony Series. Faithfully reproducing motifs that were in favor when the original thirteen states were crown colonies of England, they blend perfectly with the architecture and furnishings of that Colonial style home you are building. There is a style for every location in the house.

THOMPSON Electrical Co.

SERVICE SINCE 1907



20 W. Hargett St.



Phone 370



Colonial Brick Veneer

J. W. Coffey & Son, Contractors

T. W. Cooper, Architect

Residence of W. M. Pizer

Nash Drive

CONCRETE FOUNDATION . . . special selected common brick in basement and veneer walls . . . No. 1 N. C. pine framing and millwork . . . asphalt composition roof . . . galvanized iron sheet metal work . . . select red oak floors . . . Linoleum kitchen floors . . . tile baths . . . smooth-finished plaster and rocklath base . . . paint finish flat and enamel on interior . . . wallpapered . . . exterior paint lead and oil . . . Rockwool insulation . . . Fox winter conditioned air system . . . Standard plumbing fixtures by Vickers & Ruth, Raleigh . . . lighting fixtures by Anderson Electric and Supply Co., Charlotte . . . Sargent hardware . . . exterior doors weatherstripped.

HOUSES
by
COFFEY



Georgian--Brick Veneer

J. W. Coffey & Son, Contractors

T. W. Cooper, Architect

Residence of Lee Parker

Country Club Drive

CONCRETE FOUNDATION . . . common brick veneer and foundation . . . No. 1 N. C. yellow pine millwork . . . No. 1 N. C. framing and sheathing . . . red oak floors . . . smooth plaster on rock lath base . . . Hood tile roof . . . Johns-Manville insulation . . . tile baths . . . linoleum kitchen and breakfast room floors . . . galvanized gutters and downspouts . . . copper flashing and valleys . . . General Electric winter air conditioned heat . . . Standard plumbing fixtures by Vickers & Ruth, Raleigh . . . exterior paint, lead and oil . . . interior paint, flat and enamel . . . lighting fixtures, Lightolier by Thompson Electrical Co. . . wall paper by Askew . . . weather stripped by Dickens.

HOUSES
by
COFFEY



Colonial Brick Veneer-- Painted White

J. W. Coffey & Son, Contractors

T. W. Cooper, Architect

Residence of H. B. Ruffin

Windy Knoll—Wake Forest Road

CONCRETE FOUNDATION . . . common brick basement and veneer walls . . . No. 1 N. C. pine framing . . . No. 1 N. C. yellow pine millwork . . . composition roof . . . galvanized iron sheet metal work . . . rock wool insulation . . . select red oak floor . . . smooth-finished plaster on rock lath base . . . Linoleum kitchen and bathroom floors . . . exterior doors weather stripped . . . brick paint Medusa white . . . exterior paint lead and oil . . . interior flat and enamel . . . wallpapered by Askew . . . Sargent hardware . . . lighting fixtures by Anderson Electric and Supply Co., Charlotte . . . Fox Sunbeam air-conditioned heating system . . . Standard plumbing fixtures by Vickers & Ruth, Raleigh.

HOUSES
by
COFFEY

T. H. BRIGGS & SONS

INCORPORATED

For 74 Years Raleigh's Leading Building Material Dealers

... Sargent Hardware

... Lowe Brothers and Vita-Var Paints

... United States Gypsum Company Products

... Insulating Wool

... Ideal Brick

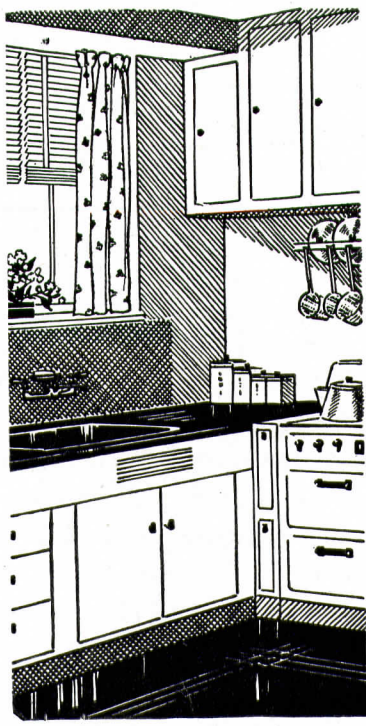
... In fact, all the products for a WELL-BUILT building such as
JOHN W. COFFEY & SON build.

"Consult Specialists When Building"

220 Fayetteville Street

::

RALEIGH, N. C.



the TRULY MODERN *home*

is designed to allow

Electrical LIVING

Light Conditioned, of course, to protect the family's vision . . . with an All-Electric Kitchen to save thousands of steps each day . . . and an instant flow of hot water, electrically heated . . . comfortable at all seasons, thanks to Air Conditioning . . . and adequately wired to allow the enjoyment of many time, labor and money saving electrical appliances . . . that is the MODERN home that your architect and contractor will be glad to help you build!

CAROLINA POWER & LIGHT CO.

"Electricity Is CHEAP — Why Wait?"



Georgian Colonial -- Stone Veneer

J. W. Coffey & Son, Contractors

J. A. Salter, Architect

Residence of C. L. Newman

Oberlin Road

CONCRETE FOUNDATION and basement floor . . . brick walls and chimneys with stone veneer . . . yellow pine framing and sheathing . . . No. 1 N. C. yellow pine millwork by Sanford Sash and Blind Co. . . steel casement by Truscon . . . Pennvernon glass . . . C. P. W. oak floors . . . linoleum in kitchen . . . tile baths and accessories . . . Standard plumbing fixtures by Vickers & Ruth, Raleigh . . . plaster walls . . . asbestos roof . . . tin deck . . . galvanized iron downspouts and gutters . . . exterior paint, lead and oil . . . interior paint, flat and enamel . . . wallpaper . . . Johns-Manville insulation . . . weatherstrips . . . Fox winter air conditioning with oil burner . . . Sargent hardware . . . lighting fixtures by Anderson Electric and Supply Co., Charlotte . . . electric hot water heater.

HOUSES
by
COFFEY



Colonial Brick Veneer--Painted White

J. W. Coffey & Son, Contractors

J. M. Edwards, Jr., Architect

Residence of Dr. W. W. Dowell

Park Drive

DUPLEX HOUSE . . . concrete foundation . . . common brick basement and veneer walls . . . No. 1 N. C. pine framing and sheathing . . . No. 1 grade N. C. yellow pine mill-work . . . composition roof . . . galvanized iron sheet metal work . . . rock wool insulation . . . select red oak floors . . . smooth-finished plaster on rock lath base . . . Linoleum kitchens and baths . . . exterior paint lead and oil . . . Mastex white brick paint . . . interior flat and enamel . . . wallpapered complete . . . weather stripped . . . Standard plumbing fixtures by Vickers & Ruth, Raleigh . . . Standard Oil winter air-conditioned heating system . . . Sargent hardware . . . lighting fixtures by Anderson Electric and Supply Co., Charlotte . . . overhead garage doors.

HOUSES
by
COFFEY



Colonial Duplex Brick Veneer--Painted White

J. W. Coffey & Son, Contractors

T. W. Cooper, Architect

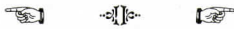
Residence of Mrs. J. E. Kennedy

Cor. Williamson Drive and St. Mary's Sts.

CONCRETE FOUNDATION . . . common brick veneer . . .
 No. 1 N. C. pine framing . . . No. 1 N. C. yellow
 pine millwork . . . clear plain red oak floors . . . composition roof . . .
 rock wool insulation . . . Medusa white exterior brick paint . . . exterior
 wood work lead and oil . . . interior flat and enamel . . . wallpaper by
 Askew . . . smooth-finished plaster on rock lath base . . . exterior doors
 weather stripped . . . galvanized iron sheet metal work . . . Sargent
 hardware . . . lighting fixtures by Anderson Electric and Supply Co.,
 Charlotte . . . Fox Sunbeam air-conditioned heating system . . . Stan-
 dard plumbing fixtures.

HOUSES
by
COFFEY

NO JOB TOO SMALL



NO JOB TOO LARGE

David G. Allen

CONTRACTOR

Post Office Box 1524

Office and Show Room:
104 North West Street

Phones: Office 1819, Res. 4245

RALEIGH, N. C.

FOR COMPLETE INSTALLATION of

Tiles ... Marble

Estimates Cheerfully Furnished on Request

Structural Slate
Flagstone
Terrazzo
Quarries

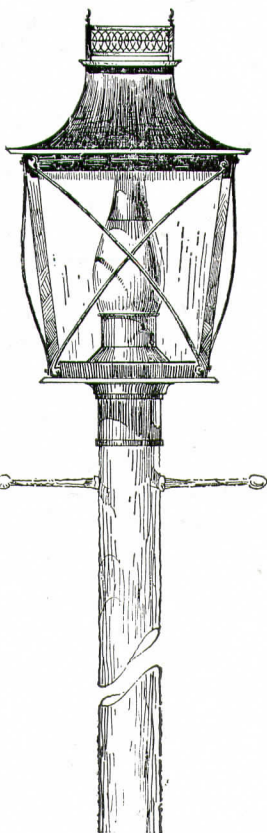
Bath Room Accessories



Medicine Cabinets
Ceramics : Faience



Resilient Floors
Composition
Rubber
Asphalt



LIGHTING FIXTURES *of Character*

For Any Style or Type of Home

Also . . .

MEDICINE CABINETS
ANDIRONS

ELECTRIC LOGS

Write for and use the services of our trained representatives who regularly travel through Raleigh and vicinity.

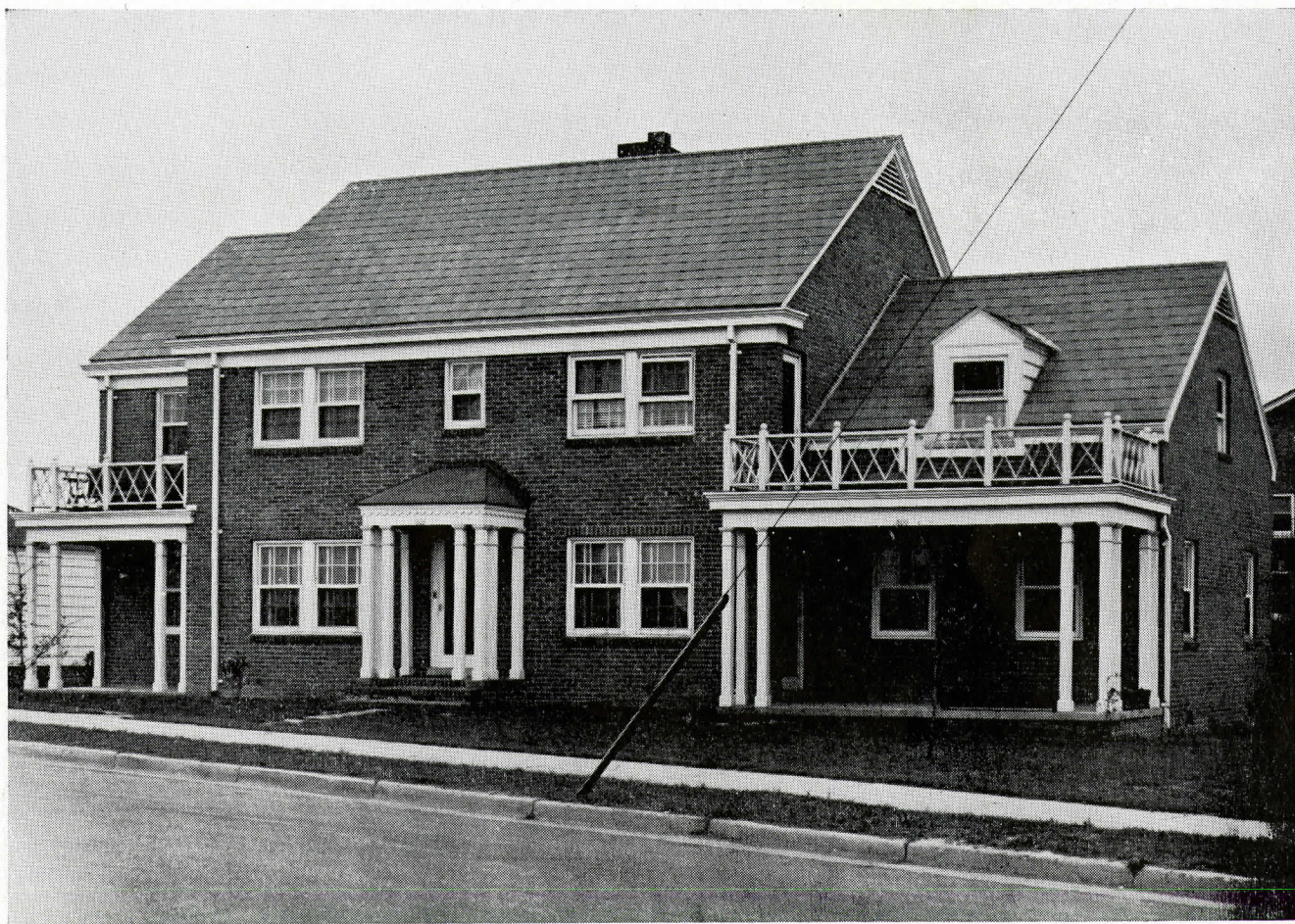
The Carolinas' Largest Lighting Fixture Dealers

A N D E R S O N

ELECTRIC AND SUPPLY COMPANY

Cor. 5th and College Sts.

CHARLOTTE, N. C.



Four-Family Brick-Veneer Apartment

J. W. Coffey & Son, Contractors

J. M. Edwards, Jr., Architect

Miss Rosa Paschal, Apartments

Cor. Clark and Horne Sts.

CONCRETE FOUNDATION . . . common brick basement and veneer walls . . . No. 1 N. C. pine framing and mill-work . . . asbestos tile roof . . . galvanized iron sheet metal work . . . Rockwool insulation . . . interior paint flat and enamel . . . exterior lead and oil . . . smooth-finished plaster on rocklath base . . . select red oak floors . . . Linoleum in kitchens and baths . . . American heating system with stoker by Vickers & Ruth, Raleigh . . . incinerator . . . Sargent hardware . . . lighting fixtures by Anderson Electric and Supply Co., Charlotte . . . Standard plumbing fixtures by Vickers & Ruth, Raleigh . . . exterior doors weatherstripped.

HOUSES
by
COFFEY



Colonial -- Brick Veneer

J. W. Coffey & Son, Contractors

Ross Shumaker, Architect

G. T. Kinney, Owner

Cor. Clark and Pogue Sts.

CONCRETE FOUNDATION . . . select common brick basement and veneer walls . . . No. 1 N. C. pine framing and sheathing . . . No. 1 N. C. yellow pine millwork . . . asbestos roof . . . galvanized iron sheet metal work . . . rock wool insulation . . . select red oak floors . . . weather strips . . . exterior paint lead and oil . . . interior flat and enamel . . . smooth-finished plaster on rock lath base . . . Linoleum kitchen and baths . . . Standard plumbing fixtures by Vickers & Ruth, Raleigh . . . Sargent hardware . . . National steam heat by Vickers & Ruth, Raleigh . . . lighting fixtures by Anderson Electric and Supply Co., Charlotte.

HOUSES
by
COFFEY



Monterey Colonial Brick Veneer--Painted

J. W. Coffey & Son, Contractors

T. W. Cooper, Architect

Residence of T. W. Cooper

Canterbury Road

CONCRETE FOUNDATION . . . Cherokee brick veneer . . .
 No. 1 N. C. framing and sheathing . . . No. 1 N. C.
 yellow pine millwork . . . Johns-Manville asbestos roof . . . white fin-
 ished plaster on rock lath base . . . clear plain red oak floors . . .
 Medusa white brick paint . . . exterior paint, lead and oil . . . flat paint
 and enamel on interior . . . galvanized iron sheet metal work . . .
 Standard plumbing fixtures by Vickers & Ruth, Raleigh . . . rock wool
 insulation . . . General Electric winter air conditioned heat . . . Sargent
 hardware . . . lighting fixtures by Anderson Electric and Supply Co.,
 Charlotte . . . wall paper by Askew.

HOUSES
by
COFFEY

B. B. BENSON, President

::

R. T. VICK, Secretary-Treasurer

Carolina Builders Corporation

217 North Dawson Street : Phone 2360

LUMBER : MILLWORK : BUILDING MATERIAL
COAL

FACTORY REPRESENTATIVES for

Russwin Distinctive Builders' Hardware

Curtis Millwork

Athey's Paints

Masonite Products

Free-man Stokers

Atlas Portland Cement

Brixment

Ruberoid Asphalt and Asbestos Shingles
Roll Roofing and Building Paper

R. L. MOORE

:

H. L. MYATT

:

CLIFTON BENSON

BE INDEPENDENT

OWN YOUR HOME and build it with STONE in BUDLEIGH

You'll have no regrets. Stone improves with age in quality and looks, SO WILL BUDLEIGH . . . Raleigh suburb supreme!

The lots in the Hills of BUDLEIGH, where you find trees and water, are so suitable for STONE. . . You'll be surprised at the low cost of stone, as well as the lots in BUDLEIGH.

Build with Stone . . . Buy in BUDLEIGH and be happy ever after.

Ask those who live in BUDLEIGH

C. R. BOONE

Phone 3572

RALEIGH, N. C.

108 W. Martin St.



English Cottage--Brick Veneer and Stone

J. W. Coffey & Son, Contractors

T. W. Cooper, Architect

Residence of John N. Coffey

Canterbury Road

CONCRETE FOUNDATION . . . common brick foundation and veneer . . . native stone chimney . . . cypress gable boards . . . No. 1 N. C. pine framing and sheathing . . . No. 1 N. C. yellow pine millwork . . . Johns-Manville asbestos roof . . . sheet metal work, galvanized iron . . . weather stripped . . . exterior paint, lead and oil . . . Bondex white on brick work . . . white finished plaster on rock lath base . . . clear plain red oak floors . . . interior paint, flat and enamel . . . wall papered by Askew . . . tile baths . . . Linoleum kitchen floor . . . rock wool insulation . . . Sargent hardware . . . Standard plumbing fixtures by Vickers & Ruth, Raleigh . . . General Electric winter air-conditioned heat . . . lighting fixtures by Anderson Electric and Supply Co., Charlotte . . . ornamental iron by Peden.

HOUSES
by
COFFEY



English -- Brick Veneer

J. W. Coffey & Son, Contractors

J. M. Edwards, Jr., Architect

Residence of J. W. Johansen

Cor. Brooks and Bedford

CONCRETE FOUNDATION . . . common brick veneer and foundation . . . Beaver Creek flagstone terrace . . . No. 1 N. C. pine framing and sheathing . . . No. 1 N. C. yellow pine millwork . . . Johns-Manville asbestos roofing and insulation . . . red oak floors . . . sand finished plaster on rock lath base . . . galvanized iron downspouts and gutters . . . copper flashing and valleys . . . exterior paint, lead and oil . . . interior paint, flat and enamel and stain . . . Standard plumbing fixtures by Vickers & Ruth, Raleigh . . . Standard Oil winter air conditioned heat . . . tile baths . . . linoleum kitchen floor . . . Sargent hardware . . . aluminum screens . . . bronze weather strip . . . lighting fixtures by Lightolier, Thompson Electric Co., Raleigh . . . ornamental iron by Peden.

HOUSES
by
COFFEY



New England Type--Stone Painted White

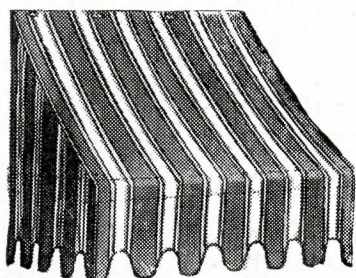
J. W. Coffey & Son, Contractors
J. M. Edwards, Jr., Architect
Residence of W. H. Yarborough
Cambridge Road

CONCRETE FOUNDATION . . . common brick basement walls
 . . . Wake stone veneer . . . No. 1 N. C. pine framing
 and millwork . . . select red oak floors . . . asbestos tile roof . . . galva-
 nized iron sheet metal work . . . smooth plaster on rocklath base . . .
 Linoleum kitchen and bath floors . . . flat and enamel interior paint . . .
 exterior lead and oil . . . stone painted with Bondex . . . exterior doors
 weatherstripped . . . Standard oil winter air conditioned heating sys-
 tem . . . Standard plumbing fixtures by Vickers & Ruth, Raleigh . . .
 Sargent hardware . . . lighting fixtures by Anderson Electric and Sup-
 ply Co., Charlotte.

HOUSES
by
COFFEY

for your **NEW HOME**

- VENETIAN BLINDS
- WINDOW SHADES
- AWNINGS
- LAWN FURNITURE
- RADIATOR ENCLOSURES
- FIREPLACE FIXTURES
- PELLA ROLLSCREENS
- PELLA CASEMENT WINDOWS



¶ Our fifteen years' experience and reputation stands behind everything we sell.

ESTIMATES CHEERFULLY FURNISHED

Phones 1156-1157

CLARK ART SHOP

133-135 S. Wilmington St.

RALEIGH, N. C.

Only **PABCO** *offers you these two big values!*



**Have Your FLOORS
CUSTOM Built . . .**

See the large number of designs which can be made from our large stock of Pabco Burlap Back Inlaid Linoleum.

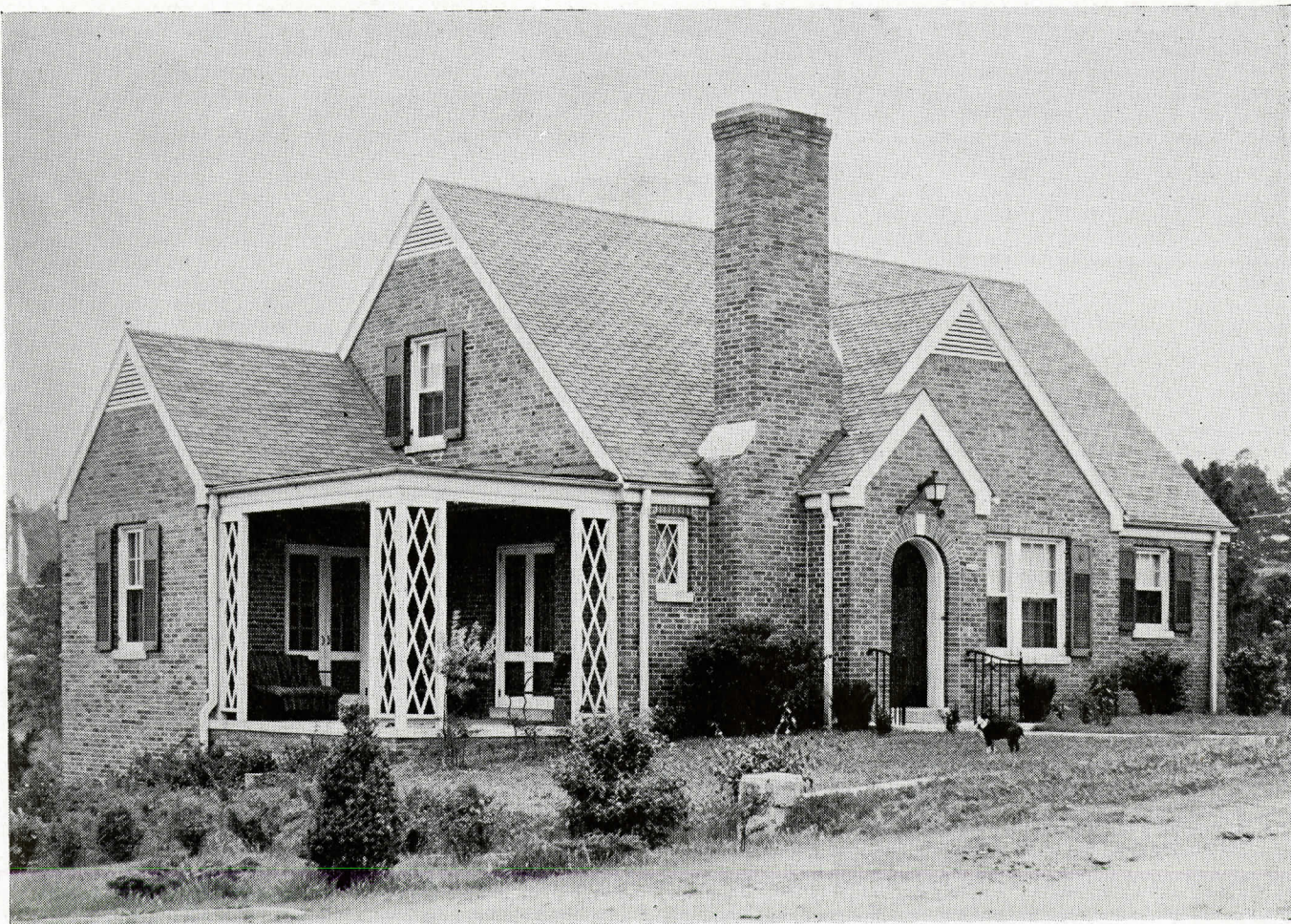
**LINOLEUM . RUBBER TILE
and
MASTIPAVE FLOORS**

GUARANTEED LAYING SERVICE

Raleigh **FURNITURE Co.**

119-121 E. Hargett St.

Phone 555



English Type Brick Veneer

J. W. Coffey & Son, Contractors

T. W. Cooper, Architect

Residence of J. C. Holland

2206 Whitaker Drive

CONCRETE FOUNDATION . . . selected common brick basement and veneer walls . . . No. 1 N. C. pine framing and millwork . . . select red oak flooring . . . Linoleum in kitchen . . . tile baths . . . smooth plaster on rocklath base . . . flat and enamel interior finish . . . wallpapered . . . exterior finish lead and oil . . . asphalt composition roof with galvanized iron gutters and downspouts . . . American steam heat and Standard plumbing fixtures by Vickers & Ruth, Raleigh . . . Corbin hardware . . . lighting fixtures by Anderson Electric and Supply Co., Charlotte . . . exterior doors weather-stripped.

HOUSES
by
COFFEY



English Residence of Brick Veneer

J. W. Coffey & Son, Contractors

Nelson & Cooper, Architects

Residence of W. H. Bond

2628 Fairview Road

*F*OUNDATION, CONCRETE . . . basement walls, brick . . . veneer, common selected brick . . . concrete basement floors . . . framing No. 1 N. C. yellow pine . . . roof, slate . . . stucco gable . . . cypress half timbers . . . millwork N. C. yellow pine by Martin Millwork Co. . . plaster walls . . . Fenestra steel sash . . . limestone trim entrance . . . C. P. W. oak floors . . . tile baths . . . Standard plumbing . . . concealed radiators . . . National boiler . . . gutters and downspouts of galvanized iron . . . Pennvernon glass . . . finish hardware, Sargent . . . lighting fixtures, Thompson Electric Co., Raleigh . . . ornamental chimney caps . . . exterior paint, lead and oil . . . interior paint flat . . . Tiletex floor in kitchen.



English Residence -- Brick Veneer

J. W. Coffey & Son, Contractors
Nelson & Cooper, Architects
Residence of H. K. Witherspoon
2630 Fairview Road

BBRICK FOUNDATION and basement walls selected common brick veneer . . . No. 1 N. C. pine framing and mill-work . . . select red oak floors . . . composition asphalt roof . . . galvanized iron sheet metal work . . . Fenestra steel casements . . . Penn-vern glass . . . sand-finished plaster on rocklath base . . . interior paint lead and oil . . . exterior creosote stain . . . stucco gables . . . National steam heat . . . Standard plumbing fixtures . . . Russell-Erwin hardware . . . Lightolier lighting fixtures . . . tile bath floors.

HOUSES
by
COFFEY

A new home means . . .

NEW Furniture

from THE FLOOR UP

• •

Be sure to specify a linoleum of high quality for your floor covering. We handle Congoleum-Nairn and Armstrong, which are considered the two outstanding floor coverings.

We specialize in Personalized Inlaid floors. Linoleum and Laying Service are guaranteed to be satisfactory. No job too large and none too small. Linoleum laid by factory-trained mechanic with fifteen years' experience.

J. A. Wood Furniture Co.

17 East Martin Street — Phone 1846 — RALEIGH, N. C.

Do You Need Money ----



To .. BUILD?

To .. BUY?

To .. REFINANCE?

Your Home

▼ ▼

We can finance your home through an 80% or 90%
F.H.A. Insured Mortgage Loan

▼ ▼

CONSULT ME—NO OBLIGATION

E. E. DUNCAN

Room 512—Lawyers Bldg.

Phone 3064

RALEIGH, N. C.



English Type--Brick Veneer

J. W. Coffey & Son, Contractors

Nelson & Cooper, Architects

Residence of H. Paul Yelverton

1510 Carr Street

CONCRETE FOUNDATION . . . selected common brick basement and veneer walls . . . No. 1 N. C. pine framing . . . fir millwork . . . cypress half timber . . . slate roof . . . galvanized iron sheet metal work . . . select red oak floors . . . Linoleum kitchen floors . . . tile baths . . . Fenestra steel casements . . . wrought iron main stairway . . . stucco gables . . . sand-finished plaster on rocklath base . . . Russwin hardware . . . Lightolier lighting fixtures . . . American steam heating system . . . Standard plumbing fixtures . . . weather-stripped . . . interior finish flat, enamel and stain . . . exterior creosote stain . . . Pennvernon glass inside . . . native Wake County stone in chimney.

HOUSES
by
COFFEY



Southern Colonial-- Clapboards Painted White

J. W. Coffey & Son, Contractors

T. W. Cooper, Architect

Mrs. W. A. Cooper, Owner

123 Forest Road

BRICK FOUNDATION . . . No. 1 N. C. framing and sheathing . . . No. 1 N. C. yellow pine millwork . . . slate roof . . . galvanized iron sheet metal work . . . wide pine siding . . . clear plain white oak floors . . . sand-finished plaster on rock lath base . . . tile baths . . . Russwin hardware . . . lighting fixtures by Lightolier . . . warm air heat . . . Standard plumbing fixtures.

HOUSES
by
COFFEY



Colonial Home of Brick Veneer

J. W. Coffey & Son, Contractors

Nelson & Cooper, Architects

Residence of W. I. Proctor

1521 Jarvis Street

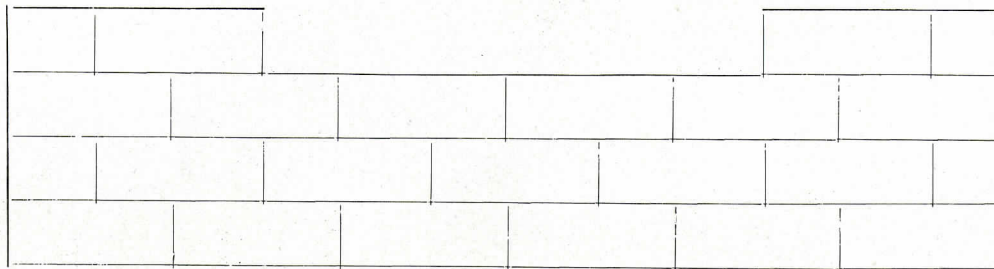
CONCRETE FOUNDATION and basement floors . . . brick wall and veneer . . . N. C. yellow pine framing and sheathing . . . No. 1 N. C. yellow pine millwork and screens by Miller Manufacturing Co. . . . Ludowici Celadan . . . tile roof in green . . . copper gutter and downspouts . . . C. P. W. oak floors . . . plaster walls . . . tile bath . . . Kohler plumbing fixtures . . . National concealed heat . . . oil burner . . . brick porch floor . . . overhead garage doors . . . wallpaper . . . Exterior paint, lead and oil . . . interior paint, flat and enamel . . . brickwork paint Medusa . . . Russell and Erwin finish hardware . . . lighting fixtures Thompson Electrical Co., Raleigh.

HOUSES
by
COFFEY

Cherokee Brick Co.

MANUFACTURERS and DISTRIBUTORS

▼ ▼
"Build With Brick"



Over 20,000,000 Annual Capacity

First-Citizens Trust Bldg.

Phone 2137

RALEIGH, N. C.

J. F. Willis Sheet Metal Works

■
Built-up
Asbestos
Slate
Composition
■
TIN and TILE
■
ROOFING
■



■
WARM-AIR
HEATING
■
Wise Furnaces
■
Repair Work
■
Air
Conditioning
■

Peace St. at Halifax

Phone 2845

RALEIGH, N. C.



Colonial Wood Clapboard--Painted White

J. W. Coffey & Son, Contractors

W. H. Dietrick, Architect

Carl K. Hill, Owner

1524 Jarvis Street

B RICK FOUNDATION . . . old brick chimneys . . . No. 1
 N. C. pine framing and sheathing . . . No. 1 N. C.
 yellow pine millwork . . . composition roof . . . galvanized iron sheet
 metal work . . . wide German siding . . . Celotex insulation . . . smooth-
 finished plaster on rock lath base . . . clear plain white oak floors . . .
 Linoleum in kitchen . . . tile baths . . . National steam heat and Stand-
 ard plumbing fixtures by Vickers & Ruth, Raleigh . . . Russwin hard-
 ware . . . lighting fixtures by Lightolier . . . weather stripped . . . ex-
 terior paint lead and oil . . . interior flat and enamel . . . wallpapered
 by Brewer.

HOUSES
by
COFFEY



Colonial -- Brick Veneer

J. W. Coffey & Son, Contractors

Jas. A. Salter, Architect

Residence of C. H. Andrews

509 Burton Street

B RICK FOUNDATION . . . selected common brick veneer . . .
 No. 1 N. C. pine framing . . . No. 1 N. C. yellow
 pine millwork . . . composition roof . . . rock wool insulation . . . sand-
 finished plaster on rock lath base . . . select white oak flooring . . .
 exterior paint lead and oil . . . interior flat and enamel . . . Linoleum
 kitchen floor . . . tiled baths . . . Russwin hardware . . . lighting fixtures
 by Carter . . . Standard plumbing fixtures and National steam heat by
 Vickers & Ruth, Raleigh.

HOUSES
by
COFFEY



English Type--Brick Veneer

J. W. Coffey & Son, Contractors

T. W. Cooper, Architect

Residence of R. D. Beam

1539 Caswell Street

CONCRETE FOUNDATION . . . common brick basement and veneer walls . . . No. 1 N. C. pine framing and mill-work . . . select red oak floors . . . stucco gables with cypress half-timbers . . . composition asphalt roof . . . galvanized iron sheet metal work . . . sand-finished plaster on rocklath base . . . rockwool insulation . . . weatherstripped . . . rubber tile kitchen floors . . . tile floors and base in baths . . . Standard plumbing fixtures and National steam-heat with stoker by Vickers & Ruth, Raleigh . . . Russell-Erwin hardware . . . lighting fixtures . . . interior paint flat and enamel . . . exterior lead and oil.

HOUSES
by
COFFEY



Colonial Duplex--Brick Veneer

J. W. Coffey & Son, Contractors

T. W. Cooper, Architect

Residence of Victor Sorrell

1535 Caswell Street

CONCRETE FOUNDATION . . . common brick basement and veneer walls . . . No. 1 N. C. pine framing and mill-work . . . select red oak floors . . . tile bath floors . . . Linoflor kitchen floors . . . smooth plaster and rocklath base . . . composition asphalt roof . . . galvanized iron sheet metal work . . . interior paint flat and enamel . . . exterior paint lead and oil . . . wallpapered . . . Russell-Erwin hardware . . . Lightolier lighting fixtures . . . Standard plumbing fixtures . . . National steam heat with stoker . . . exterior doors weather-stripped.

HOUSES
by
COFFEY



Colonial Brick Veneer--Painted White

J. W. Coffey & Son, Contractors

T. W. Cooper, Architect

Residence of K. R. Smith

2921 White Oak Road

FOUNDATION, brick . . . basement floors, concrete . . . framing No. 1 N. C. yellow pine . . . millwork No. 1 N. C. yellow pine by Sanford Sash and Blind Co. . . common brick veneer, painted white . . . Medusa paint . . . Johns-Manville asbestos roof . . . Johns-Manville insulation . . . flooring, clear plain white oak . . . walls, plaster and knotty pine . . . tile bathroom floors and accessories . . . exterior paint, lead and oil . . . interior paint, Lowe Bros. interior paint . . . wallpaper . . . plumbing, Standard Sanitary and heating, concealed radiation with American boiler by Vickers & Ruth, Raleigh . . . Sandstone terrace floor . . . galvanized iron downspouts and gutters . . . Sargent hardware . . . electrical fixtures by Anderson Electric and Supply Co., Charlotte.

HOUSES
by
COFFEY

Tel. Raleigh 3918-R

Burke-Goldston Lumber Co.

HIGHWAY No. 1 — NEAR STATE HIGHWAY GARAGE

Rough and Finished Lumber

• •

WE DELIVER ORDERS FOR ONE OR MORE
TRUCK LOADS

• •

PURCHASES LESS THAN TRUCK LOADS
MUST BE CALLED FOR

Johns-Manville Building Material

ASBESTOS ROOFING

::

ASBESTOS SIDING

ASPHALT SHINGLES

▼ ▼

Rock Lath : Lime : Plaster : Cement : Nails

Mill Supplies - Machinery

▼ ▼

Dillon Supply Co.

RALEIGH

Durham

Rocky Mount



Cape Cod Colonial -- White Clapboards

J. W. Coffey & Son, Contractors

T. W. Cooper, Architect

Residence of C. F. Gaddy

Lassiter's Mill Road

B RICK FOUNDATION and basement walls . . . weather-boards . . . No. 1 N. C. pine framing and millwork . . . select red oak floors . . . Linoleum floors in kitchen and baths . . . asphalt composition roof . . . galvanized iron sheet metal work . . . sand-finished plaster on rocklath base . . . flat and enamel interior finish . . . lead and oil on exterior . . . wallpapered . . . National steam heat and Standard plumbing fixtures by Vickers & Ruth, Raleigh . . . Sargent hardware . . . lighting fixtures by Lightolier.

HOUSES
by
COFFEY



Colonial Wood Clapboard

J. W. Coffey & Son, Contractors

T. W. Cooper, Architect

Residence of Ned Ball

White Oak Road

COMMON BRICK FOUNDATION and terrace . . . No. 1 N. C. pine framing . . . No. 1 N. C. yellow pine millwork . . . composition roof . . . galvanized iron sheet metal work . . . Random width clear pine floor . . . Tiletex kitchen floor . . . tiled bath floors . . . white-finished plaster on rock lath base . . . exterior paint lead and oil . . . interior flat and enamel . . . wallpapered . . . Russwin hardware . . . National steam heat and Standard plumbing fixtures by Vickers & Ruth, Raleigh . . . lighting fixtures by Anderson Electric and Supply Co., Charlotte . . . exterior doors weather stripped.

HOUSES
by
COFFEY



Georgian Brick Veneer

J. W. Coffey & Son, Contractors

T. W. Cooper, Architect

Residence of J. M. Cutliff

1531 Caswell Street

CONCRETE FOUNDATION . . . brick basement and veneer walls in selected common brick . . . North Carolina pine framing and sheathing . . . Virginia pine millwork . . . Selected white oak floors . . . Dutch lap asbestos roof . . . galvanized iron sheet metal work . . . Fenestra steel casements . . . smooth plaster finish on rock lath base . . . tile bath floors and basement . . . Linoleum kitchen floors . . . interior paint flat and enamel . . . exterior lead and oil . . . wall-papered . . . Sargent hardware . . . lighting fixtures by Anderson Electric and Supply Co., Charlotte . . . National steam heat with stoker and Standard plumbing fixtures by Vickers & Ruth, Raleigh . . . Beaver Creek flagstone porch.

HOUSES
by
COFFEY



English--Brick Veneer

J. W. Coffey & Son, Contractors

T. W. Cooper, Architect

Residence of B. B. Fulton

600 Brooks Avenue

CONCRETE FOUNDATION . . . common brick veneer and foundation . . . No. 1 N. C. framing and sheathing . . . composition roof . . . Fenestra steel casements . . . sheet metal galvanized iron . . . millwork No. 1 N. C. yellow pine . . . select red oak floors . . . tile bath . . . linoleum kitchen floors . . . Standard plumbing by Vickers & Ruth, Raleigh . . . Lenox winter conditioned air heat . . . sand-finished plaster on rock lath base . . . painting, lead and oil and enamel . . . Pennvernion D. S. A. glass . . . exterior doors weather stripped . . . Sargent hardware . . . lighting fixtures, Anderson Electric and Supply Co., Charlotte.

HOUSES
by
COFFEY



Georgian--Brick Veneer Whitewashed

J. W. Coffey & Son, Contractors

W. H. Deitrick, Architect

Residence of Earl Johnson

1128 Harvey Street

CONCRETE FOUNDATION . . . common brick basement and veneer walls . . . No. 1 N. C. pine framing and mill-work . . . select white oak floors . . . tile baths . . . Linoleum in kitchen . . . asphalt composition roof . . . insulated . . . interior painting flat and enamel . . . wallpapered . . . exterior paint lead and oil . . . white-washed brickwork . . . smooth-finished plaster on rocklath base . . . American one-pipe vacuum heating system with concealed radiators and Standard plumbing fixtures by Vickers & Ruth, Raleigh . . . lighting fixtures by Anderson Electric and Supply Co., Charlotte . . . exterior doors weather stripped . . . Sargent hardware.

HOUSES
by
COFFEY

For your Floors, see

W. P. FINCH

• *Floors* •

PARQUET — BLOCK — BOARD FLOORING



409 East Lane St.

Phone 5075-W

RALEIGH, N. C.

M. L. MARTIN
CONCRETE

DRIVEWAYS :: SIDEWALKS :: FOUNDATIONS

:-- LET ME ESTIMATE --:



P. O. Box 1014

:

RALEIGH, N. C.



Stone Veneer Cottage

J. W. Coffey & Son, Contractors

Ross Shumaker, Architect

Residence of R. S. Fouraker

601 Brooks Avenue

CONCRETE and stone foundation . . . native Wake County stone veneer . . . No. 1 N. C. framing and sheathing . . . No. 1 N. C. yellow pine millwork . . . select red oak floors . . . composition roof . . . smooth plaster on rock lath base . . . galvanized iron sheet metal work . . . Standard plumbing fixtures and National steam heat by Vickers & Ruth, Raleigh . . . exterior painting, lead and oil . . . interior painting, flat and enamel . . . Sargent hardware . . . tile baths . . . exterior doors weather stripped.

HOUSES
by
COFFEY



Colonial Wood Clapboard--Painted White

J. W. Coffey & Son, Contractors

James A. Salter, Architect

H. T. Macon, Owner

2526 White Oak Road

CONCRETE FOUNDATION . . . common brick basement and house walls . . . brick chimneys . . . No. 1 N. C. pine framing and sheathing . . . No. 1 N. C. yellow pine millwork . . . composition roof with insulated back . . . galvanized iron sheet metal work . . . wide German siding . . . rock wool insulation . . . clear plain white oak floors . . . sand-finished plaster on rock lath base . . . Sargent hardware . . . lighting fixtures by Anderson Electric and Supply Co., Charlotte . . . Standard plumbing fixtures and American steam heat by Vickers & Ruth, Raleigh . . . exterior doors weather stripped . . . exterior paint lead and oil . . . interior paint flat and enamel . . . Linoleum kitchen floors . . . tile baths.

HOUSES
by
COFFEY



English Brick Veneer Cottage

J. W. Coffey & Son, Contractors

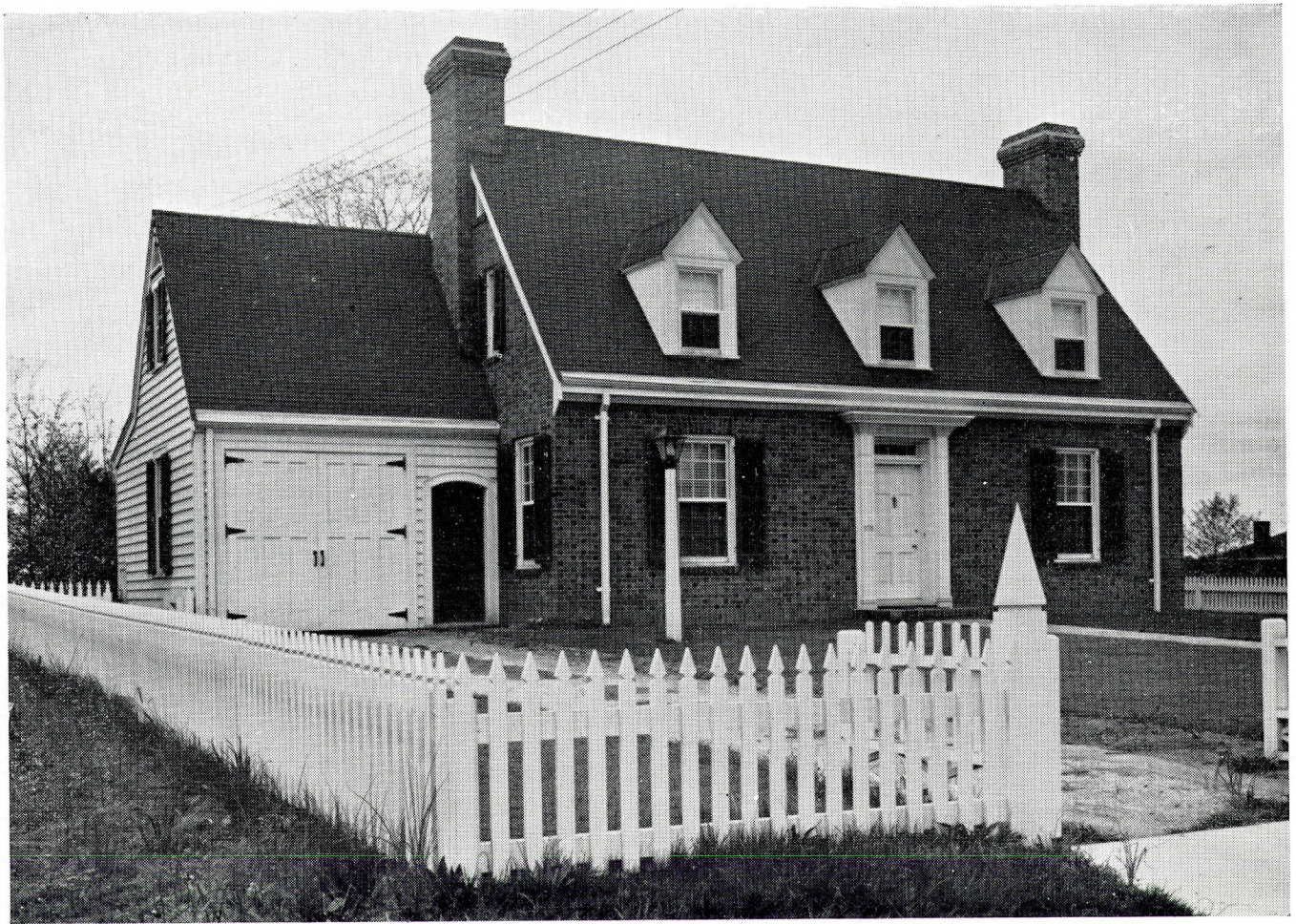
R. E. Ball, Engineer

Residence of A. D. Pollard

Cor. Byrd Street and Breeze Road, N. W.

CONCRETE FOUNDATION . . . common brick basement walls and veneer . . . No. 1 N. C. pine framing . . . No. 1 N. C. yellow pine millwork . . . select red oak floors . . . rock wool insulation . . . tiled baths . . . Linoleum kitchen floors . . . smooth-finished plaster on rock lath base . . . composition roof . . . galvanized iron sheet metal work . . . exterior paint lead and oil . . . interior flat and enamel . . . wallpapered . . . Sargent hardware . . . National steam heat and Standard plumbing fixtures by Vickers & Ruth, Raleigh . . . exterior doors weather stripped . . . electric fixtures by Anderson Electric and Supply Co., Charlotte.

HOUSES
by
COFFEY



Williamsburg Colonial--Brick Veneer

J. W. Coffey & Son, Contractors

T. W. Cooper, Architect

E. B. Morrow, Owner

Vanderbilt Street

CONCRETE FOUNDATION . . . common brick basement walls . . . selected sand faced over-sized common brick veneer . . . No. 1 N. C. pine framing and sheathing . . . No. 1 N. C. yellow pine millwork . . . clear plain white oak floors . . . tile baths . . . Linoleum kitchen . . . composition roof . . . galvanized iron sheet metal work . . . smooth-finished plaster and rock lath base . . . rock wool insulation . . . exterior paint lead and oil . . . interior flat and enamel . . . wallpaper by Askew . . . Sargent hardware . . . Standard plumbing fixtures by Vickers & Ruth, Raleigh . . . Chrysler Air-Temp. heat . . . weather strips . . . lighting fixtures by Anderson Electric and Supply Co., Charlotte.

HOUSES
by
COFFEY



Colonial-Asbestos Shingles

J. W. Coffey & Son, Contractors

T. W. Cooper, Architect

Charles Eastep, Owner

Canterbury Road

CONCRETE FOUNDATION . . . brick basement walls and chimney . . . N. C. pine framing and sheathing . . . asphalt composition roof . . . cedar-grained asbestos siding . . . galvanized iron sheet metal work . . . select red oak floors . . . No. 1 N. C. pine millwork . . . Linoleum baths and kitchen . . . smooth-finished plaster on rock lath base . . . Sargent hardware . . . lighting fixtures by Anderson Electric and Supply Co., Charlotte . . . Fox manually fired winter conditioned heat . . . Standard plumbing fixtures by Vickers & Ruth, Raleigh . . . exterior paint lead and oil . . . interior flat and enamel . . . partially wall papered . . . concrete terrace.

HOUSES
by
COFFEY



Colonial Brick Veneer-- Painted White

J. W. Coffey & Son, Contractors

T. W. Cooper, Architect

Residence of Roy W. Smith

Whitaker Drive

CONCRETE FOUNDATION . . . common brick basement and veneer walls . . . No. 1 N. C. pine framing and sheathing . . . No. 1 N. C. yellow pine millwork . . . composition roof . . . rock wool insulation . . . galvanized iron sheet metal work . . . select red oak floors . . . Linoleum kitchen and bath floors . . . smooth-finished plaster on rock lath base . . . exterior paint lead and oil . . . brick Bondex white interior flat and enamel . . . wallpapered . . . exterior doors weather stripped . . . Sargent hardware . . . lighting fixtures by Anderson Electric and Supply Co., Charlotte . . . Standard Oil winter air-conditioned heat . . . Standard plumbing fixtures by Vickers & Ruth, Raleigh.

HOUSES
by
COFFEY

♦ CAPITAL ♦
PRINTING
COMPANY
RALEIGH

