



MEMORIAL HOSPITAL OF WAKE COUNTY  
RALEIGH, NORTH CAROLINA  
WM. MOORE WEBER, A.I.A. J. N. PEASE & COMPANY  
RALEIGH, N.C. CHARLOTTE, N.C.  
ASSOCIATED  
ARCHITECTS & ENGINEERS





Project No. NC-308

Wake County Health Center

Raleigh, N.C.

50 % Complete

1. Wake County Health Center
2. County Health Center &  
County Health Office
3. Raleigh, N.C.
4. \$ 272, 912.00
5. July 1960
6. Architect

THIS PHOTOGRAPH, AS AN INSTRUMENT OF  
SERVICE, IS THE PROPERTY OF THE ARCHITECT,  
AND MAY NOT BE REPRODUCED WITHOUT HIS  
PERMISSION AND **UNLESS** THE REPRODUCTION  
CARRIES HIS NAME **AS** ARCHITECT.

WM. MOORE WEBER, Architect



Project No. NC-273

Nurses' Residence & School

Memorial Hospital of Wake County  
Raleigh, N.C.

THIS PHOTOGRAPH, AS AN INSTRUMENT OF  
SERVICE, IS THE PROPERTY OF THE ARCHITECT,  
AND MAY NOT BE REPRODUCED WITHOUT HIS  
PERMISSION AND UNLESS THE REPRODUCTION  
CARRIES HIS NAME AS ARCHITECT.

WM. MOORE WEBER, Architect

PHOTO BY  
LEWIS P. WATSON  
STUDIO 1916 ½ HILLSBORO ST.  
RALEIGH, N. C.



Memorial Hospital of Wake County  
Branch Hospital  
Greensboro, N.C.

THIS PHOTOGRAPH, AS AN INSTRUMENT OF  
SERVICE, IS THE PROPERTY OF THE ARCHITECT,  
AND MAY NOT BE REPRODUCED WITHOUT HIS  
PERMISSION AND UNLESS THE REPRODUCTION  
CARRIES HIS NAME AS ARCHITECT.

WM. MOORE WEBER, Architect

4

5 wide  
4 deep

657

STEARNS

WIDE 5" SCREEN 102

SQUARE HIGH

COMBINATION OUTLINED

ZINC-REG. COPPER

MOUNT PICA

BEARERS-YES MAGNESIUM

BEVEL-YES UNMOUNT

COPIES ON JOB NO

PLATES ON JOB NO

WANTED





MEMORIAL HOSPITAL OF ALAMANCE COUNTY  
BURLINGTON NORTH CAROLINA  
WM. MOORE WEBER, Architect

THIS PHOTOGRAPH, AS AN INSTRUMENT OF  
SERVICE, IS THE PROPERTY OF THE ARCHITECT,  
AND MAY NOT BE REPRODUCED WITHOUT HIS  
PERMISSION AND UNLESS THE REPRODUCTION  
CARRIES HIS NAME AS ARCHITECT.

WM. MOORE WEBER, Architect





Memorial Hospital  
of Alamance County, Inc.  
Burlington, N. C.

Crop to make 5 5/8 off top  
Reduction

933

Brass Top & 2 Sides

Reduce 8 3/4





W. M. Tammany, Del.  
1958

Project No NC-316  
Memorial Hospital of Alamance Co., Inc.  
Burlington, N.C.  
(Original Study)

THIS PHOTOGRAPH, AS AN INSTRUMENT OF  
SERVICE, IS THE PROPERTY OF THE ARCHITECT,  
AND MAY NOT BE REPRODUCED WITHOUT HIS  
PERMISSION AND UNLESS THE REPRODUCTION  
CARRIES HIS NAME AS ARCHITECT.

WM. MOORE WEBER, Architect

133881

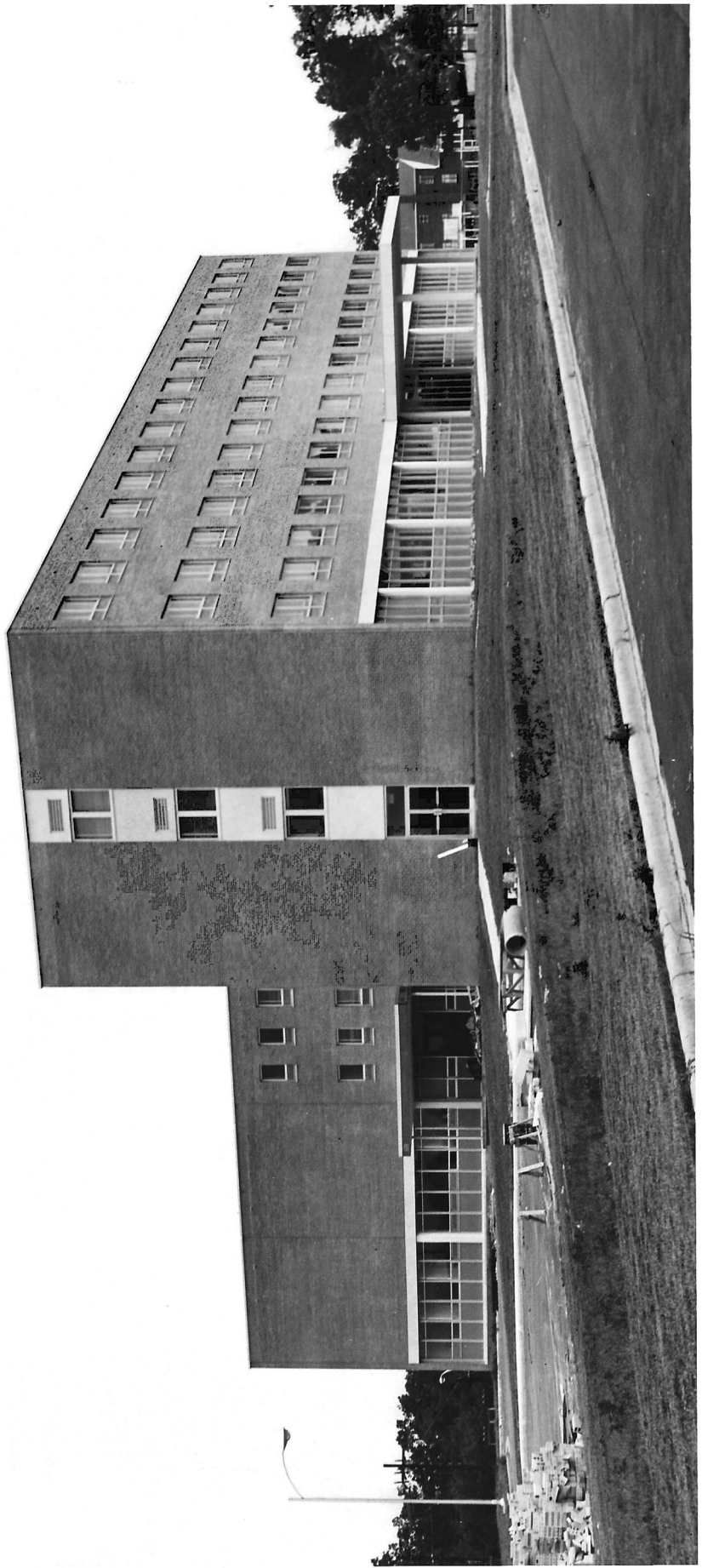


*Memorial Hospital of  
Alamance County, Inc.  
Burlington, N. C.*

THIS PHOTOGRAPH, AS AN INSTRUMENT OF  
SERVICE, IS THE PROPERTY OF THE ARCHITECT,  
AND MAY NOT BE REPRODUCED WITHOUT HIS  
PERMISSION AND UNLESS THE REPRODUCTION  
CARRIES HIS NAME AS ARCHITECT.

WM. MOORE WEBER, Architect







Memorial Hospital of  
Alamance County, N.C.  
Burlington, N.C.

THIS PHOTOGRAPH, AS AN INSTRUMENT OF  
SERVICE, IS THE PROPERTY OF THE ARCHITECT,  
AND MAY NOT BE REPRODUCED WITHOUT HIS  
PERMISSION AND UNLESS THE REPRODUCTION  
CARRIES HIS NAME AS ARCHITECT.

WM. MOORE WEBER, Architect



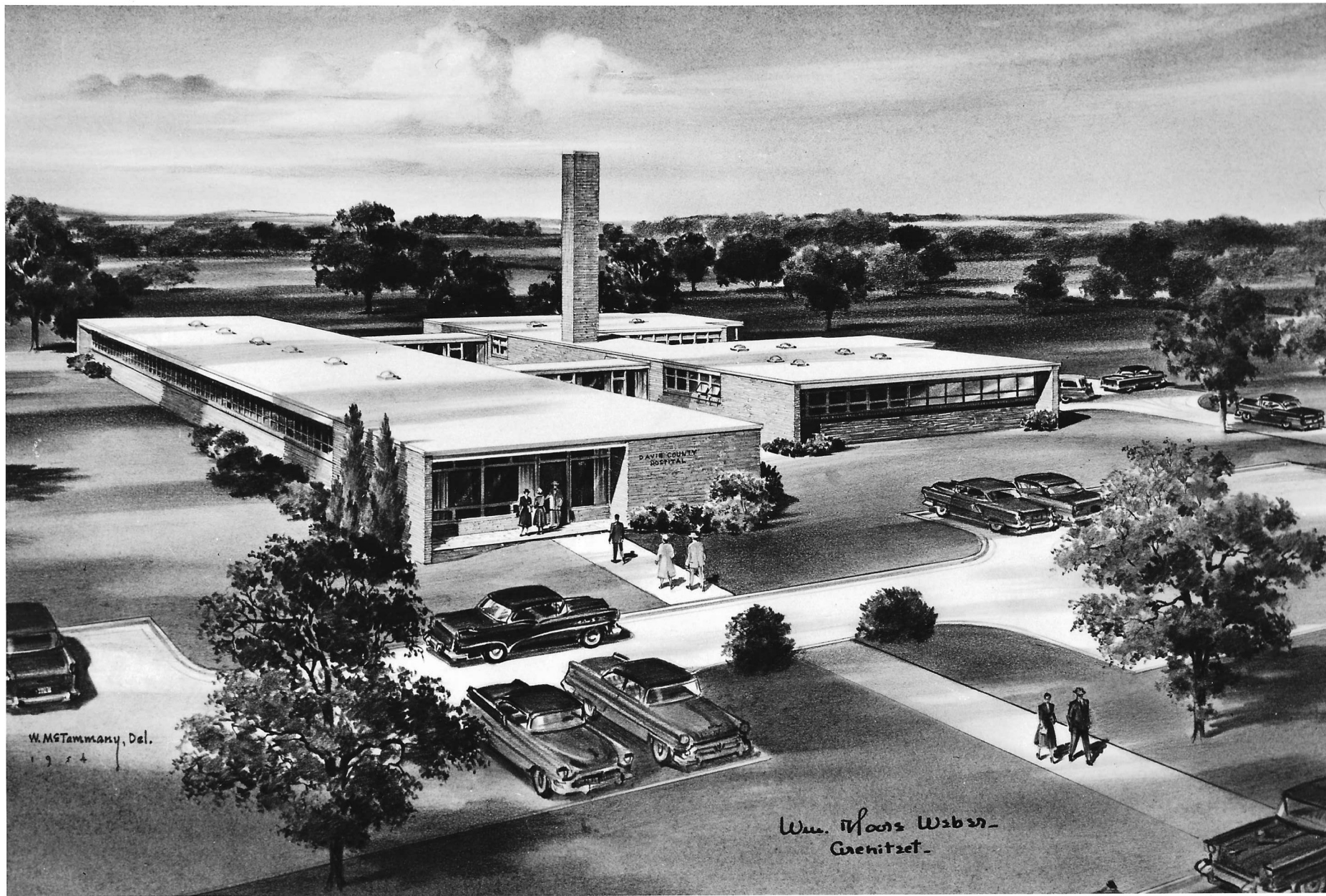
Project No. NC-316  
Memorial Hospital of  
Alamance County, Inc.  
Burlington, N.C.  
100% Complete

March 15, 1962

THIS PHOTOGRAPH, AS AN INSTRUMENT OF  
SERVICE, IS THE PROPERTY OF THE ARCHITECT,  
AND MAY NOT BE REPRODUCED WITHOUT HIS  
PERMISSION AND UNLESS THE REPRODUCTION  
CARRIES HIS NAME AS ARCHITECT.

WM. MOORE WEBER, Architect

16781



W. M. Tammany, Del.  
1934

Wm. H. W. W. W. W.  
Greenitzet.

Project No. MC-189  
Daviess County Hospital  
Mocksville, N.C.

THIS PHOTOGRAPH, AS AN INSTRUMENT OF  
SERVICE, IS THE PROPERTY OF THE ARCHITECT,  
AND MAY NOT BE REPRODUCED WITHOUT HIS  
PERMISSION AND UNLESS THE REPRODUCTION  
CARRIES HIS NAME AS ARCHITECT.

WM. MOORE WEBER, Architect





Davie Co. Hospital  
Mocksville, N.C.

**WM. MOORE WEBER**  
**ARCHITECT**  
**RALEIGH, NORTH CAROLINA**





Memorial Hospital of Wake County  
Branch Hospital  
Ferguson, N. C.

Rendering showing  
Future Nursing Wing

THIS PHOTOGRAPH, AS AN INSTRUMENT OF  
SERVICE, IS THE PROPERTY OF THE ARCHITECT,  
AND MAY NOT BE REPRODUCED WITHOUT HIS  
PERMISSION AND UNLESS THE REPRODUCTION  
CARRIES HIS NAME AS ARCHITECT.

WM. MOORE WEBER, Architect

PHOTO 21  
LEWIS P. WATSON  
STUDIO 1916 1/2 HILLSBORO ST.  
RALEIGH, N. C.

PHOTO 21



Project No. NC-261  
Additions to  
Johnston Memorial Hospital  
Smithfield, N.C.

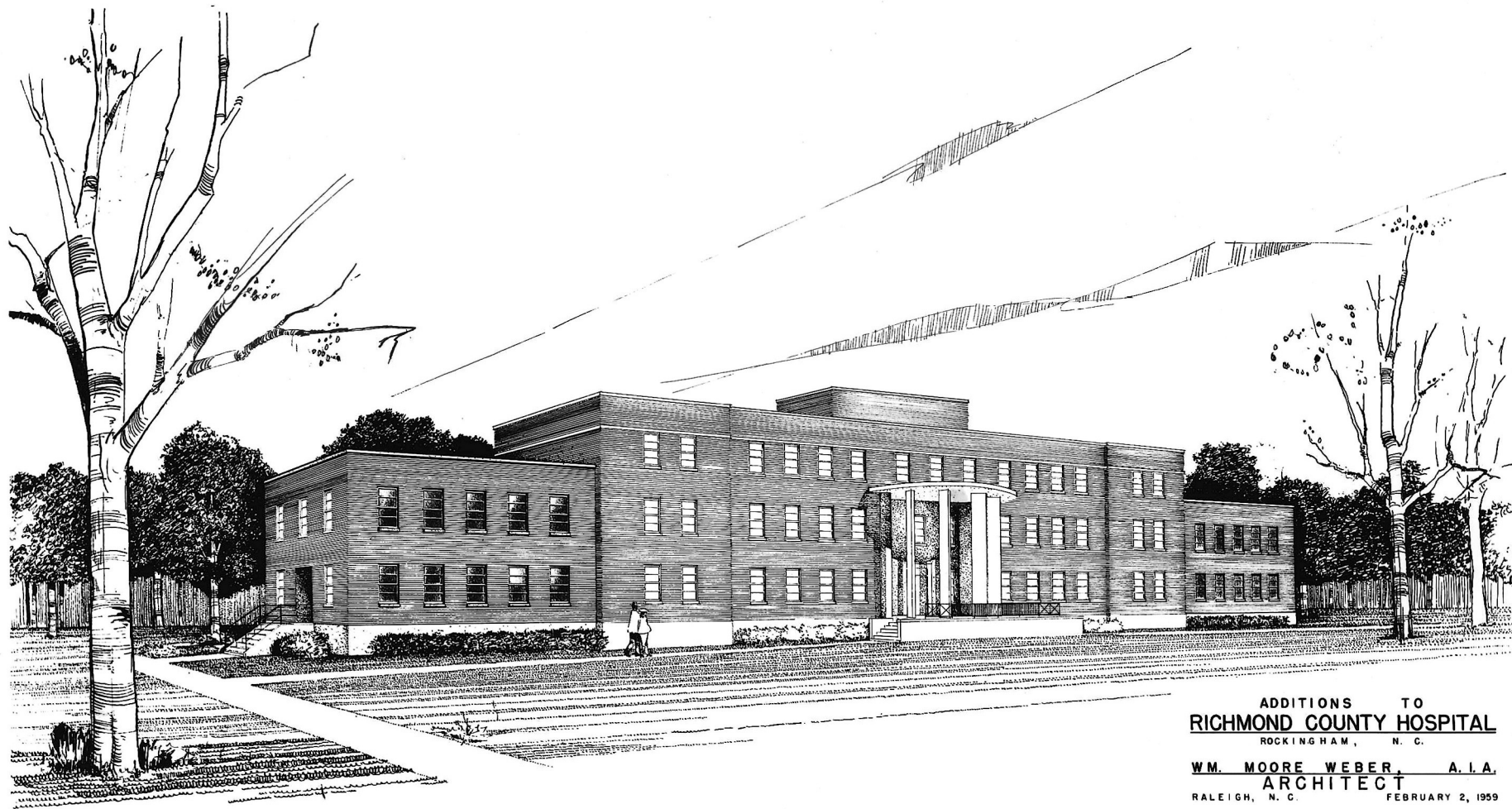
100 % complete

March 10, 1958

**WM. MOORE WEBER**  
**ARCHITECT**  
RALEIGH, NORTH CAROLINA

THIS PHOTOGRAPH, AS AN INSTRUMENT OF  
SERVICE, IS THE PROPERTY OF THE ARCHITECT,  
AND MAY NOT BE REPRODUCED WITHOUT HIS  
PERMISSION AND UNLESS THE REPRODUCTION  
CARRIES HIS NAME AS ARCHITECT.

WM. MOORE WEBER, Architect



ADDITIONS TO  
**RICHMOND COUNTY HOSPITAL**  
ROCKINGHAM, N. C.

**WM. MOORE WEBER, A.I.A.**  
**ARCHITECT**  
RALEIGH, N. C.

FEBRUARY 2, 1959

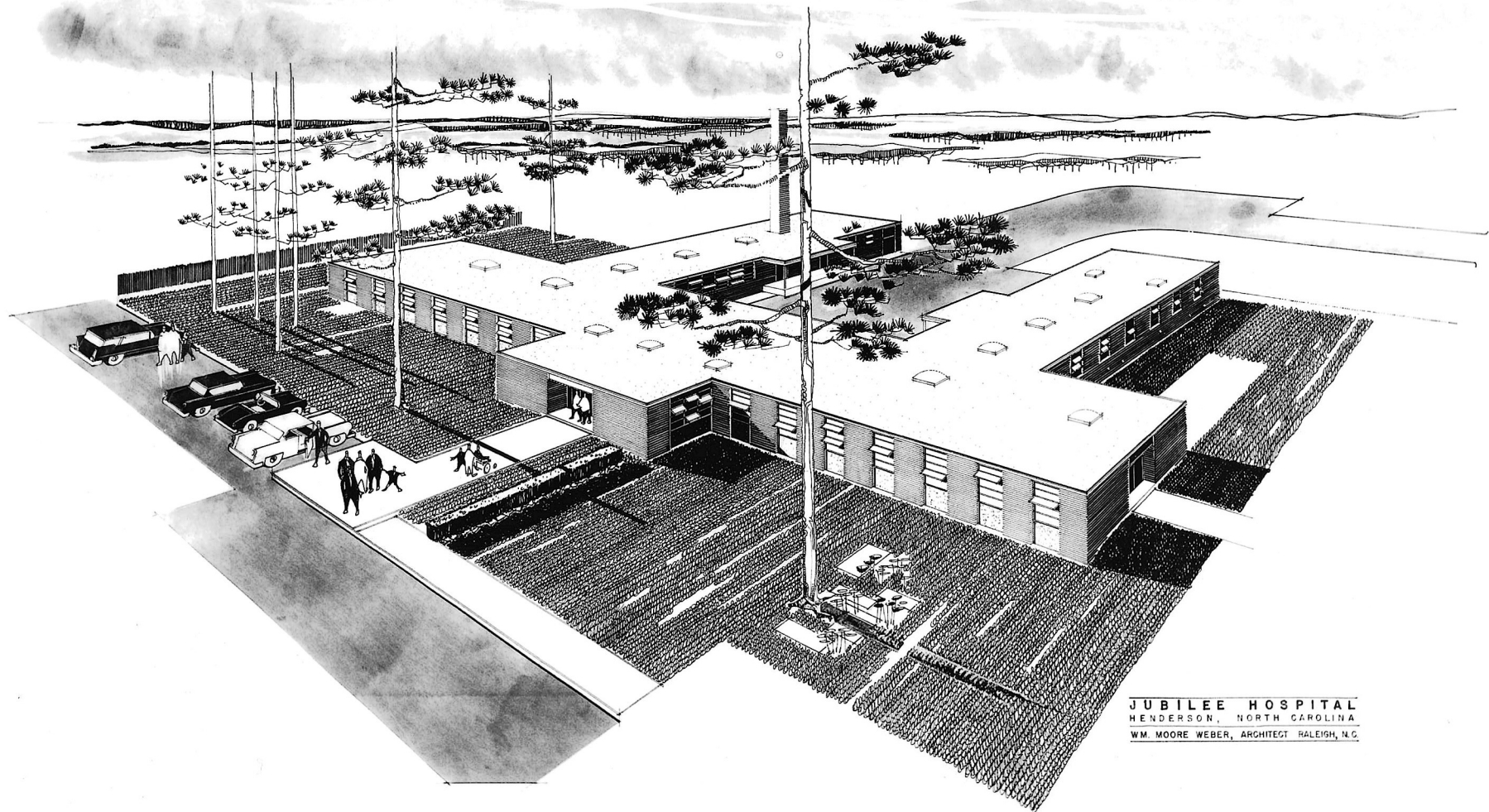
THIS PHOTOGRAPH, AS AN INSTRUMENT OF  
SERVICE, IS THE PROPERTY OF THE ARCHITECT,  
AND MAY NOT BE REPRODUCED WITHOUT HIS  
PERMISSION AND UNLESS THE REPRODUCTION  
CARRIES HIS NAME AS ARCHITECT.

WM. MOORE WEBER, Architect

*Richmond County Mem. Hosp., Inc.  
Rockingham, N. C.*

PHOTO BY  
LEWIS P. WATSON  
STUDIO 1916 ½ HILLSBORO ST.  
RALEIGH, N. C.





JUBILEE HOSPITAL  
HENDERSON, NORTH CAROLINA  
WM. MOORE WEBER, ARCHITECT RALEIGH, N.C.



THIS PHOTOGRAPH, AS AN INSTRUMENT OF  
SERVICE, IS THE PROPERTY OF THE ARCHITECT,  
AND MAY NOT BE REPRODUCED WITHOUT HIS  
PERMISSION AND UNLESS THE REPRODUCTION  
CARRIES HIS NAME AS ARCHITECT.

WM. MOORE WEBER, Architect

PHOTO BY  
LEWIS D. WATSON  
STUDIO 1111 N. HILLSBORO ST.  
RA. COH. N. C.

13238





THIS PHOTOGRAPH, AS AN INSTRUMENT OF  
SERVICE, IS THE PROPERTY OF THE ARCHITECT,  
AND MAY NOT BE REPRODUCED WITHOUT HIS  
PERMISSION AND UNLESS THE REPRODUCTION  
CARRIES HIS NAME AS ARCHITECT.

WM. MOORE WEBER, Architect











THIS PHOTOGRAPH, AS AN INSTRUMENT OF  
SERVICE, IS THE PROPERTY OF THE ARCHITECT,  
AND MAY NOT BE REPRODUCED WITHOUT HIS  
PERMISSION AND UNLESS THE REPRODUCTION  
CARRIES HIS NAME AS ARCHITECT.

WM. MOORE WEBER, Architect



WM. MOORE WEBER  
ARCHITECT  
RALEIGH, NORTH CAROLINA

45

327  
5  
110



Project No. NC-201  
Haywood County Health Center  
Waynesville North Carolina  
100% Complete  
July 1955

THIS PHOTOGRAPH, AS AN INSTRUMENT OF  
SERVICE, IS THE PROPERTY OF THE ARCHITECT,  
AND MAY NOT BE REPRODUCED WITHOUT HIS  
PERMISSION AND UNLESS THE REPRODUCTION  
CARRIES HIS NAME AS ARCHITECT.

WM. MOORE WEBER, Architect





WM. MOORE WEBER  
ARCHITECT  
RALEIGH, NORTH CAROLINA

44

327  
5/  
011

2117



THIS PHOTOGRAPH, AS AN INSTRUMENT OF  
SERVICE, IS THE PROPERTY OF THE ARCHITECT,  
AND MAY NOT BE REPRODUCED WITHOUT HIS  
PERMISSION AND UNLESS THE REPRODUCTION  
CARRIES HIS NAME AS ARCHITECT.

WM. MOORE WEBER, Architect

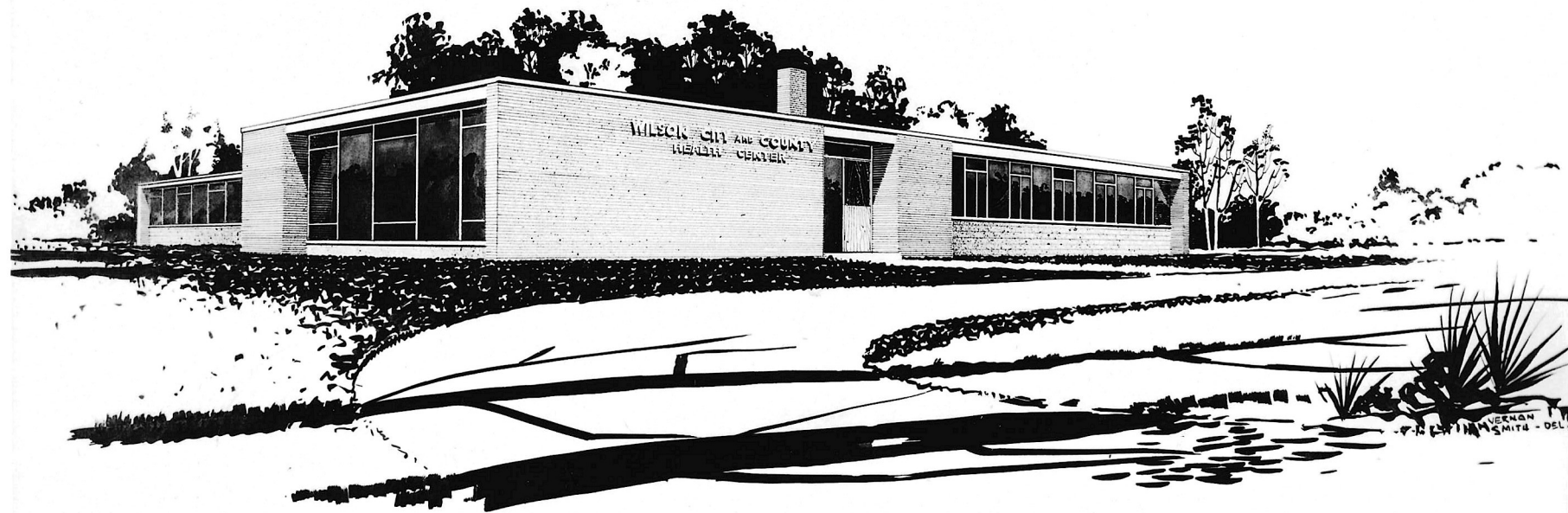


PHOTO BY  
**LEWIS F. WATSON**  
STUDIO 1916 1/2 HILLSBORO ST.  
RALEIGH, N. C.

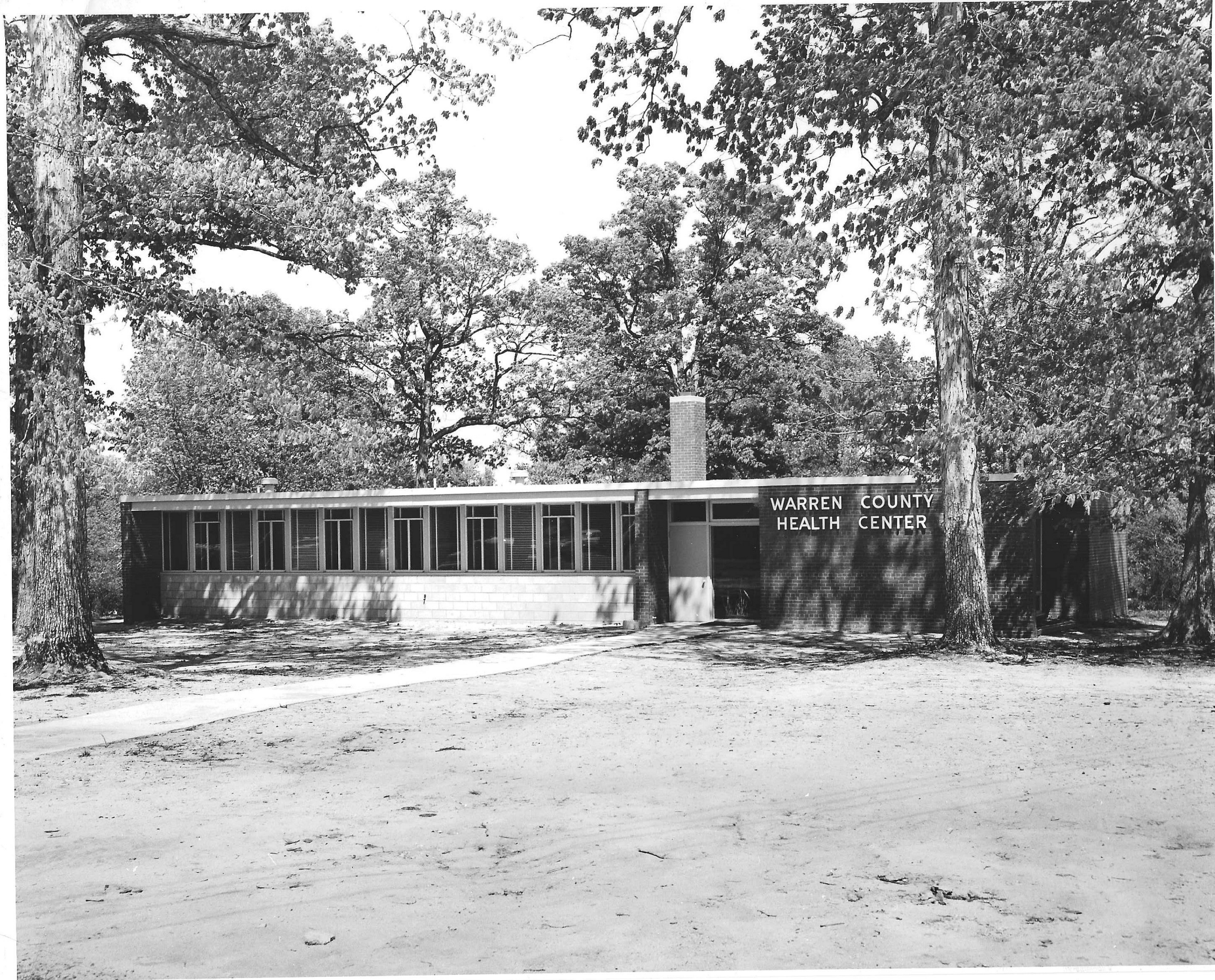
**WILLIAM MOORE WEBER**  
**ARCHITECT - RALEIGH, N. C.**





THIS PHOTOGRAPH, AS AN INSTRUMENT OF  
SERVICE, IS THE PROPERTY OF THE ARCHITECT,  
AND MAY NOT BE REPRODUCED WITHOUT HIS  
PERMISSION AND UNLESS THE REPRODUCTION  
CARRIES HIS NAME AS ARCHITECT.

WM. MOORE WEBER, Architect



WM. MOORE WEBER  
ARCHITECT  
RALEIGH, NORTH CAROLINA

# 133

2447

50

327/5/10





Project No. MC-205  
Stokes County Health Center  
Wanbury, North Carolina  
100 % Complete

THIS PHOTOGRAPH, AS AN INSTRUMENT OF  
SERVICE, IS THE PROPERTY OF THE ARCHITECT,  
AND MAY NOT BE REPRODUCED WITHOUT HIS  
PERMISSION AND UNLESS THE REPRODUCTION  
CARRIES HIS NAME AS ARCHITECT.

WM. MOORE WEBER, Architect

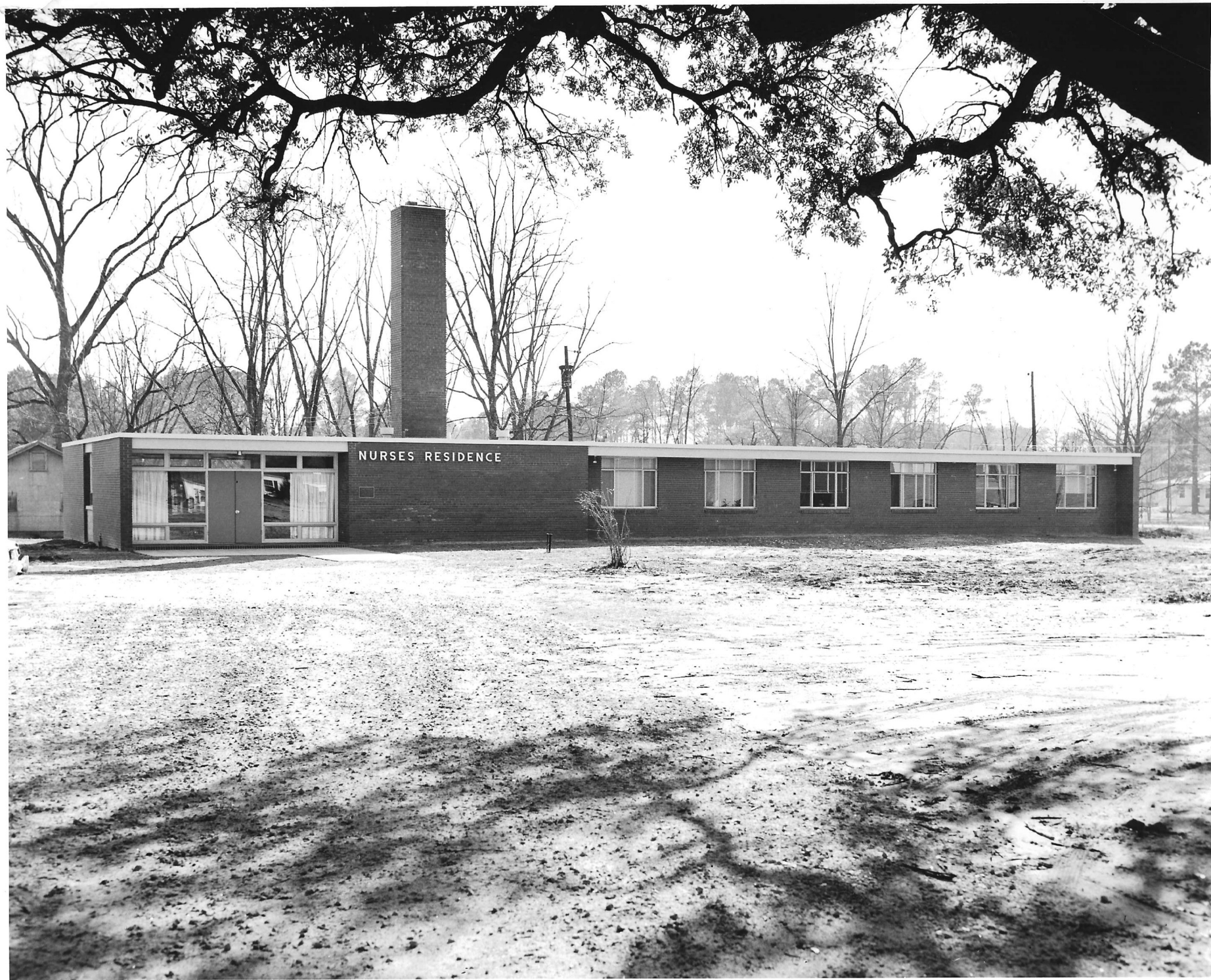
**WILLIAM MOORE WEBER**  
**ARCHITECT** • RALEIGH, N. C.











Nurses' Residence  
Columbiana County Hospital  
Whiteville, N.C.

THIS PHOTOGRAPH, AS AN INSTRUMENT OF  
SERVICE, IS THE PROPERTY OF THE ARCHITECT,  
AND MAY NOT BE REPRODUCED WITHOUT HIS  
PERMISSION AND UNLESS THE REPRODUCTION  
CARRIES HIS NAME AS ARCHITECT.

WM. MOORE WEBER, Architect



**WM. MOORE WEBER**  
**ARCHITECT**  
**RALEIGH, NORTH CAROLINA**

*Ashe County Nurses Residence  
Jefferson, North Carolina*